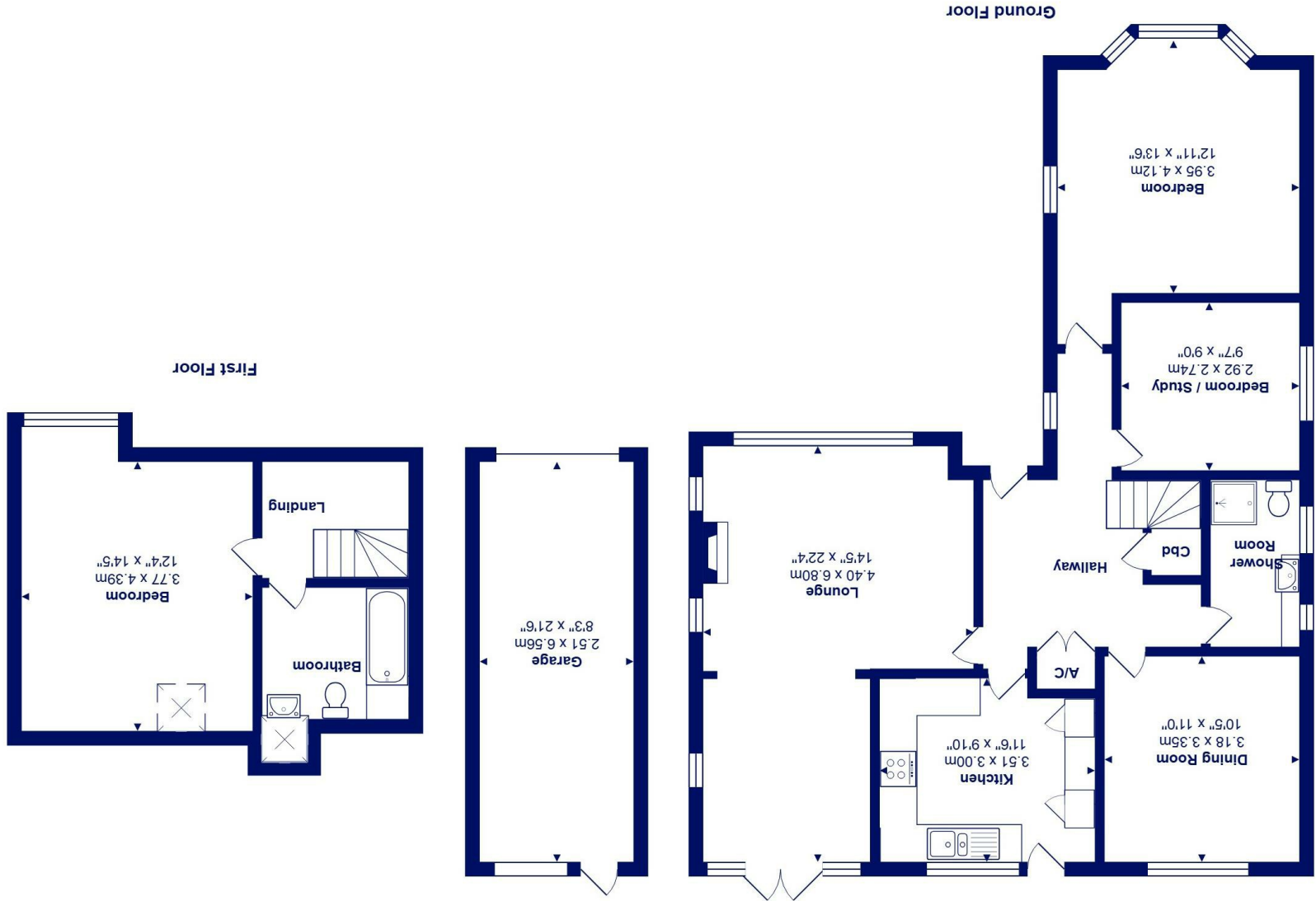




Total Area: 118.9 m<sup>2</sup> ... 1279 ft<sup>2</sup> (excluding garage)  
All measurements are approximate and for display purposes only



4 Rossley Close, Highcliffe on Sea, BH23 4RR £625,000

**Mitchells**  
1963 — TODAY

A superb detached, 'Stanley' built chalet situated in a lovely quiet location with a sunny west facing garden. The property is in immaculate condition having been extremely well cared for over the years and was converted properly by a well renowned, established local builder now offering a spacious first floor bedroom and bathroom.

The property has the majority of it's accommodation on the ground floor with just the bedroom/en-suite upstairs making it equally suitable for retirement/family living. The location is excellent as Rossley Close is a no through road- it is also within the catchment area for both Primary and Comprehensive schools and just a short stroll to Hinton Admiral Railway Station.

- Attractive detached chalet bungalow with about 1280 sq ft of living space, plus garaging
- Three ground floor bedrooms and a family shower room
- Delightful, through sitting/dining room with pretty outlook over both the front and rear gardens
- Professionally converted loft space now giving a spacious double bedroom and adjacent bathroom, still with eaves storage
- Well fitted kitchen with potential to 'knock through' to the dining room/extend to the rear (stpp)
- Mature rear gardens, detached garage and private driveway
- Highly sought after location and in a road where many of the original bungalows have been significantly improved/extended
- A really lovely home in a super setting- immaculate but still offering potential for the future

EPC Rating Band: D  
Council Tax Band: E  
Freehold

Successful buyers will be required to complete online identity checks provided by Lifetime Legal. The cost of these checks is £49 inc. VAT per purchase which is paid in advance, directly to Lifetime Legal. This check verifies your identity in line with our obligations as stipulated by our regulatory body, HMRC

