



*10 Plover Drive, Milford on Sea, SO41 0XF*

*Offers Over £650,000*

**Mitchells**  
1963 — TODAY



*10 Plover Drive  
Milford on Sea  
Lymington  
Hampshire  
SO41 0XF*

A superbly presented four bedroom detached family house situated in a popular location within the sought after village of Milford on Sea. The village green, the beach, which is a popular kite surfing location, and Sturt Pond are all within easy walking distance. Other features include a large kitchen/dining room, private gardens, an en-suite shower room to the master bedroom, a ground floor cloakroom, and a garage with additional off road parking. An internal viewing is strongly recommended.

- Porch & Entrance Hall
- Sitting Room
- Kitchen/Dining Room
- Cloakroom
- First Floor Landing
- Four Bedrooms
- Family Bathroom
- En-Suite Room
- Garage & Off Road Parking
- Private Gardens



## The Property

Porch with a UPVC double glazed front door.

Entrance hall with attractive timber flooring, stairs to the first floor, and an understairs storage cupboard.

Lovely sitting room featuring a fireplace with a stone backing and hearth, and an inset living flame gas fire.

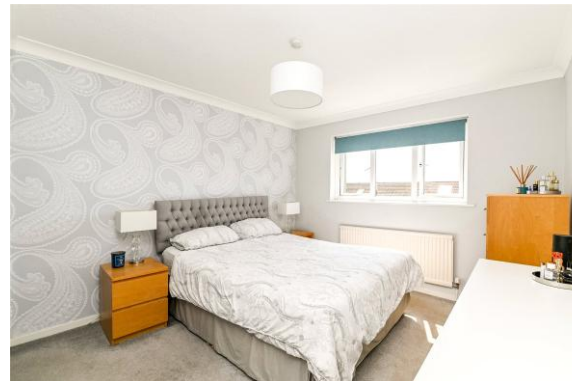
Large kitchen/dining room with the kitchen area offering a good range of cream wall and base units, a contrasting timber worktop, an inset one and a half bowl sink unit with a mixer tap, recessed ceiling spotlights, wall tiling, and a wall mounted Worcester gas fired boiler installed in 2026 and concealed in a cupboard. Twin UPVC double glazed casement doors open onto the patio and rear garden, with ample room for a dining table. Integrated appliances include a double electric oven, a four burner gas hob, and an extractor. There is space for a washing machine, a dishwasher, and a fridge.

Ground floor cloakroom with fully tiled walls and flooring, fitted with a modern white suite.

First floor landing with an airing cupboard and a trap to the roof space.

Four good sized bedrooms, the master bedroom benefiting from a built-in wardrobe and a fully tiled en-suite shower room fitted with a modern white suite.

Family bathroom fitted with a modern white suite comprising a panel bath with an independent shower over, a wash basin, a WC, timber effect flooring, a chrome ladder style heated towel rail, and fully tiled walls.





## *Gardens & Grounds*

The front garden is laid mainly to hardstanding and decorative stone, providing excellent off road parking.

A driveway extends along the side of the property and leads to the single garage, which has an up and over door, power, and light.

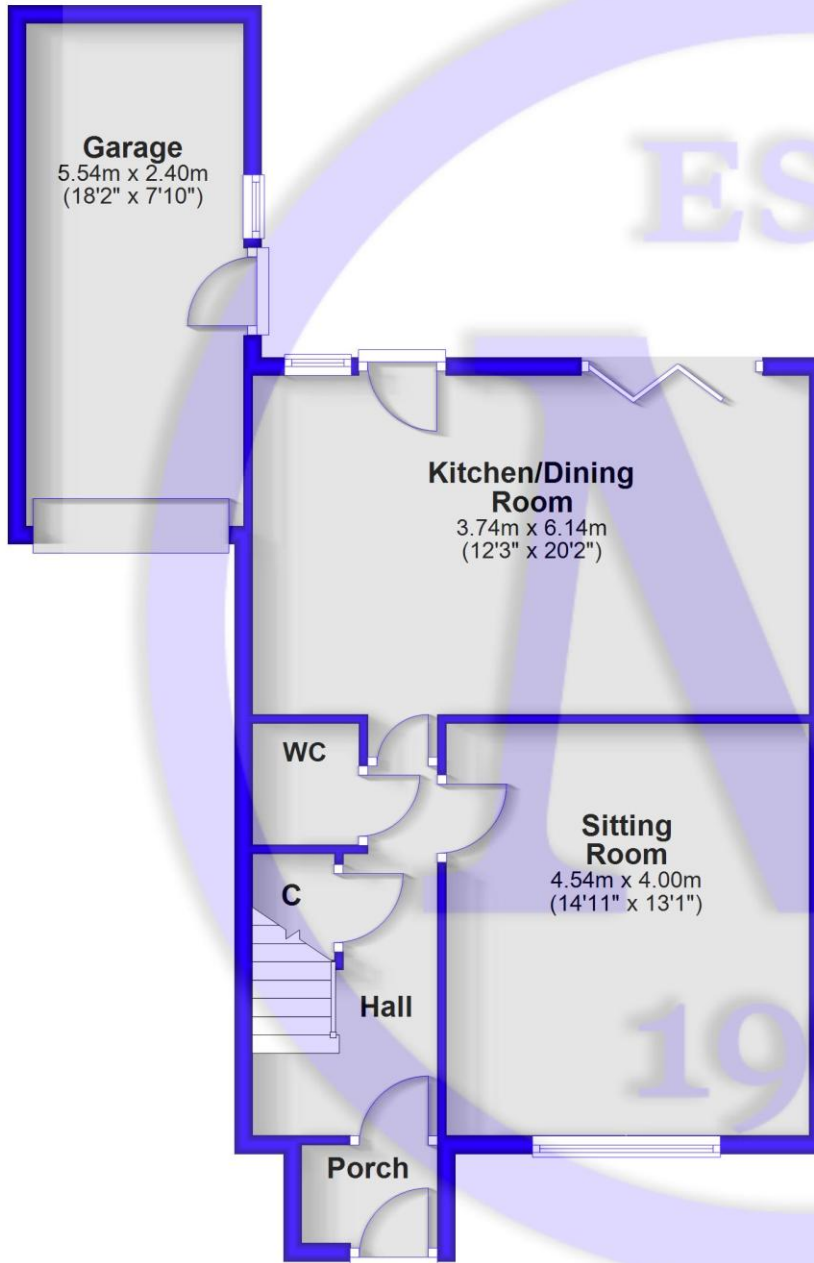
The rear garden features a large textured paved patio, with the remainder laid mainly to artificial lawn and colourful flower and shrub borders, all enjoying a good degree of privacy.

## *Services*

- Mains gas, electricity, drainage and water
- Council Tax Band: E
- Energy Performance Rating: D

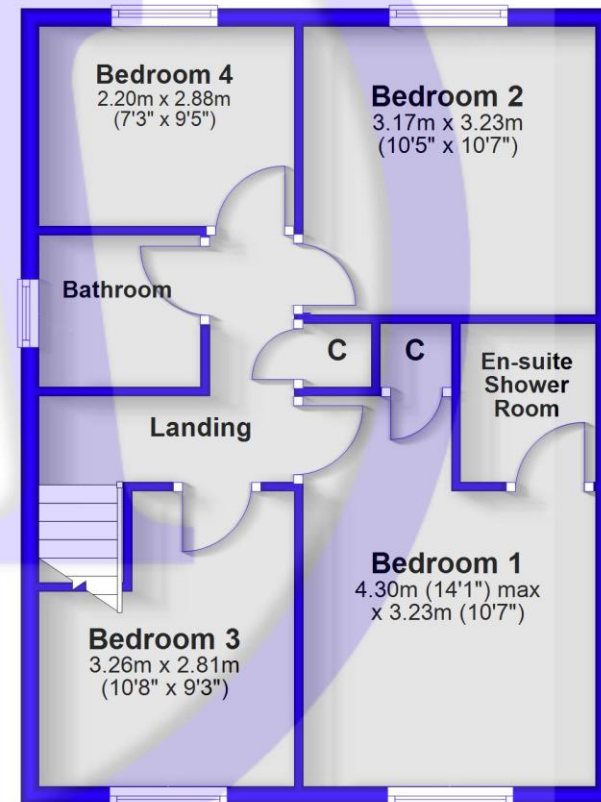
## Ground Floor

Approx. 66.7 sq. metres (718.1 sq. feet)



## First Floor

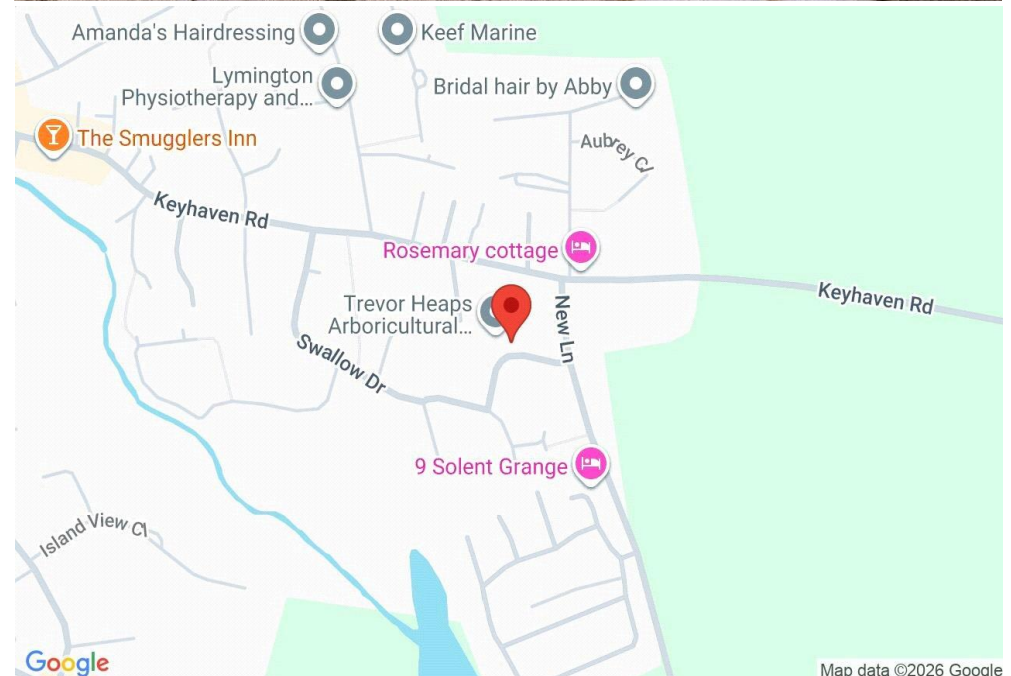
Approx. 53.1 sq. metres (571.9 sq. feet)



Total area: approx. 119.8 sq. metres (1290.0 sq. feet)

## Situation

Milford on Sea is a thriving coastal village located between Barton on Sea and the Georgian market town of Lymington. It offers a range of amenities, including top-tier restaurants, three pubs, a superb tennis and squash club, and an attractive village green. With its picturesque coastal setting, lovely beaches, proximity to the New Forest National Park, and the nearby Keyhaven Sailing Club, Milford on Sea is one of the most desirable locations on the south coast.





[Mitchells.uk.com](http://Mitchells.uk.com)  
[info@mitchells.uk.com](mailto:info@mitchells.uk.com)  
01425 616411

Centenary Buildings  
8-10 Old Milton Road  
New Milton  
Hampshire  
BH25 6DT

**Mitchells**  
1963 — TODAY

