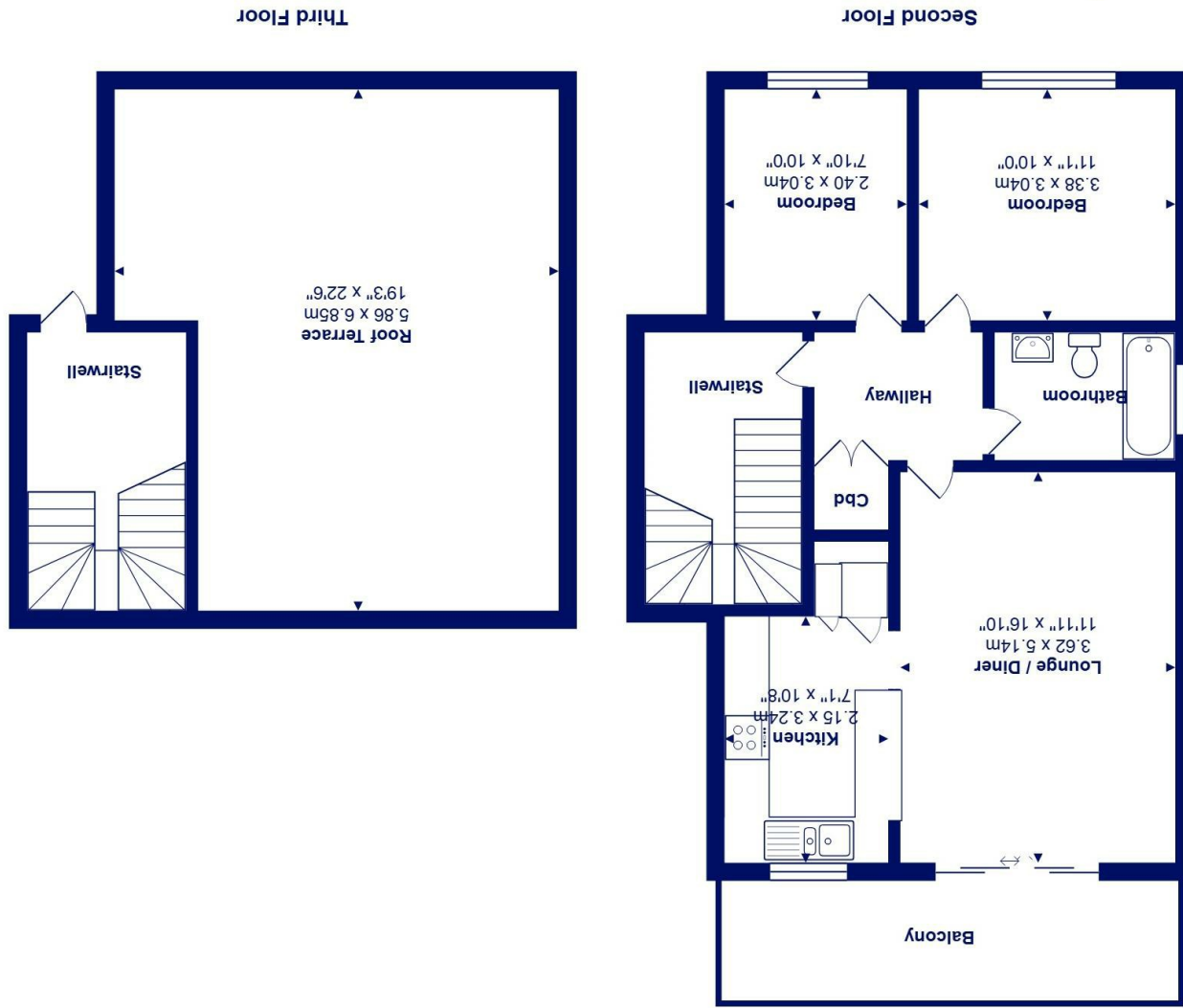




Total Area: 101.2 m<sup>2</sup> ... 1089 ft<sup>2</sup> (including balcony and roof terrace but excluding stairwell)  
All measurements are approximate and for display purposes only



*24 Waterside, Mudeford, BH23 3NZ* *£695,000*

**Mitchells**  
1963 — TODAY

THE MOST AMAZING VIEWS IN MUDEFORD. There are only a few harbourside properties that enjoy such truly spectacular, panoramic sea and harbour views and this is one of them! A beautifully presented top floor apartment with both south facing balcony and large roof terrace right on the harbour's edge and with use of private slipway and boat park.

Situated on this small, select development in Waterside, with communal lawns extending right to the water's edge, in the heart of Mudeford. An unrivalled location! The luxurious Christchurch Harbour Hotel and Jetty Restaurant are just a short stroll away, with local shops, Mudeford Quay and Avon Beach just a little further on.

- Breathtaking views over the harbour, across Mudeford Quay and Christchurch Bay to the Isle of Wight
- Ideal for water sports enthusiasts with use of private boat park and slipway
- Covered parking for two vehicles and storage for "toys"
- Amazing large (approaching 400 sq ft) roof terrace, ideal for alfresco entertaining
- Surperbly presented and modernised with a cool contemporary and stylish finish
- High quality bathroom and kitchen fitments
- UPVC double glazing and gas central heating
- Lease extends for a further 134 years from 2026
- Maintenance charge for communal area and property £2500 pa.
- NO FORWARD CHAIN

EPC Rating Band: D  
Council Tax Band: E  
Leasehold

Successful buyers will be required to complete online identity checks provided by Lifetime Legal. The cost of these checks is £49 inc. VAT per purchase which is paid in advance, directly to Lifetime Legal. This check verifies your identity in line with our obligations as stipulated by our regulatory body, HMRC

