



9, Clifftop View, Hoburne Naish Holiday Park,

£250,000

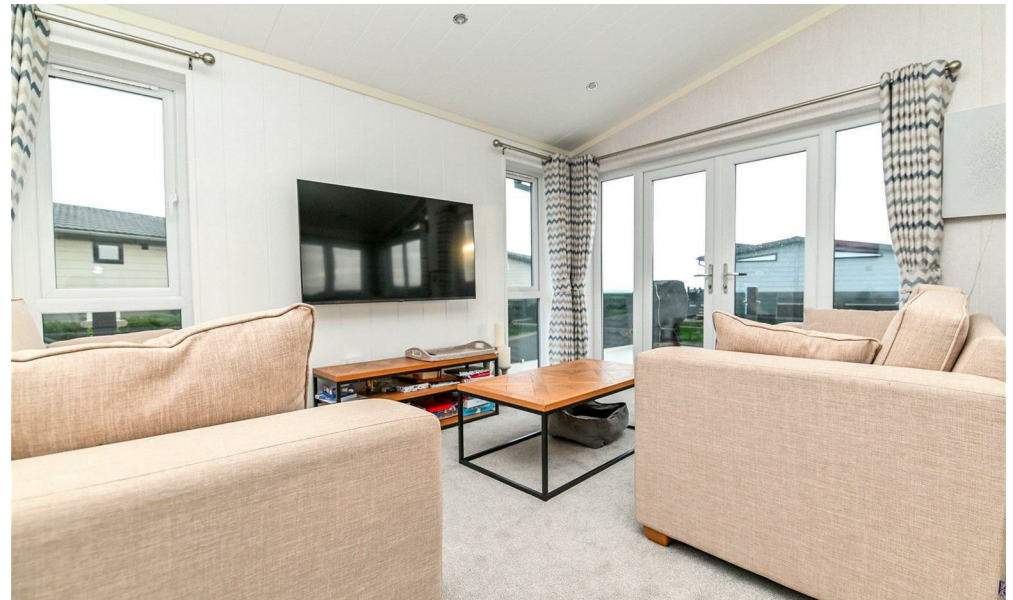
**Mitchells**  
1963 — TODAY



*9 Clifftop View  
Hoburne Naish Holiday  
Park  
Barton On Sea  
Hampshire  
BH25 7RE*

A truly impressive three bedroom, two bathroom holiday home situated in a brilliant location on the popular Hoburne Naish Holiday Park. The property has been immaculately kept by the current owners and features a large open plan kitchen/living room, three spacious bedrooms, with the master bedroom benefiting from an en-suite shower room and dressing area, a modern family bathroom, beautiful sea views, a large south-facing decking area, allocated parking spaces, and it is offered with a long remaining license.

- 2022 Omar Alderney 42x20
- 2026 Site Fees: £13,936.59
- 2026 Rates: £700.31
- License Ends: 30/11/2048
- Second Home Only
- Cannot Be A Main Residence
- Open Plan Kitchen/Living Room
- Three Bedrooms
- Modern Family Bathroom
- En-Suite Shower Room



## The Property

Entrance into the impressive open plan kitchen/living room, featuring a triple aspect, with the sitting room enjoying double casement doors opening onto the decking. The dining area benefits from beautiful sea views. The kitchen has timber effect flooring, shaker style wall and base units with a contrasting timber effect worktop, an island providing additional storage and extra worktop space, and integrated appliances including an eye level electric oven, a five burner gas hob with an extractor fan over, a one and a half bowl ceramic sink unit, a tall stand up fridge/freezer, a slimline dishwasher, and a washing machine.

Hallway with an additional storage cupboard.

Bedroom one is a generous king size room with matching fitted furniture, leading through to a dressing area with a dressing table and fitted double wardrobe. A door then leads to the modern ensuite shower room with timber effect flooring and a modern suite comprising a large walk-in shower cubicle with a waterfall shower attachment and a glass sliding door, a chrome ladder style heated towel rail, a UPVC double glazed window, an extractor fan, a WC, and a wash hand basin with a mixer tap and drainer.

Bedrooms two and three are both situated on the side of the property, each with fitted wardrobes. Bedroom two is a double bedroom, while bedroom three is currently laid out as a twin.

Family bathroom with timber effect flooring, part tiled walls, a UPVC double glazed window, an extractor fan, and a modern suite comprising a panel bath with a handheld shower attachment and a glass shower screen, a chrome towel rail, a wash hand basin with a mixer tap and storage beneath, and a WC.





## *Gardens & Grounds*

9 Clifftop View is situated at the end of a cul de sac in the prestigious Clifftop View development at Hoburne Naish. The holiday home enjoys beautiful sea views, a larger than average area of decking, two allocated parking spaces, and is within a level walk of all the facilities at Hoburne Naish.

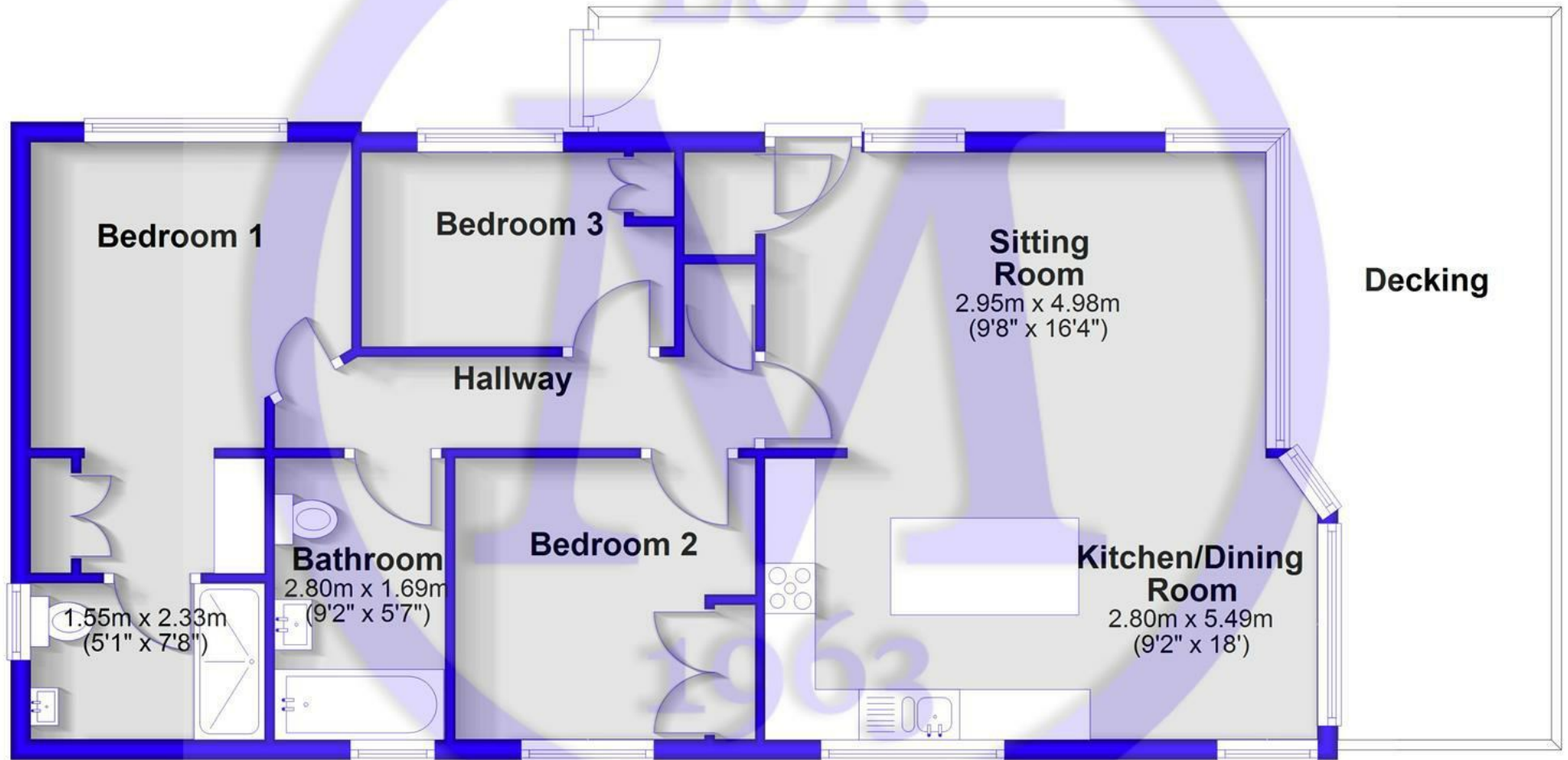


## *Site Fees & Charges*

Annual Site Fee:  
Rates:  
Licence Valid Until:

## Floor Plan

Approx. 73.3 sq. metres (789.4 sq. feet)



Total area: approx. 73.3 sq. metres (789.4 sq. feet)



## Situation

Hoburne Naish Holiday Park is set in a stunning clifftop location, offering breathtaking views of the Dorset coastline. The park provides direct access to beautiful beaches, scenic coastal walks, and is within easy reach of the picturesque New Forest National Park. On-site, you'll find excellent facilities including a heated indoor and outdoor pool, adventure golf, a fitness suite, a multi-use games area, and a restaurant and bar. The park also hosts a vibrant entertainment complex, offering a variety of events and activities throughout the year. Perfect for those seeking relaxation and adventure, Hoburne Naish offers an exceptional lifestyle in a tranquil yet well-connected setting.



[Mitchells.uk.com](http://Mitchells.uk.com)  
[info@mitchells.uk.com](mailto:info@mitchells.uk.com)  
01425 616411

Centenary Buildings  
8-10 Old Milton Road  
New Milton  
Hampshire  
BH25 6DT

**Mitchells**  
1963 — TODAY

