



*37, High Ridge Crescent, New Milton, BH25 5BT*

*£575,000*

**Mitchells**

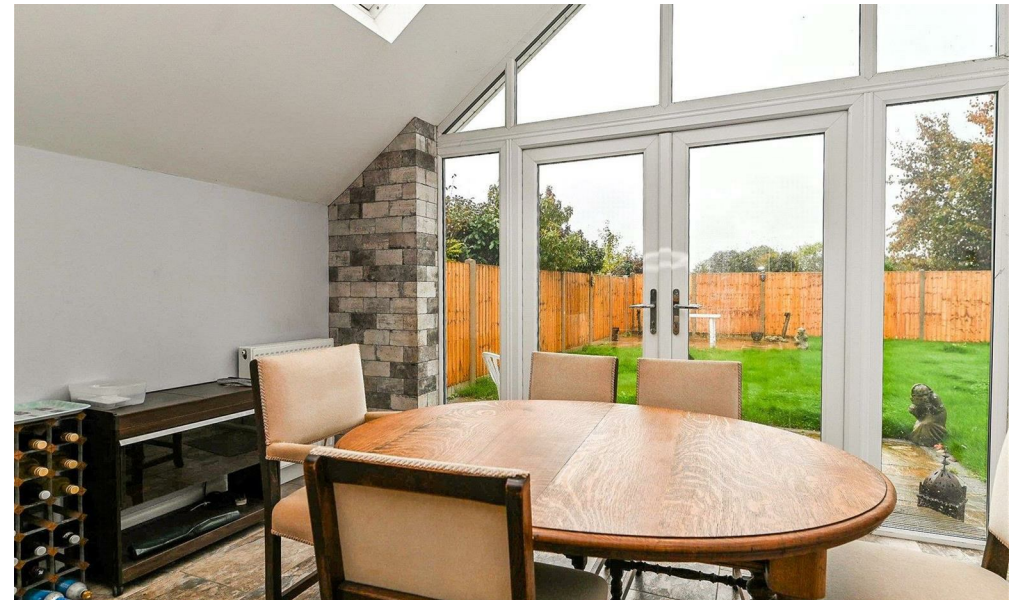
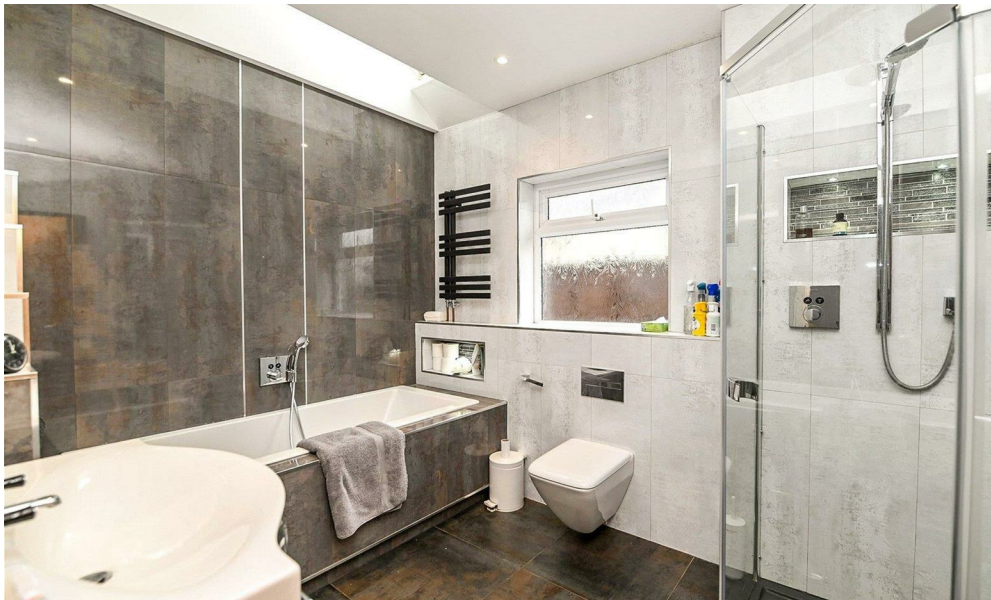
1963 — TODAY



*37 High Ridge Crescent  
New Milton  
Hampshire  
BH25 5BT*

A particularly attractive and characterful three double bedroom detached bungalow that has been comprehensively modernised and extended in recent years, situated in a sought after residential location. Other features of this lovely bungalow include a stunning kitchen/dining room, two en-suite shower rooms, excellent decorative order throughout, a good sized sitting room overlooking the rear garden, and the property is offered with no forward chain.

- Entrance Porch
- Hall
- Sitting Room
- Kitchen/Dining Room
- Three Double Bedrooms
- Two En-Suite Shower Rooms
- Bathroom
- Garage
- Off Road Parking
- Private Gardens



## The Property

Double aspect entrance porch with timber effect flooring, bespoke timber window seats, a contemporary radiator, and a double glazed front door.

Entrance hall with a trap to the roof space with a pull down ladder, and an airing cupboard.

Lovely sitting room with a private outlook over the rear garden, a feature contemporary fireplace with a timber mantle, a tiled hearth, and an electric flame effect fire.

Stunning kitchen/dining room with feature high level bespoke glazing. The kitchen area includes an extensive range of high quality wall and base units with a contrasting stone effect worktop, an inset one and a half bowl sink unit with mixer tap, a range master cooker with an extractor above, space for a tall fridge/freezer, a dishwasher, and a washing machine. Along with part tiled walls, under cupboard lighting, high level double glazed Velux windows, ample room for a dining table, and twin UPVC double glazed casement doors onto the patio and rear garden.

Three good sized double bedrooms, one with a feature bay window, and the other two benefiting from luxury fully tiled en-suite shower rooms. Each en-suite comprises a shower cubicle with a thermostatically controlled shower, a wash basin with storage beneath, a WC, recessed ceiling spotlights, an extractor fan, a chrome ladder style heated towel rail, and a high level double glazed Velux window.

Spacious bathroom fitted with a high quality white suite including a tiled panelled bath with mixer tap and shower attachment over, a corner shower cubicle, a wash basin with storage beneath, a WC, a contemporary radiator, fully tiled walls, recessed ceiling spotlights, an extractor fan, tiled flooring, and a high level double glazed Velux window.





## *Gardens & Grounds*

The property sits on a good sized mature plot, with the front garden featuring a shaped lawn area and a large decorative stone driveway accessed via twin timber gates. This provides off road parking and leads to the attached garage, which has an electrically operated door, power, and lighting.

The rear garden enjoys a good degree of seclusion and is laid mainly to lawn, with three separate private patio areas.

## *Services*

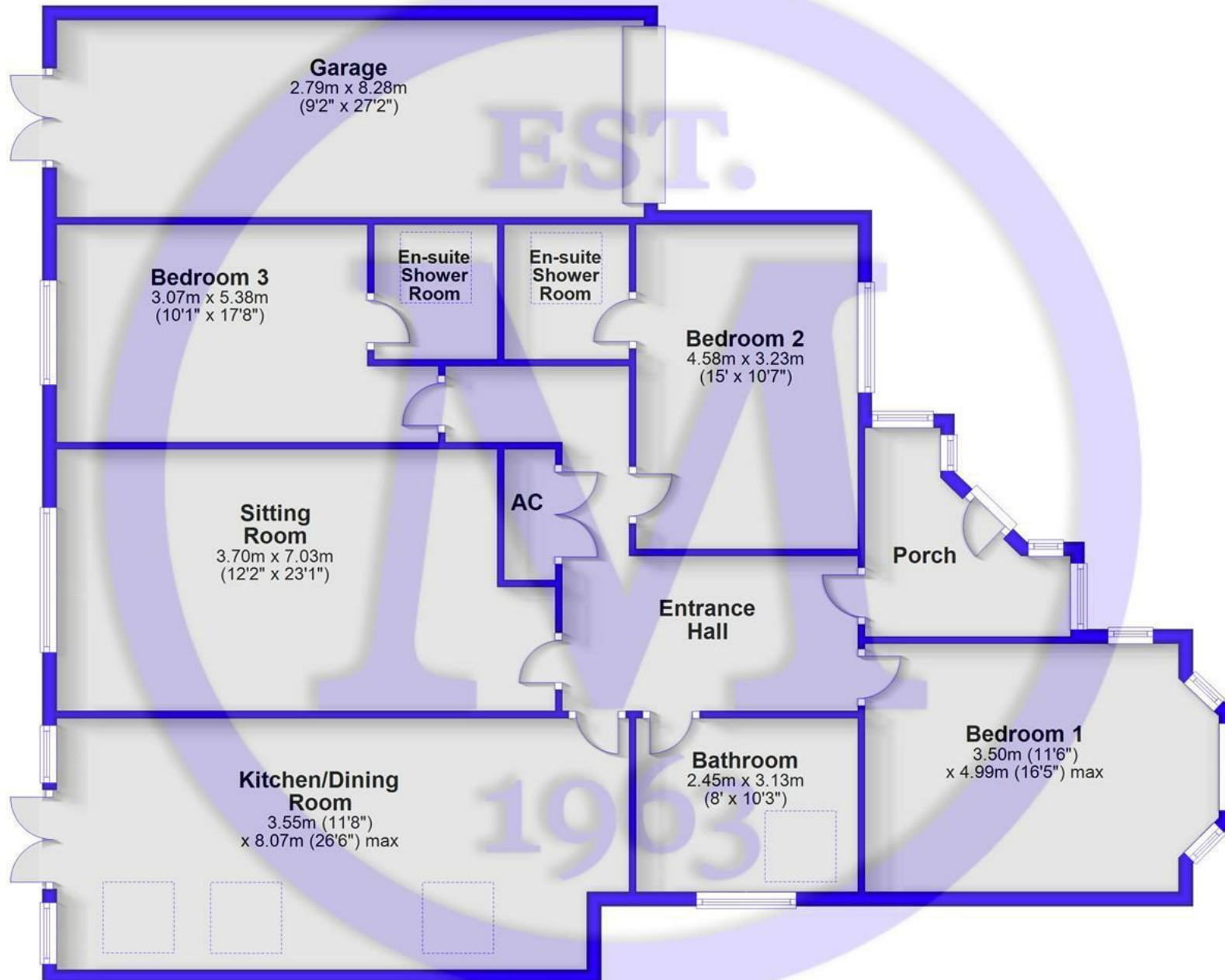
Mains gas, electricity, water and drainage

Council Tax Band: E

Energy Performance Certificate (EPC) Rating: D

## Floor Plan

Approx. 162.5 sq. metres (1748.9 sq. feet)



Total area: approx. 162.5 sq. metres (1748.9 sq. feet)

## Situation

New Milton is a thriving market town situated on the western edge of Hampshire, enjoying a prime location along a picturesque stretch of the Solent coastline. The area offers stunning views across Christchurch Bay to the Isle of Wight and is renowned for its beautiful coastal walks. With a mainline railway station providing direct access to London Waterloo in under two hours, the town is perfectly positioned for commuters and those seeking a coastal lifestyle. New Milton also boasts excellent state and private schools, a 27-hole links-style golf course, and the renowned Chewton Glen Hotel, making it an exceptionally popular destination for those looking to relocate to the coast.





[Mitchells.uk.com](http://Mitchells.uk.com)  
[info@mitchells.uk.com](mailto:info@mitchells.uk.com)  
01425 616411

Centenary Buildings  
8-10 Old Milton Road  
New Milton  
Hampshire  
BH25 6DT

**Mitchells**  
1963 — TODAY

