



*22 Barton Meadow, Hoburne Naish*

*£79,950*

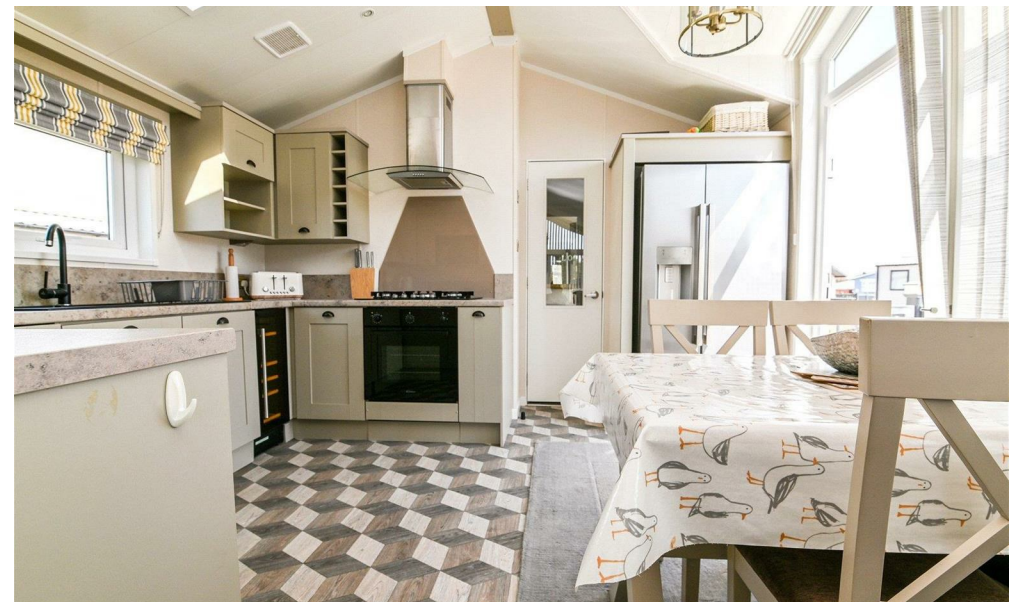
**Mitchells**  
1963 — TODAY



*22 Barton Meadow  
Hoburne Naish Holiday Park  
Barton On Sea  
Hampshire  
BH25 7RE*

A beautifully presented two bedroom holiday home, situated in a quiet, modern development at Hoburne Naish Holiday Park. The property has been well cared for by the current owners, and features include a modern open plan kitchen/living room, two good sized bedrooms, a family shower room, south-facing decking, and allocated parking.

- 2018 Atlas Azalea Lodge 43x13
- 2026 Site Fees: £9,081.59
- 2026 Rates: £700.31
- License Ends: 30/11/2039
- Second Home Only And Cannot Be Main Residence
- Kitchen/Dining Room
- Sitting Room
- Family Shower Room And En Suite Shower Room
- Two Bedrooms
- South-Facing Decking And Allocated Parking



## The Property

Modern kitchen/dining room with vaulted ceilings, integrated appliances, and a four seater dining table with chairs.

The sitting room enjoys a pleasant triple aspect, with doors opening onto the south-facing decking.

Family shower room featuring a UPVC double glazed window, an extractor fan, and a modern suite comprising a WC, a wash basin, and a large shower cubicle.

Bedroom one is a generous king size room with ample built-in storage and access to an en-suite bathroom with a modern suite.

Bedroom two is a good sized twin room with a built-in wardrobe.





## *Gardens & Grounds*

22 Barton Meadow is situated in a modern cul-de-sac within walking distance of all the facilities at Hoburne Naish Holiday Park. The holiday home benefits from a large, south-facing decking area and allocated parking.



## *Site Fees & Charges*

2026 Site Fees: £9,081.59

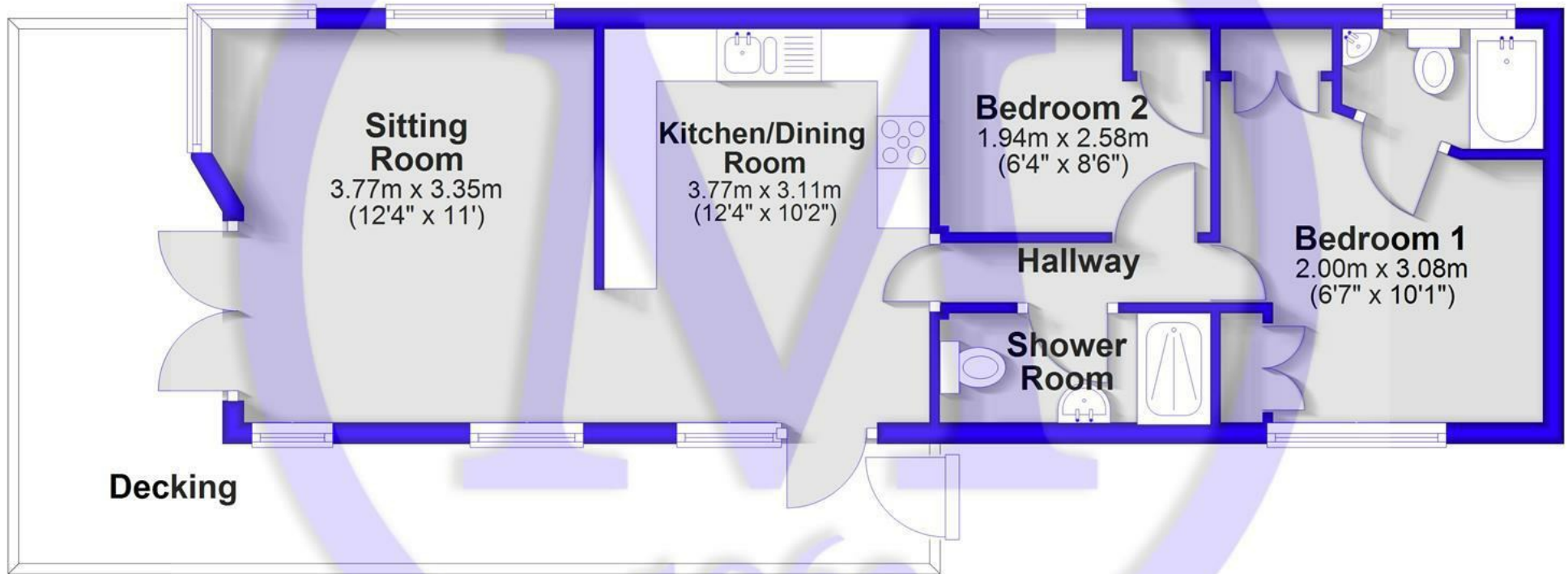
2026 Rates: £700.31

License Ends: 30/11/2039

EST.

## Floor Plan

Approx. 47.2 sq. metres (508.4 sq. feet)



Total area: approx. 47.2 sq. metres (508.4 sq. feet)



## Situation

Hoburne Naish Holiday Park is set in a stunning clifftop location, offering breathtaking views of the Dorset coastline. The park provides direct access to beautiful beaches, scenic coastal walks, and is within easy reach of the picturesque New Forest National Park. On-site, you'll find excellent facilities including a heated indoor and outdoor pool, adventure golf, a fitness suite, a multi-use games area, and a restaurant and bar. The park also hosts a vibrant entertainment complex, offering a variety of events and activities throughout the year. Perfect for those seeking relaxation and adventure, Hoburne Naish offers an exceptional lifestyle in a tranquil yet well-connected setting.



[Mitchells.uk.com](http://Mitchells.uk.com)  
[info@mitchells.uk.com](mailto:info@mitchells.uk.com)  
01425 616411

Centenary Buildings  
8-10 Old Milton Road  
New Milton  
Hampshire  
BH25 6DT

**Mitchells**  
1963 — TODAY

