



*35 Highcliffe Meadow, Hoburne Naish*

£110,000

**Mitchells**  
1963 — TODAY



*35 Highcliffe Meadows  
Hoburne Naish Holiday Park  
Barton On Sea  
Hampshire  
BH25 7RE*

This immaculately presented ABI Harrogate is ideally situated in an enviable position on the ever popular Hoburne Naish Holiday Park. The property benefits from a modern open plan living area with sliding doors opening onto a large decking area, a separate utility room, a family bathroom, and two bedrooms, both with built-in storage. Bedroom one also benefits from an en-suite shower room. An internal viewing is highly recommended to fully appreciate this beautiful holiday home.

- 2020 ABI Harrogate 41x20
- License Ends: 30/11/2045
- 2026 Site Fees: £9,591.05
- 2026 Rates: £700.31
- Second Home Only, Cannot Be Main Residence
- Open Plan Living Area
- Two Bedrooms
- Family Bathroom & En-Suite Shower Room
- Separate Utility Room
- South Facing Decking & Allocated Parking Space



## The Property

Hallway with a boiler cupboard housing the combination boiler and built-in storage.

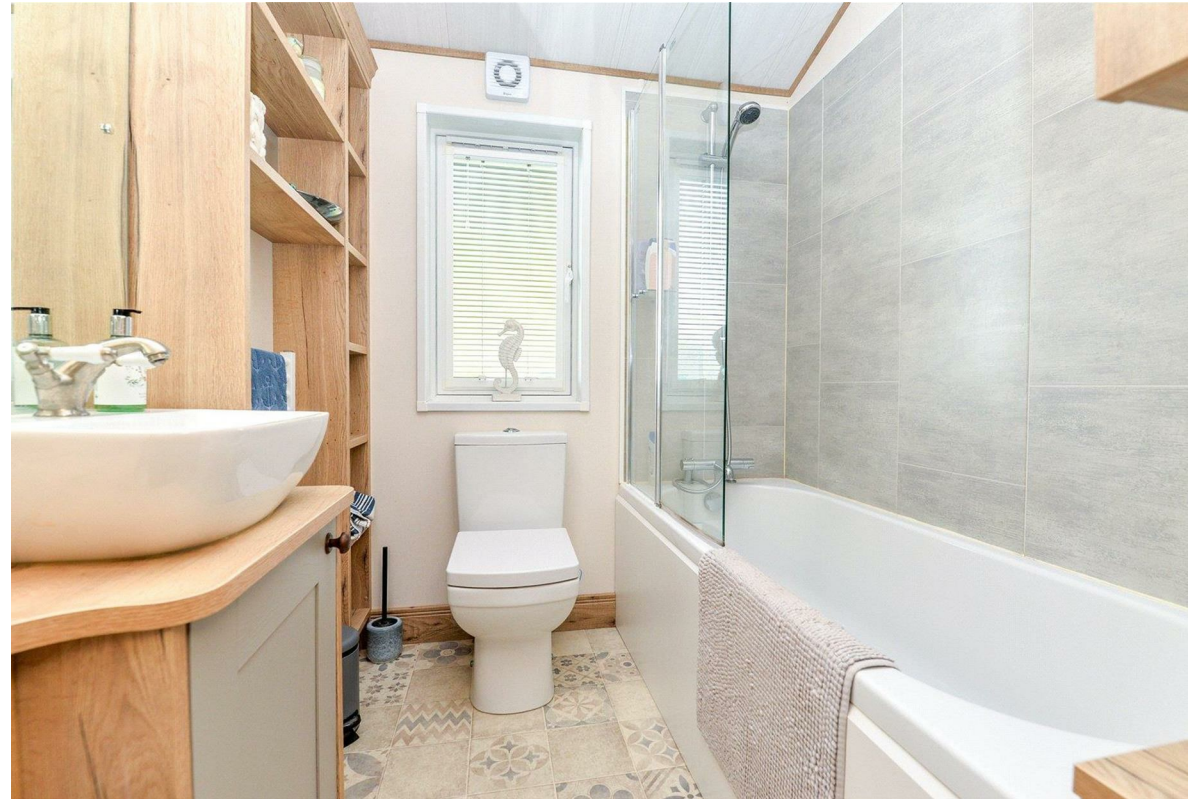
The open plan kitchen/living area includes a spacious kitchen with wall and base storage units, a Leisure Range style cooker with gas hob and combination ovens, a slimline dishwasher, an under counter fridge, and a separate freezer. The living room benefits from a feature electric fireplace, ample space for furniture, and sliding doors leading onto the large decking area.

The family bathroom comprises a bath with shower attachment and attractive tiling, a WC, heated towel rail, built-in wash hand basin with storage beneath, and an extractor fan.

The main bedroom is a generous size, accommodating a king size bed with storage beneath, a built-in triple wardrobe, bedside cabinets, a dressing table, and drawers. The en-suite includes a large shower cubicle, a heated towel rail, a WC, a wash hand basin with storage beneath, and an extractor fan.

Bedroom two features twin single beds with storage beneath, built-in matching wardrobes, drawers, bedside cabinet, and dressing table.

An internal viewing is highly recommended.





## *Gardens & Grounds*

To the front of the property is a large south facing decking area that continues down the side of the home.

The property also benefits from an allocated parking space and additional space for storage units. There is also ample visitor parking close to the property.

This particular holiday home is situated in an idyllic position within a modern, quiet cul-de-sac at Hoburne Naish Holiday Park and is within easy walking distance of all facilities.

## *Site Fees & Charges*

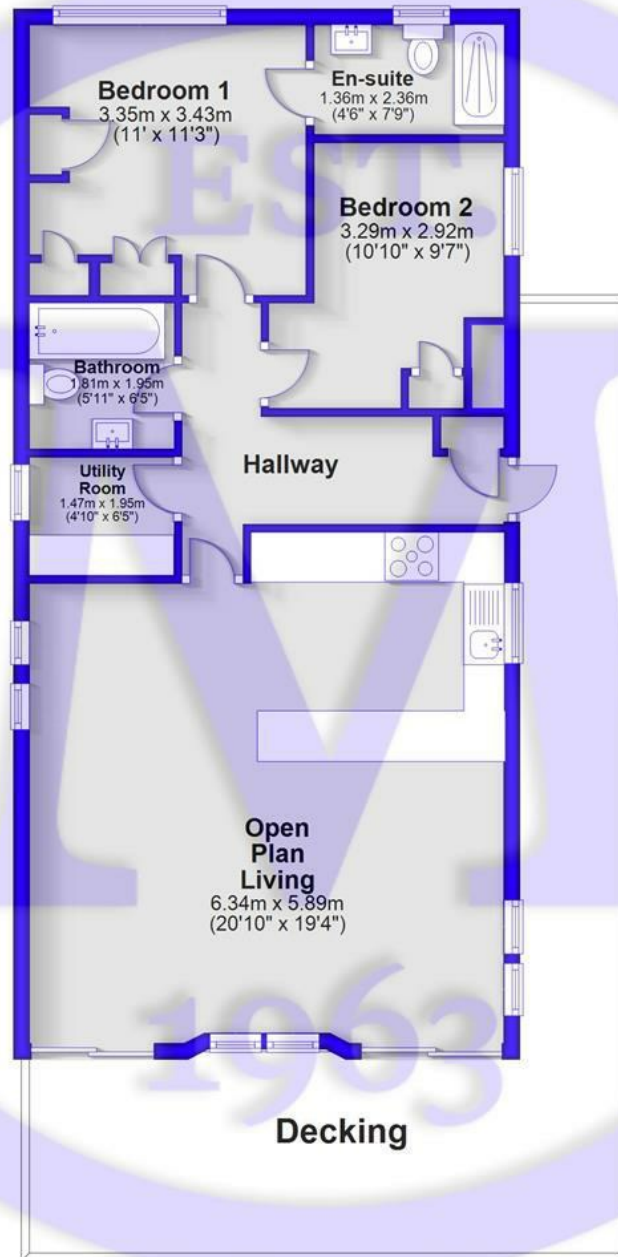
2026 Site Fees: £9,591.05

2026 Rates: £700.31

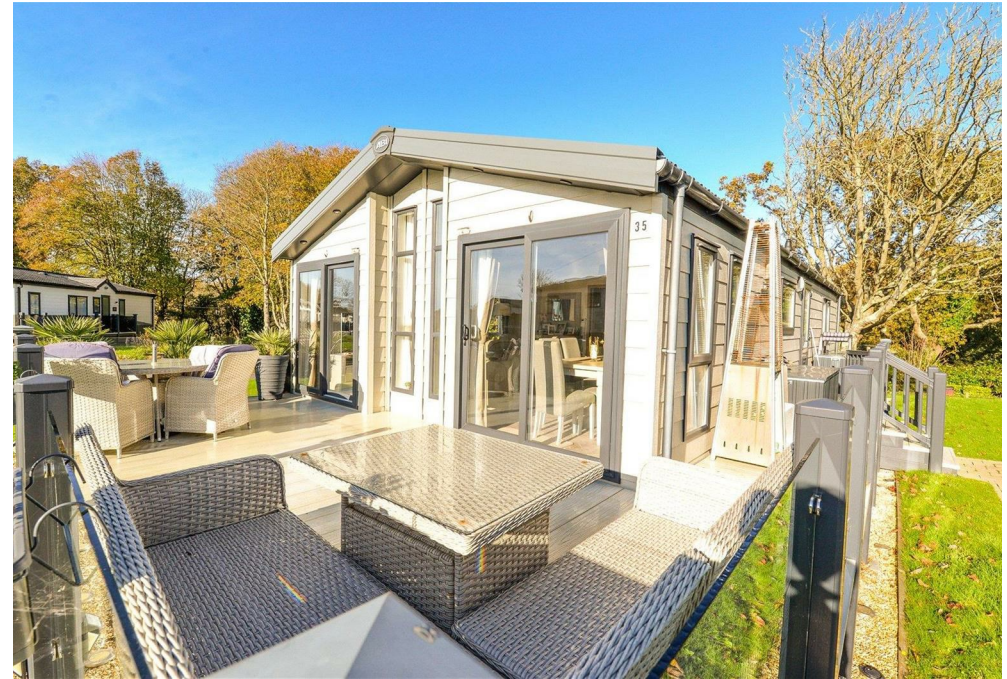
License Ends: 30/11/2045

## Ground Floor

Approx. 74.7 sq. metres (804.6 sq. feet)  
(excluding Decking)



Total area: approx. 74.7 sq. metres (804.6 sq. feet)



## Situation

Hoburne Naish Holiday Park is set in a stunning clifftop location, offering breathtaking views of the Dorset coastline. The park provides direct access to beautiful beaches, scenic coastal walks, and is within easy reach of the picturesque New Forest National Park. On-site, you'll find excellent facilities including a heated indoor and outdoor pool, adventure golf, a fitness suite, a multi-use games area, and a restaurant and bar. The park also hosts a vibrant entertainment complex, offering a variety of events and activities throughout the year. Perfect for those seeking relaxation and adventure, Hoburne Naish offers an exceptional lifestyle in a tranquil yet well-connected setting.



[Mitchells.uk.com](http://Mitchells.uk.com)  
[info@mitchells.uk.com](mailto:info@mitchells.uk.com)  
01425 616411

Centenary Buildings  
8-10 Old Milton Road  
New Milton  
Hampshire  
BH25 6DT

**Mitchells**  
1963 — TODAY

