



*26 Kingfisher Way, Christchurch BH23 4RT*

*£400,000*

**Mitchells**

1963 — TODAY



# *Kingfisher Way, Christchurch*

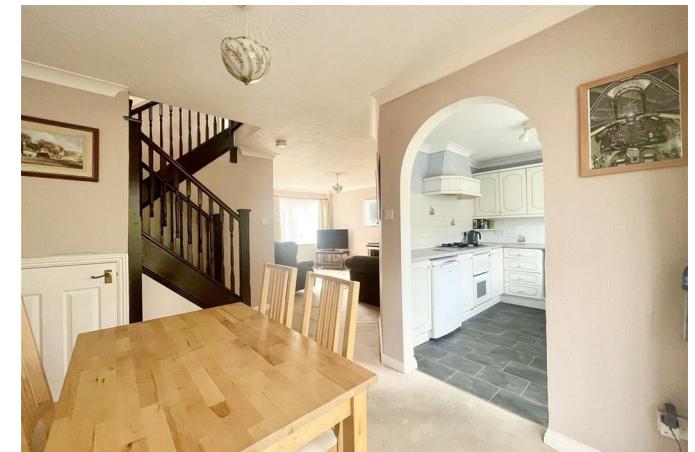
## SCOPE FOR EXTENSION/MODERNISATION

A delightful detached home of approximately 920 sq.ft, ideally located on the highly sought after Saxons Landing development right by Avon Beach and Mudeford Quay.



## The Property

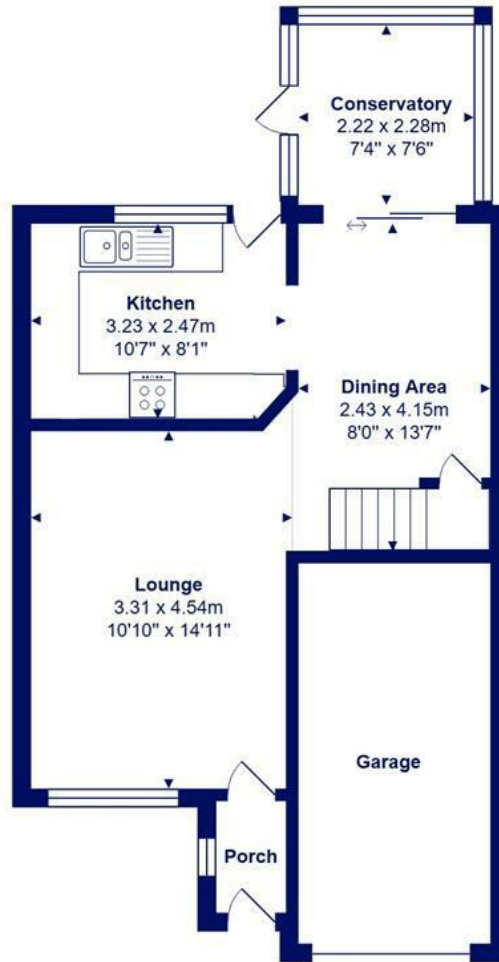
- Lovely detached house of approximately 920 sq ft.
- Three first floor bedrooms, with the master benefitting from an ensuite
- Separate family bathroom
- Fitted kitchen with access to the garden
- Dining room leading onto a uPVC conservatory extension
- Spacious lounge
- Private, low maintenance rear garden with side access
- Integral Garage and off road parking
- Situated in an enviable location just a short walk to Avon Beach and Mundeford Quay
- Council Tax Band



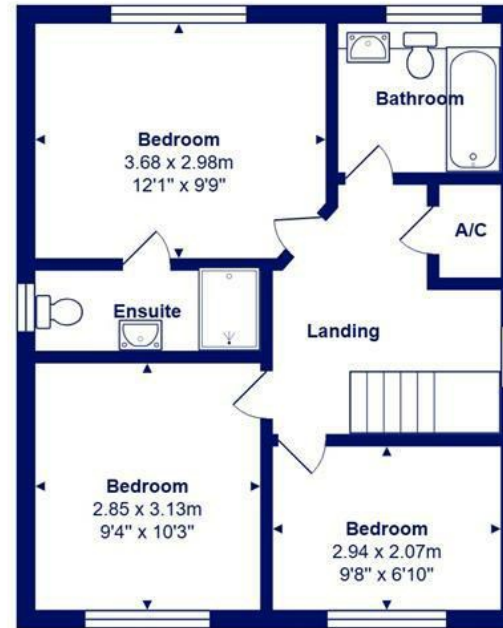


Location





Ground Floor



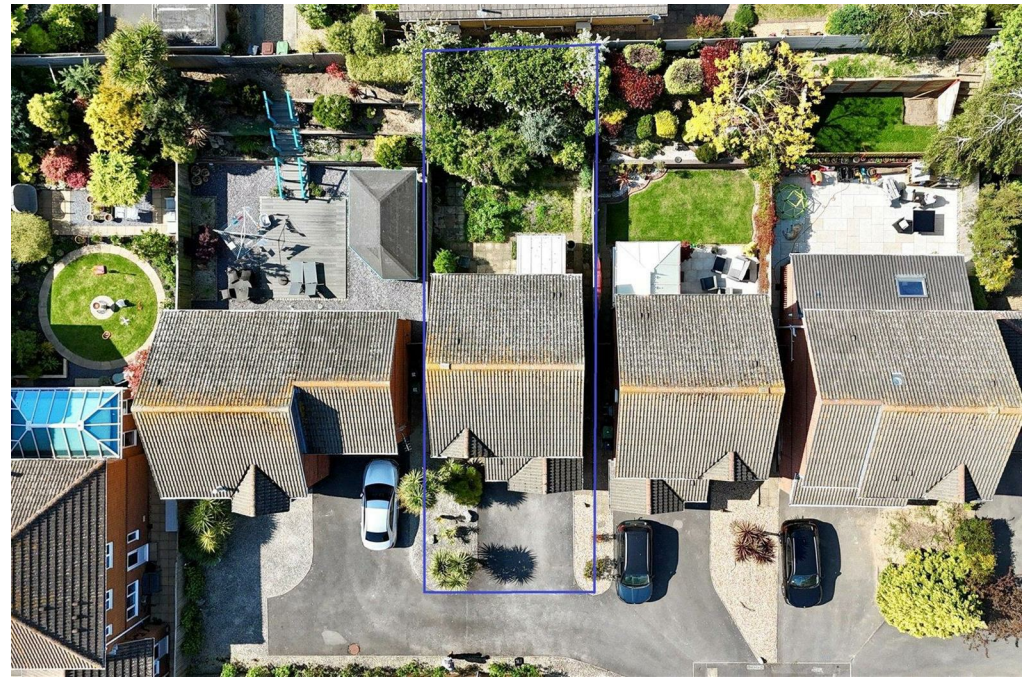
First Floor



Total Area: 84.9 m<sup>2</sup> ... 914 ft<sup>2</sup> (excluding garage)

All measurements are approximate and for display purposes only







[www.mitchells.uk.com](http://www.mitchells.uk.com)  
[Mundeford@mitchells.uk.com](mailto:Mundeford@mitchells.uk.com)  
01202 499295

Mundeford  
112-114 Cambridge House Stanpit  
Christchurch  
BH23 3ND

