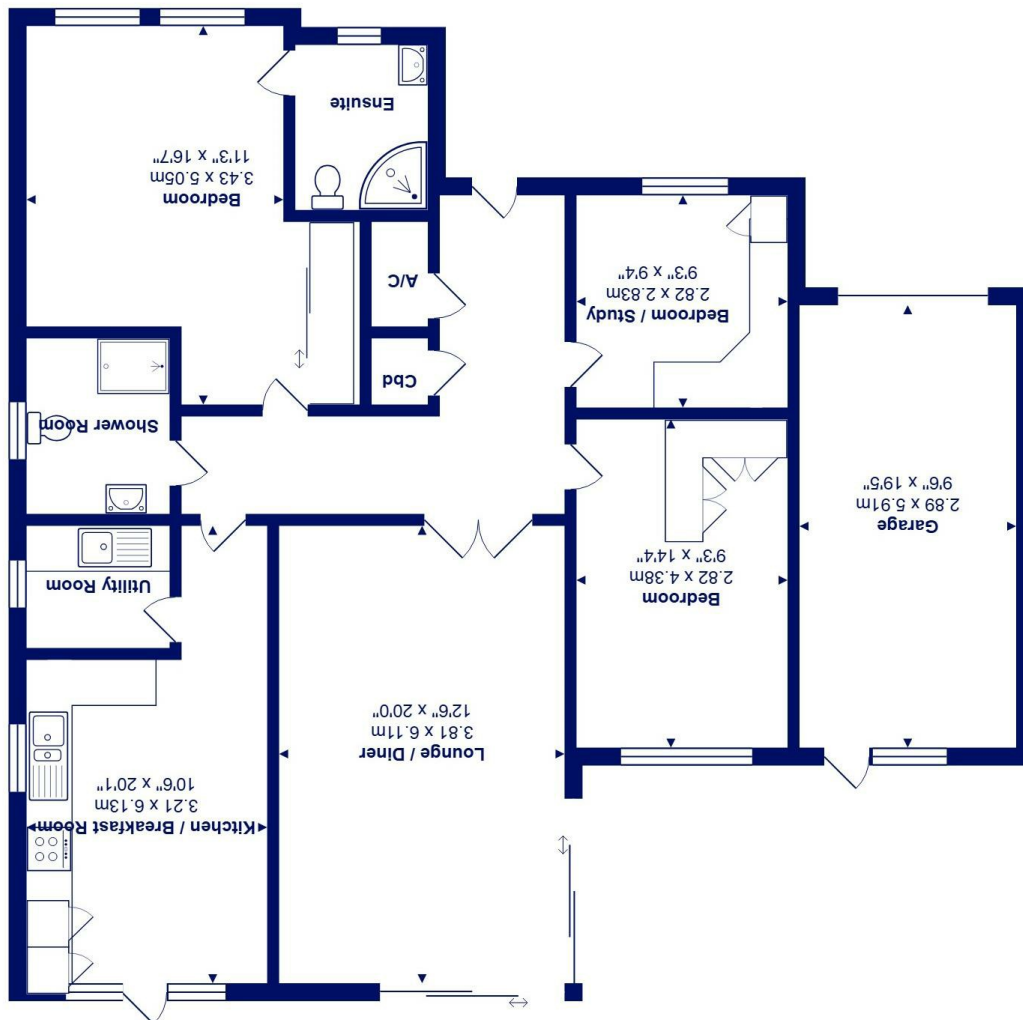




Total Area: 109.0 m<sup>2</sup> ... 1174 ft<sup>2</sup> (excluding garage)  
All measurements are approximate and for display purposes only



57 Chewton Common Road, Highcliffe on Sea, BH23 5LZ £720,000

**Mitchells**  
1963 — TODAY

An immaculate detached bungalow of quite some style and quality, built by Pennyfarthing Homes in 2014 and situated in a brilliant location right by the village centre and featuring a lovely garden that backs onto Chewton Common. Presented in true show home order and boasting stylish fittings, this is a really superb bungalow that is ready to move into straight away- if you are looking for a 'turn-key' bungalow, this is it! No forward chain.

Forming part of this small, select development of high-end bungalows, this fabulous home has been kept beautifully by the current owners from new and is still incredibly sharp throughout. The bustling village centre with its excellent array of facilities is just a short stroll away with the beach being a little further on, making this the perfect position for retirement living.

- Top quality detached bungalow of about 1200 sq ft with designer fittings and immaculate decor
- Spacious master bedroom with bespoke fitted wardrobes and luxury en-suite shower room
- Two further bedrooms, both with fitted wardrobes (bed three set up as a smart office)
- Contemporary fitted kitchen/breakfast room with integrated appliances, quartz worktops and adjacent utility room
- Large sitting/dining room with lots of glazing making the most of the view over the lovely garden
- Gas fired heating, UPVC double glazing, flat plastered ceilings, solid internal doors and security system
- Plenty of off-road parking on block paved driveway, integral garage and a beautiful rear garden with gated access onto the common
- No forward chain

EPC Rating Band: C

Council Tax Band: F

Freehold

Successful buyers will be required to complete online identity checks provided by Lifetime Legal. The cost of these checks is £45 inc. VAT per purchase which is paid in advance, directly to Lifetime Legal. This check verifies your identity in line with our obligations as stipulated by our regulatory body, HMRC

