



6, Wendover Close, Barton on Sea, New Milton, BH25 7LX

£450,000

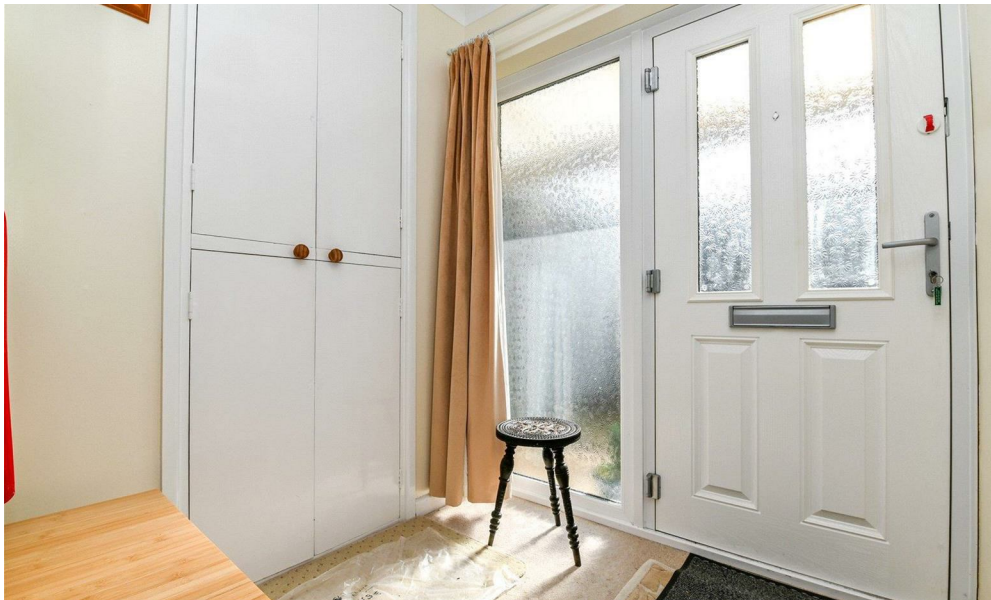
Mitchells
1963 — TODAY



*6 Wendover Close
Barton on Sea
New Milton
Hampshire
BH25 7LX*

This beautifully presented, two double bedroom detached bungalow is situated in a quiet cul-de-sac, just a short walk from the local shops and within walking distance of New Milton town centre, and Barton on Sea clifftop and beach. The property offers bright and spacious accommodation, with features including a modern kitchen and shower room, a through sitting/dining room, a utility area, and a private, secluded garden.

- Entrance Hall & Internal Hallway
- Sitting Room
- Dining Room
- Kitchen
- Conservatory
- Utility Area
- Two Double Bedrooms
- Shower Room
- Driveway & Garage
- Secluded Garden



The Property

Entrance hall with a useful storage cupboard housing the Worcester combination boiler, and providing access through to the utility area.

Utility area with space and plumbing for a washing machine and tumble dryer, part tiled walls, and a UPVC window.

A glazed door leads through to the sitting room, with a large picture window to the front, a feature fireplace with a timber surround and inset electric fire, a TV aerial point, and an archway leading through to the dining room.

Dining room with a UPVC window, a UPVC door into the conservatory, ample space for furniture, and access through to the internal hallway and kitchen.

The conservatory is constructed with a dwarf cavity brick wall, UPVC double glazed windows, a UPVC double glazed door, and a polycarbonate roof.

The kitchen is fitted with a range of cream shaker style wall and base units, a contrasting timber effect worktop, a stainless steel sink with a mixer tap and drainer, a tiled splashback, and space and plumbing for a freestanding cooker and a tall, stand up fridge/freezer. A UPVC double glazed door leads out to the rear garden and garage.

Internal hallway with a loft hatch featuring a drop down ladder, lighting, and flooring, a central heating thermostat, and a useful storage cupboard with shelving and hanging space.

Shower room with tile effect flooring and a modern suite comprising a walk-in double shower with thermostatic shower fittings and sliding glass shower doors, a pedestal wash hand basin with mixer tap, a tiled splashback, a WC, a chrome heated towel rail, and a UPVC window.

There are two lovely double bedrooms, both benefiting from built-in storage, with the master enjoying an outlook to the front.





Gardens & Grounds

To the front of the property is a large lawn area and a single driveway providing off road parking for approximately three vehicles, with access to the single garage, which features an up and over door, power, lighting, and a pedestrian door to the rear garden.

The rear garden has been beautifully landscaped, featuring a large patio area, a generous lawn with mature raised beds, and high level fencing and hedging, making it extremely private and secluded.

Services

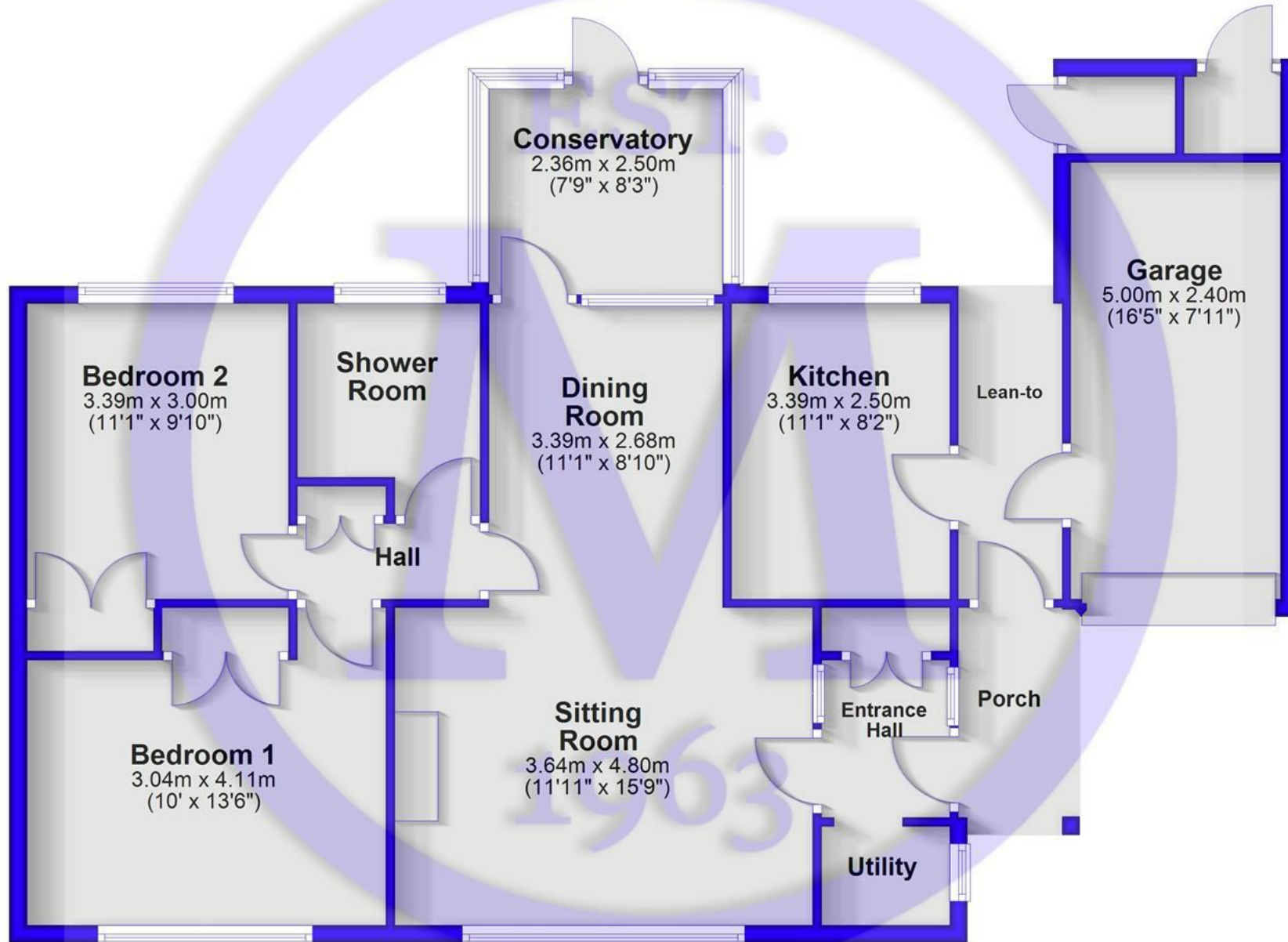
Mains gas, electricity, water and drainage

Council Tax Band: D

Energy Performance Certificate (EPC) Rating:

Floor Plan

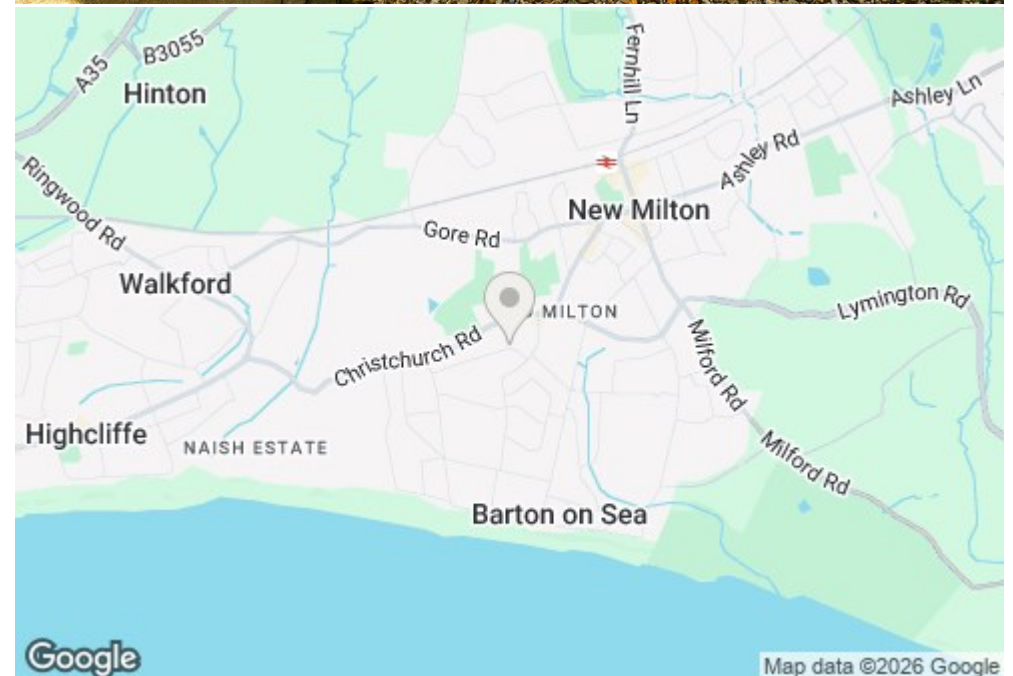
Approx. 104.3 sq. metres (1123.1 sq. feet)



Total area: approx. 104.3 sq. metres (1123.1 sq. feet)

Situation

Barton on Sea, a charming suburb of New Milton, enjoys a prime location along a picturesque stretch of the Solent coastline. With sweeping views across Christchurch Bay to the Isle of Wight and access to stunning coastal walks in both directions, it's a haven for nature lovers and outdoor enthusiasts. Its popularity is further enhanced by proximity to the open landscapes of the New Forest National Park, direct mainline rail links to London Waterloo, and a range of high-quality amenities. These include excellent schools, fine dining at the renowned Chewton Glen Hotel and Pebble Beach restaurant, and a 27-hole links-style golf course. Offering a perfect blend of natural beauty, convenience, and luxury, Barton on Sea continues to attract those seeking an exceptional coastal lifestyle.





Mitchells.uk.com
info@mitchells.uk.com
01425 616411

Centenary Buildings
8-10 Old Milton Road
New Milton
Hampshire
BH25 6DT

Mitchells
1963 — TODAY

