



9, Stag Close, New Milton, BH25 5GD

£299,950

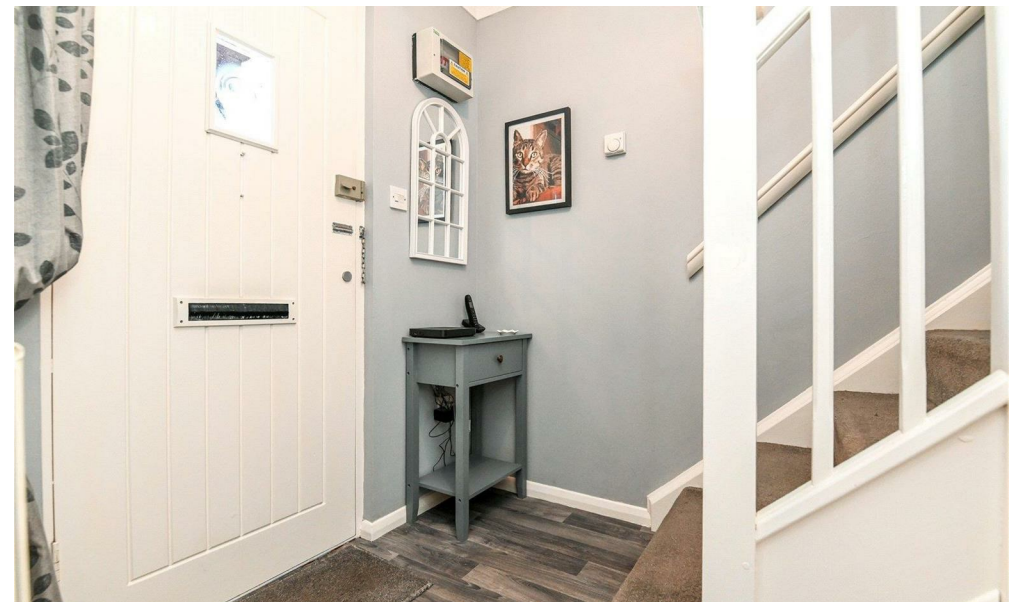
Mitchells
1963 — TODAY



*9 Stag Close
New Milton
Hampshire
BH25 5GD*

This beautifully presented two double bedroom end of terrace house is situated in a popular development within walking distance of Ballard Lake, New Milton town centre, and the mainline railway station. The property offers bright, modern accommodation, featuring a fantastic kitchen/dining room, a separate sitting room, two double bedrooms, a sunny south facing garden, and allocated parking.

- Entrance Hall
- Kitchen/Dining Room
- Sitting Room
- First Floor Landing
- Two Double Bedrooms
- Family Bathroom
- Allocated Parking
- South Facing Garden



The Property

Entrance hall with timber effect flooring, a coats cupboard, an electrical consumer unit, a central heating thermostat, and stairs leading to the first floor landing.

A doorway leads through to the kitchen, which is fitted with modern white shaker style wall and base units, a contrasting granite effect worktop, an eye level double oven, a four burner gas hob with an extractor fan above, a tiled splashback, and a sink with a mixer tap and drainer. There is also a walk-in storage cupboard. The kitchen provides space and plumbing for a washing machine and a tall stand up fridge, along with ample room for a table and chairs. A cupboard houses the Glow worm central heating boiler. An archway leads through to the sitting room.

The sitting room enjoys a bright southerly aspect, with a UPVC door leading out to the garden, a TV aerial point, and an understairs storage cupboard.

The first floor landing has a hatch to the loft space.

The shower room is beautifully fitted with a walk-in corner shower cubicle featuring thermostatic shower fittings and sliding glass doors, a WC with a hidden cistern, a wash hand basin with a mixer tap and storage beneath, a chrome heated towel rail, a mirror fronted medicine cabinet, and a UPVC double glazed window.

The master bedroom overlooks the rear garden with a bright, sunny southerly aspect, a large UPVC window, and ample space for furniture.

Bedroom two is situated at the front of the property, with an airing cupboard housing the hot water cylinder and a large UPVC window.



Gardens & Grounds

To the front of the property, there is a parking area, a pathway leading to the front door, and a garden laid with decorative slate chippings, with a bin store adjacent to the front door.

The rear garden enjoys a bright, sunny southerly aspect and is extremely private and secluded, surrounded by high level fencing. There is a large storage shed at the rear, mature and colourful planting, and a pergola adjoining the back of the property with a polycarbonate roof, surrounded by decorative trellis.

The property benefits from allocated parking.

The property is offered in outstanding condition throughout, and a viewing is highly recommended.



Services

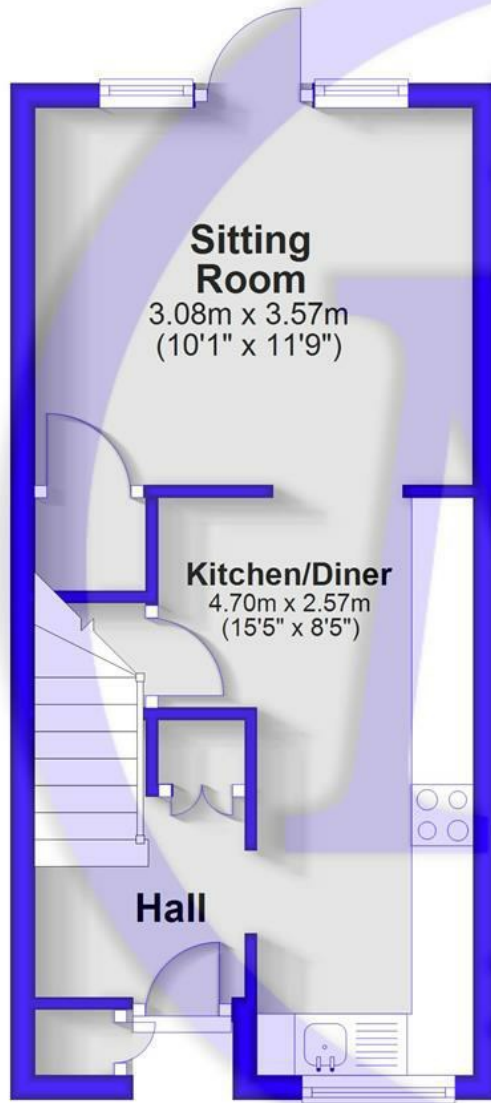
Mains gas, electricity, water and drainage

Council Tax Band: C

Energy Performance Certificate (EPC) Rating:

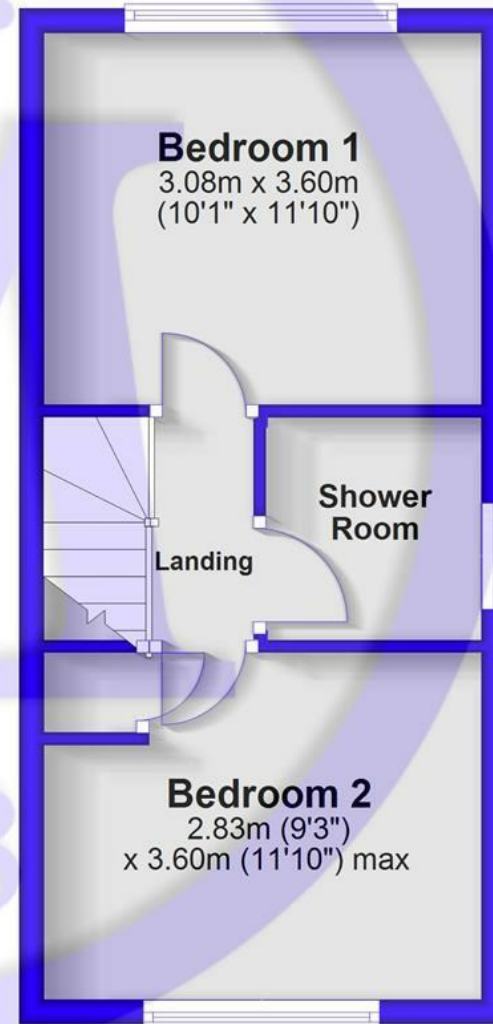
Ground Floor

Approx. 27.4 sq. metres (294.7 sq. feet)



First Floor

Approx. 28.0 sq. metres (301.8 sq. feet)



Total area: approx. 55.4 sq. metres (596.5 sq. feet)



Situation

New Milton is a thriving market town situated on the western edge of Hampshire, enjoying a prime location along a picturesque stretch of the Solent coastline. The area offers stunning views across Christchurch Bay to the Isle of Wight and is renowned for its beautiful coastal walks. With a mainline railway station providing direct access to London Waterloo in under two hours, the town is perfectly positioned for commuters and those seeking a coastal lifestyle. New Milton also boasts excellent state and private schools, a 27-hole links-style golf course, and the renowned Chewton Glen Hotel, making it an exceptionally popular destination for those looking to relocate to the coast.



Mitchells.uk.com
info@mitchells.uk.com
01425 616411

Centenary Buildings
8-10 Old Milton Road
New Milton
Hampshire
BH25 6DT

Mitchells
1963 — TODAY

