



15, Clifftop View, Hoburne Naish Holiday Park, Barton On Sea,

£125,000

Mitchells

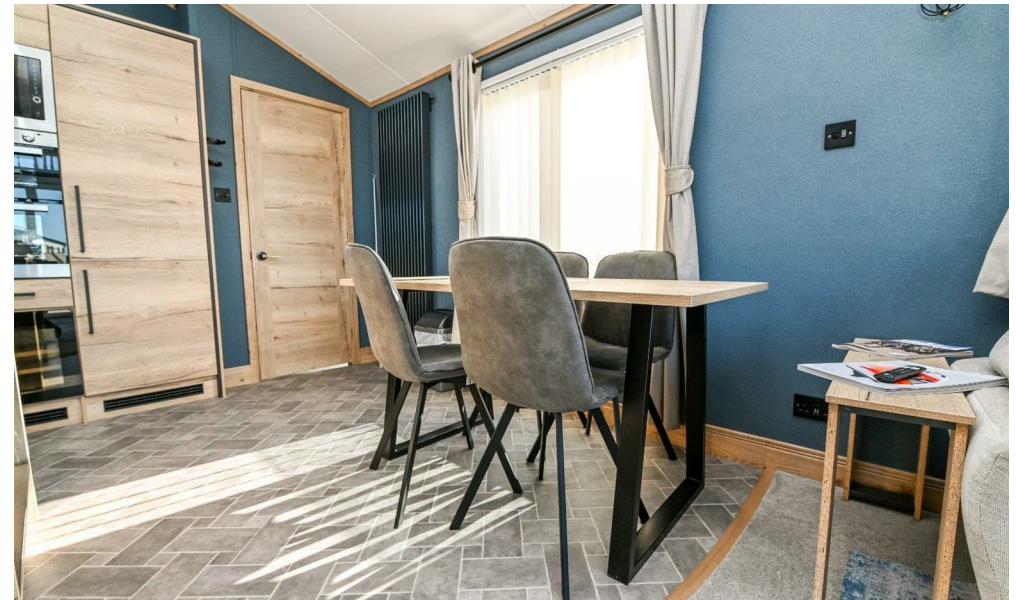
1963 — TODAY



*15 Clifftop View
Hoburne Naish Holiday
Park
Barton On Sea
Hampshire
BH25 7RE*

An incredible two bedroom, two bathroom holiday home situated on a fantastic pitch in the Clifftop View development at the popular Hoburne Naish Holiday Park. The property offers a spacious kitchen/family room with sliding doors opening onto the south-facing decking, which enjoys beautiful sea views, two bedrooms, with the master bedroom benefiting from a dressing area and an en-suite shower room, a family bathroom, and two allocated parking spaces. An internal viewing is highly recommended.

- 2023 ABI Everdere 44x14
- License Ends 20/11/2043
- 2026 Pitch Fees: £10,243.37
- 2026 Rates: £700.31
- Second Home Only, Cannot Be Main Residence
- Open Plan Kitchen/Living Room
- Two Bedrooms
- Family Bathroom
- En-Suite Shower Room
- South-Facing Decking And Allocated Parking



The Property

Entrance hall with tile effect flooring, fitted coat hooks, and storage.

Kitchen/dining room featuring a continuation of the tile effect flooring, a pleasant dual aspect, a Velux window, a contemporary radiator, and a four seater dining table with chairs. The kitchen includes a range of timber effect wall and base units, a contrasting marble effect worktop, a one and a half bowl sink unit with a mixer tap and drainer, a five burner gas hob with an extractor fan above, and integrated appliances including eye level double ovens, a microwave, a useful drinks fridge, a tall stand up fridge/freezer, a full sized dishwasher, and a washing machine.

The sitting room enjoys a pleasant southerly aspect with sliding doors opening onto the decking, which benefits from beautiful sea views, a feature electric fireplace, and carpeted flooring.

Bedroom one is a generous king sized room with a fantastic range of fitted furniture, including two bedside cabinets, a chest of drawers, a triple wardrobe, a large picture window, a dressing area with an additional double wardrobe and a dressing table, and a door leading through to the en-suite.

En-suite shower room with tile effect flooring, fitted shelving, a cupboard housing the gas fired central heating boiler, an extractor fan, a UPVC window, and a modern suite comprising a wash hand basin with mixer tap and storage beneath, a ladder style heated towel rail, a WC, and a shower cubicle with a waterfall showerhead, handheld attachments, and a glass sliding door.

Bedroom two is set up as a twin bedroom with two single beds, a double wardrobe, a dressing table, and a UPVC double glazed window.

Family bathroom with tile effect flooring, a Velux window, an extractor fan, and a suite comprising a panel bath with a mixer tap, handheld shower attachments, and a glass shower screen, a WC, fitted storage, a wash hand basin with mixer tap and storage beneath, and a ladder style heated towel rail.





Gardens & Grounds

15 Clifftop View is a fantastic pitch with the holiday home boasting a spacious south-facing decking area offering sea views, two allocated parking spaces, storage containers, and is within walking distance of all the facilities at Hoburne Naish Holiday Park.

Site Fees & Charges

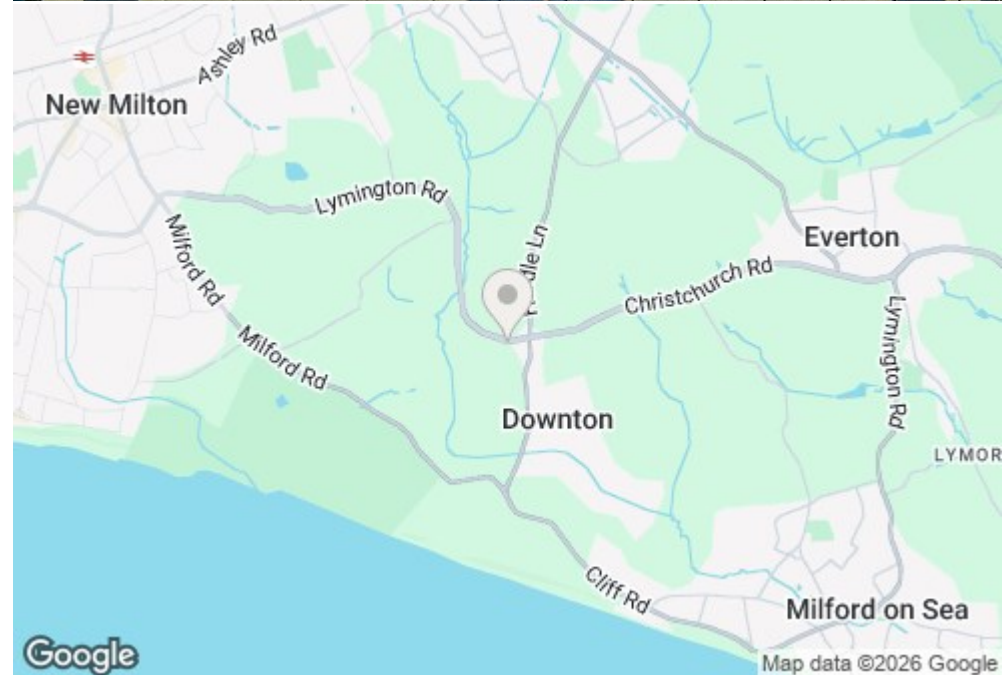
Annual Site Fee:
Rates:
Licence Valid Until:

EST. Floor Plan

Approx. 54.6 sq. metres (588.1 sq. feet)



Total area: approx. 54.6 sq. metres (588.1 sq. feet)



Situation

Hoburne Naish Holiday Park is set in a stunning clifftop location, offering breathtaking views of the Dorset coastline. The park provides direct access to beautiful beaches, scenic coastal walks, and is within easy reach of the picturesque New Forest National Park. On-site, you'll find excellent facilities including a heated indoor and outdoor pool, adventure golf, a fitness suite, a multi-use games area, and a restaurant and bar. The park also hosts a vibrant entertainment complex, offering a variety of events and activities throughout the year. Perfect for those seeking relaxation and adventure, Hoburne Naish offers an exceptional lifestyle in a tranquil yet well-connected setting.



Mitchells.uk.com
info@mitchells.uk.com
01425 616411

Centenary Buildings
8-10 Old Milton Road
New Milton
Hampshire
BH25 6DT

Mitchells
1963 — TODAY

