



37 Curlew Road, Christchurch BH23 4DA

£395,000

Mitchells

1963 — TODAY



Curlew Road, Christchurch

A very smart and extended, semi-detached house of about 1080 sq ft that backs onto Mudeford Wood and enjoys a fabulous large open plan kitchen/dining room.



The Property

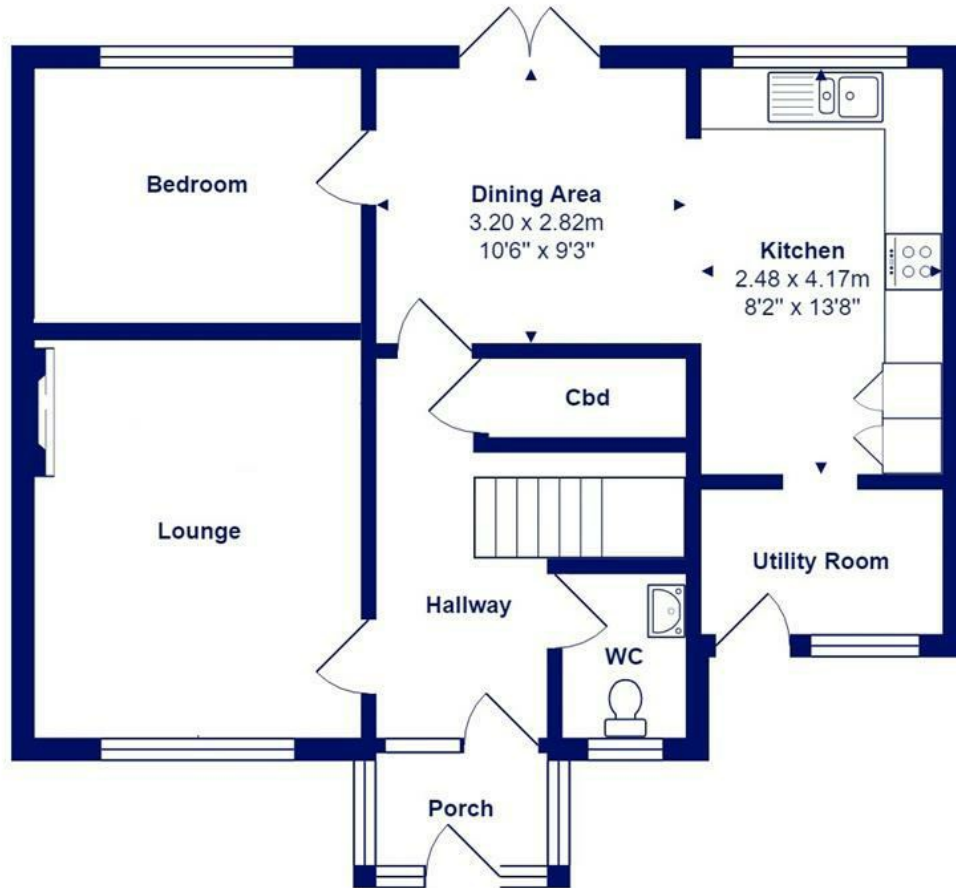
- Excellent family home in superb condition
- Four bedrooms, one ground floor
- Large family bathroom with separate shower cubicle
- Stylish and recently fitted open plan kitchen/dining room with access onto the garden
- Sitting room, ground floor bedroom/dining room and separate utility room
- Delightful rear garden backing onto Mudeford Wood and with a garage and parking space nearby
- Catchment area for both Mudeford Infant and Junior Schools
- About 1 mile to Mudeford Quay and Avon Beach
- Council Tax Band



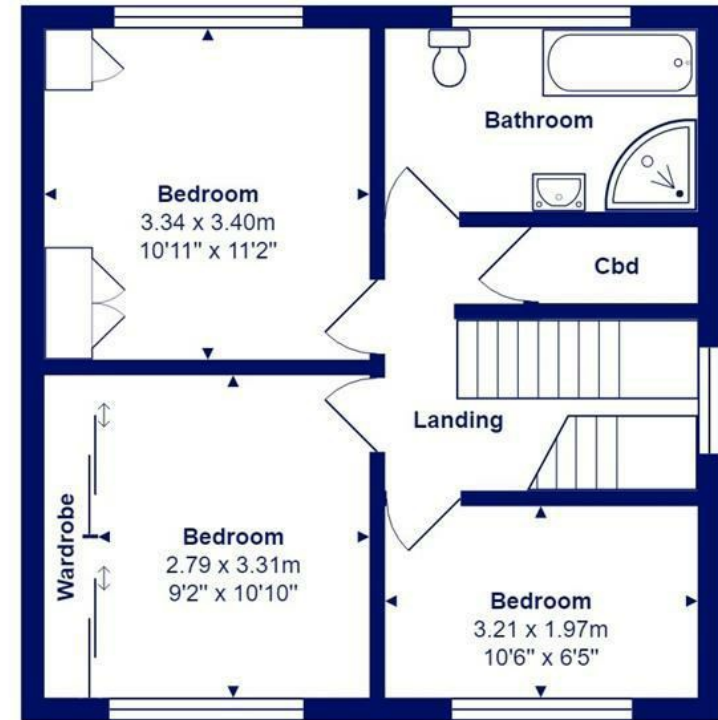


Location





Ground Floor



First Floor

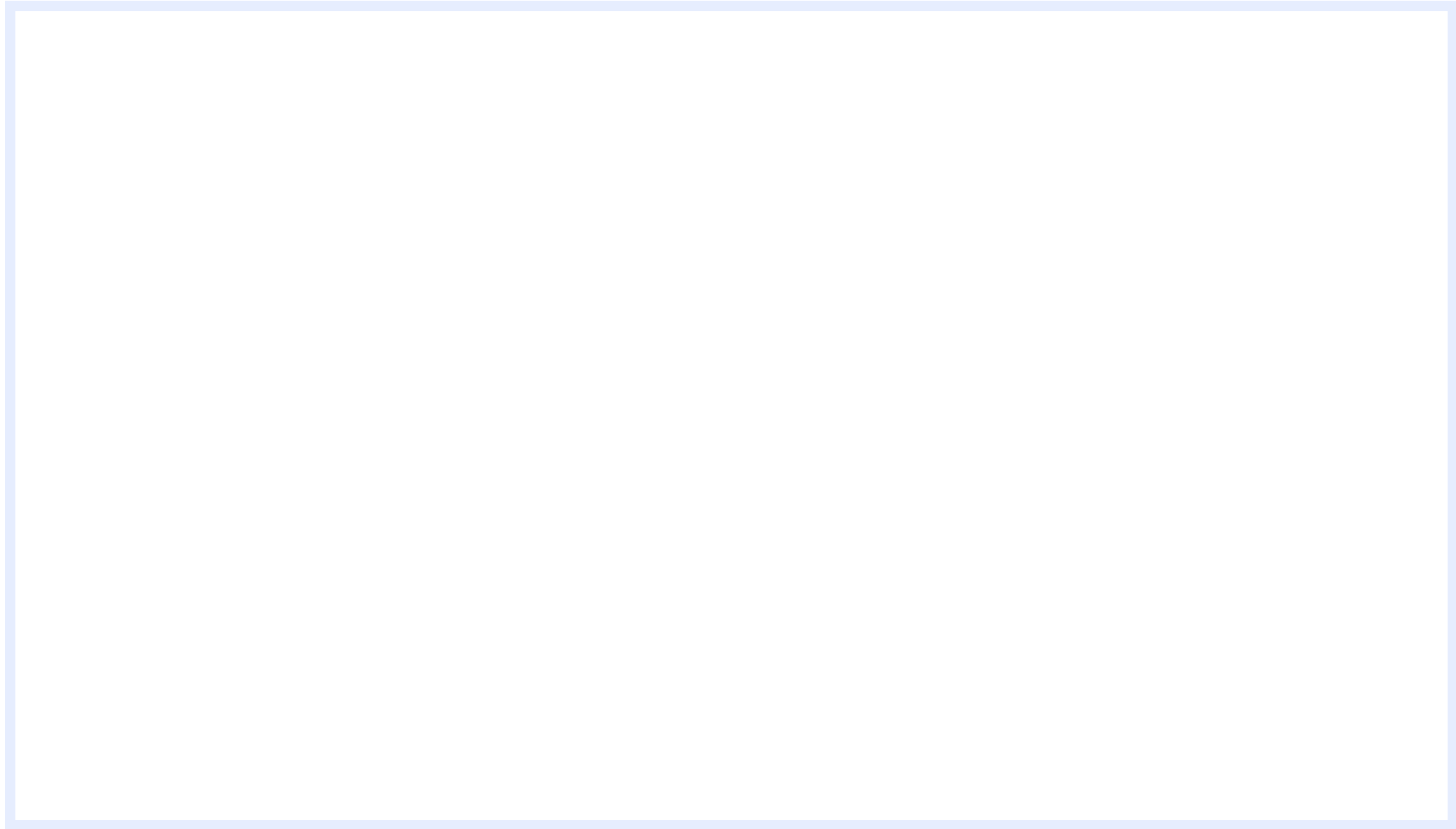


Total Area: 109.7 m² ... 1181 ft²

All measurements are approximate and for display purposes only







www.mitchells.uk.com
Mundeford@mitchells.uk.com
01202 499295

Mundeford
112-114 Cambridge House Stanpit
Christchurch
BH23 3ND

