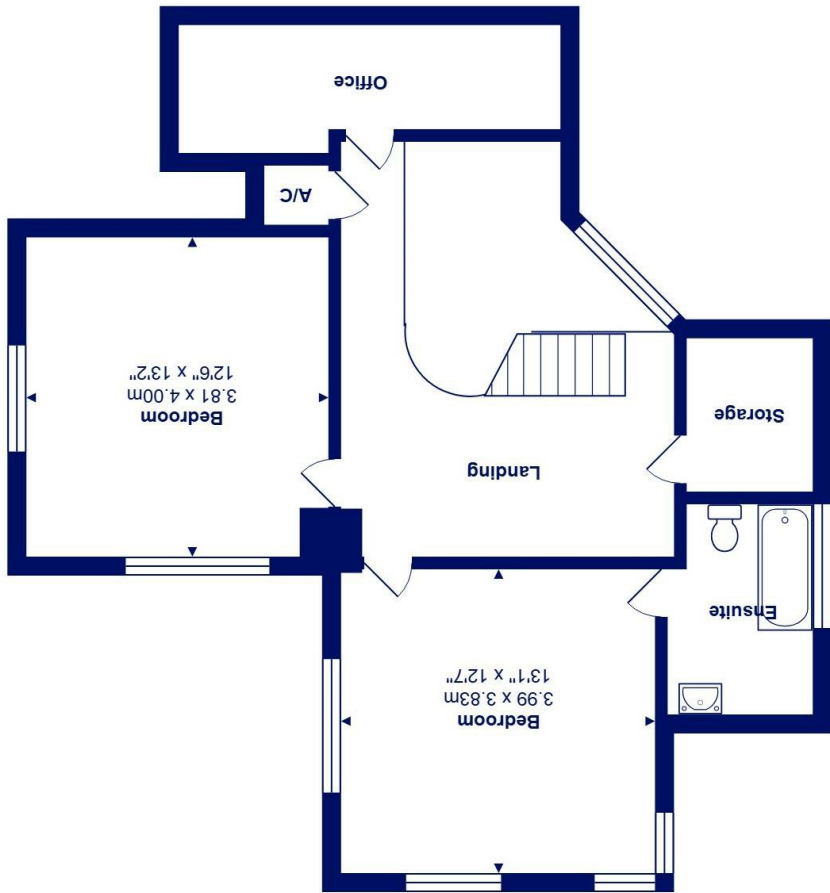




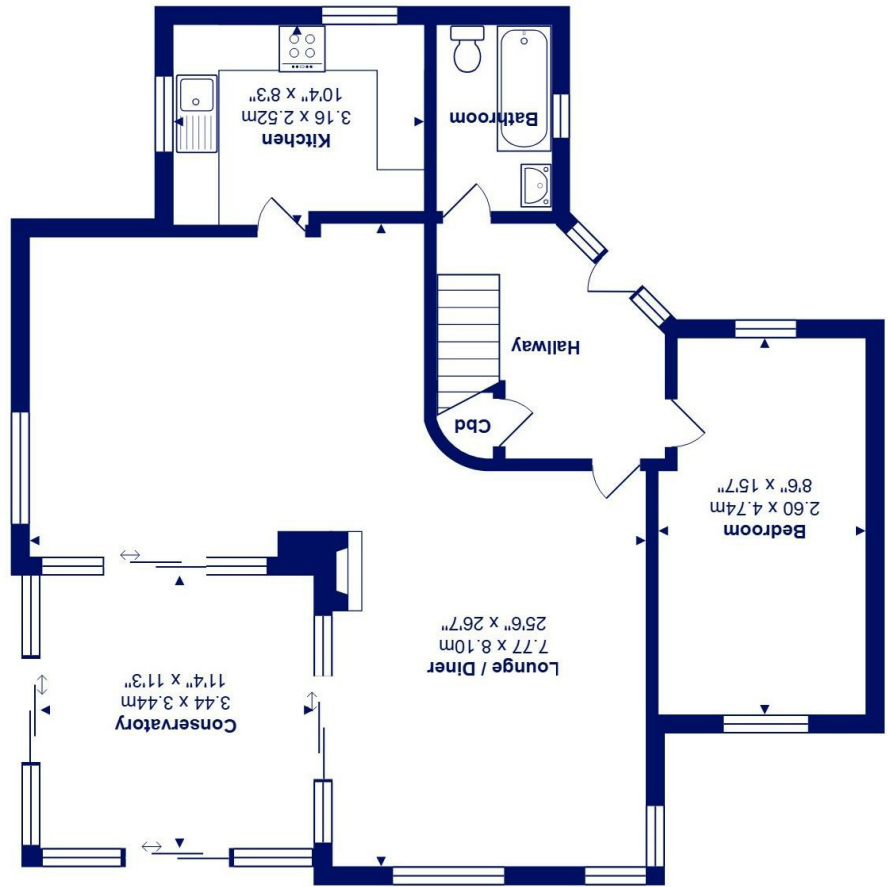
All measurements are approximate and for display purposes only  
Total Area: 154.1 m<sup>2</sup> ... 1659 ft<sup>2</sup>



First Floor



Ground Floor



34 Southcliffe Road, Friars Cliff, BH23 4EW

£2,000,000

**Mitchells**  
1963 — TODAY

“A once in a lifetime opportunity”. A truly amazing BEACH FRONT residence with 180 degree panoramic sea and coastal views over the whole of Christchurch Bay, from Milford and Hurst Castle in the east along to Avon Beach, Mudeford Quay and Harbour plus Hengistbury Head to the west. And across the Bay to the Isle of Wight and the Needles Rocks!

WHAT A LOCATION..... IT REALLY DOESN'T GET MUCH BETTER THAN THIS!

This property has been in the current family since the 1950s. There is obviously plenty of scope and potential to improve/remodel the current dwelling (STPP) which was built in the 1990s to a “Cheshire Robbins” design to replace the old “Chauffeur’s Cottage” to what was the big house next door. Just imagine an Art Deco or Modernist style property with a roof terrace on this plot?

- An amazing beach front residence of about 1660 sqft
- We don't believe there is another property in a similar location anywhere close by!
- The views are truly stunning and must be seen to be fully appreciated
- Incredibly light and airy versatile accommodation
- Sea and coastal views from every room bar GF bathroom!
- Beautiful mainly lawned gardens, extending to the beach huts
- Off road parking for 3, possibly 4 cars or similar
- Lovely beach and seafront walks literally on your doorstep
- Mudeford Quay is moments away with historic pub, sailing club and ferry to the Sandbank
- No forward chain

EPC Rating Band: D  
Council Tax Band: G  
Freehold

Successful buyers will be required to complete online identity checks provided by Lifetime Legal. The cost of these checks is £45 inc. VAT per purchase which is paid in advance, directly to Lifetime Legal. This check verifies your identity in line with our obligations as stipulated by our regulatory body, HMRC

