



20 Maundeville Road, Christchurch BH23 2EN

£585,000

Mitchells

1963 — TODAY



Maundeville Road, Christchurch

A gorgeous, double fronted 1930s character house of approaching 1400 sqft, beautifully appointed inside and out with stylish fittings. Also featuring a fabulous large, well fitted kitchen / dining / family room overlooking the rear garden.

Situated in this lovely quiet road in a sought after part of the old Priory town of Christchurch with the large open park and riverside just moments away. Local shops, schools, pubs and other amenities are also close by.



The Property

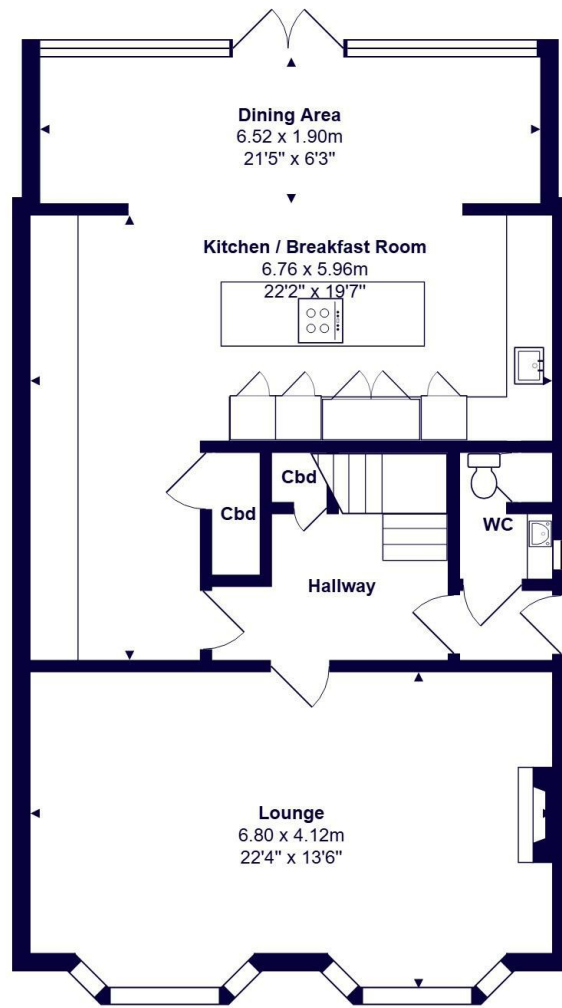
- Immaculate detached home in West Christchurch
- Three first floor bedrooms
- Refitted bathroom with quality fittings
- Stunning light and airy sitting room with two feature bay windows at the front
- Wonderfully spacious kitchen/dining/living room with access to the garden
- Well enclosed rear garden with useful garden shed
- Gas central heating and UPVC double glazing
- Plenty of off road parking
- Local shops close by along with riverside walks, open space and easy access to Christchurch



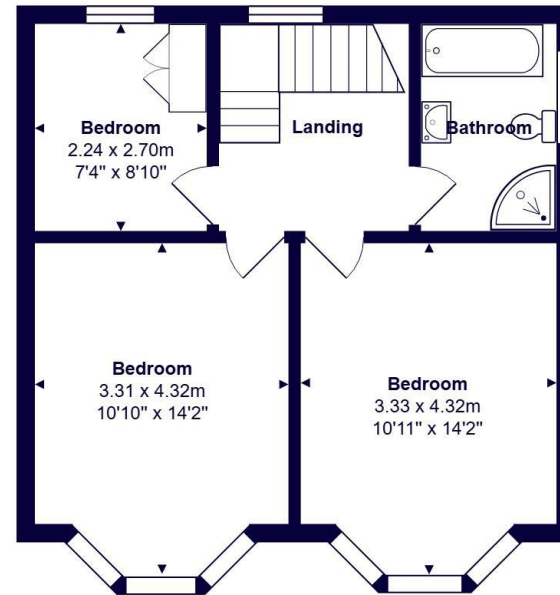


Location





Ground Floor



First Floor



Total Area: 126.9 m² ... 1366 ft²
All measurements are approximate and for display purposes only







www.mitchells.uk.com
Mundeford@mitchells.uk.com
01202 499295

Mundeford
112-114 Cambridge House Stanpit
Christchurch
BH23 3ND

