



*29, Barton Cliff, Barton On Sea, New Milton, BH25 7DU*

*£25,000*

**Mitchells**  
1963 — TODAY

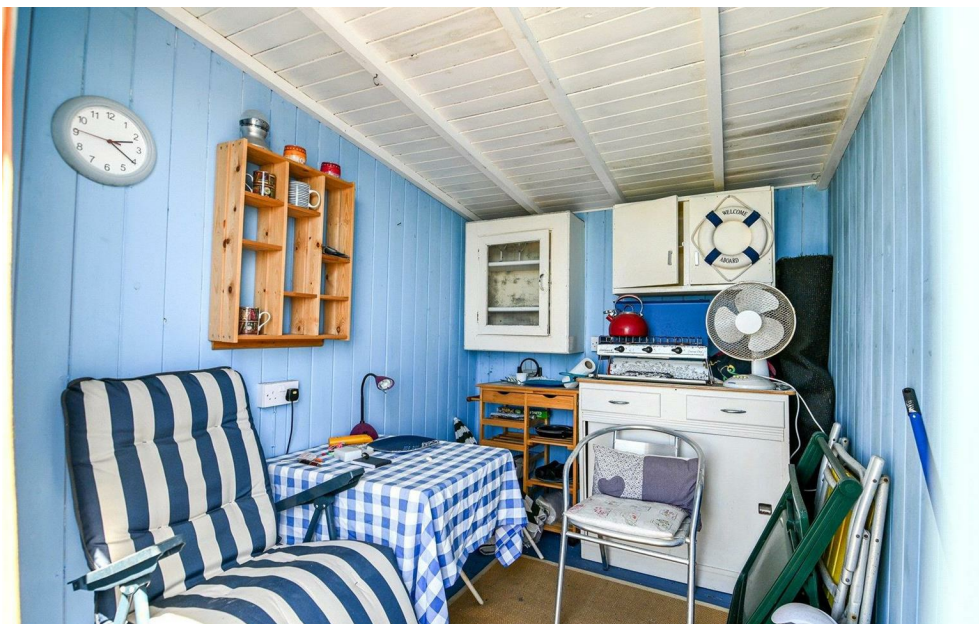
*29 Barton Cliff  
Barton On Sea  
New Milton  
Hampshire  
BH25 7DU*

This lovely beach hut has been recently upgraded and features panoramic sea views stretching from the Needles on the Isle of Wight to Old Harry Rocks.

- Recently Upgraded
- Storage
- Panoramic Sea Views

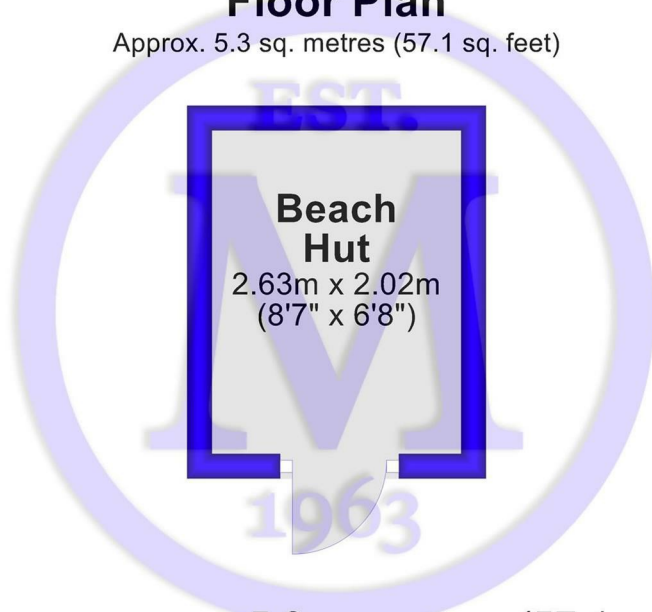
## *The Property*

This lovely beach hut has been very well maintained, with features including storage unit shelving and fantastic sea views.



## Floor Plan

Approx. 5.3 sq. metres (57.1 sq. feet)



Total area: approx. 5.3 sq. metres (57.1 sq. feet)

## Services

Mains gas, electricity, water and drainage

Council Tax Band:

Energy Performance Certificate (EPC) Rating:

## Situation

Barton on Sea, a charming suburb of New Milton, enjoys a prime location along a picturesque stretch of the Solent coastline. With sweeping views across Christchurch Bay to the Isle of Wight and access to stunning coastal walks in both directions, it's a haven for nature lovers and outdoor enthusiasts. Its popularity is further enhanced by proximity to the open landscapes of the New Forest National Park, direct mainline rail links to London Waterloo, and a range of high-quality amenities. These include excellent schools, fine dining at the renowned Chewton Glen Hotel and Pebble Beach restaurant, and a 27-hole links-style golf course. Offering a perfect blend of natural beauty, convenience, and luxury, Barton on Sea continues to attract those seeking an exceptional coastal lifestyle.

