

An aerial photograph of a residential neighborhood, likely Barton on Sea, is shown with a semi-transparent blue overlay. The houses and streets are visible through the blue tint. The text is centered over the image.

New Build Coming Soon!

Flat 3, 28 Seaward Avenue, Barton on Sea, BH25 7HP

£320,000

Mitchells

1963 — TODAY

*Flat 3 28 Seaward
Avenue
Barton on Sea
New Milton
Hampshire
BH25 7HP*

A rare and exciting opportunity to purchase this brand new bungalow style property, situated in a quiet residential location close to the Barton on Sea clifftop and beach. The property benefits from high specification, single storey living and would suit a range of buyers, from holiday let investors to anyone looking for their perfect retirement move. Other features include a separate kitchen, an en-suite to the bedroom, a sitting room with doors opening onto the private rear garden, and a separate utility room.

- High Specification New Build
- Kitchen
- Sitting Room
- Separate Utility Room
- Large Bedroom
- En-Suite Shower Room
- Private Rear Garden
- Off Road Parking
- Long Lease
- Target Completion January 2026

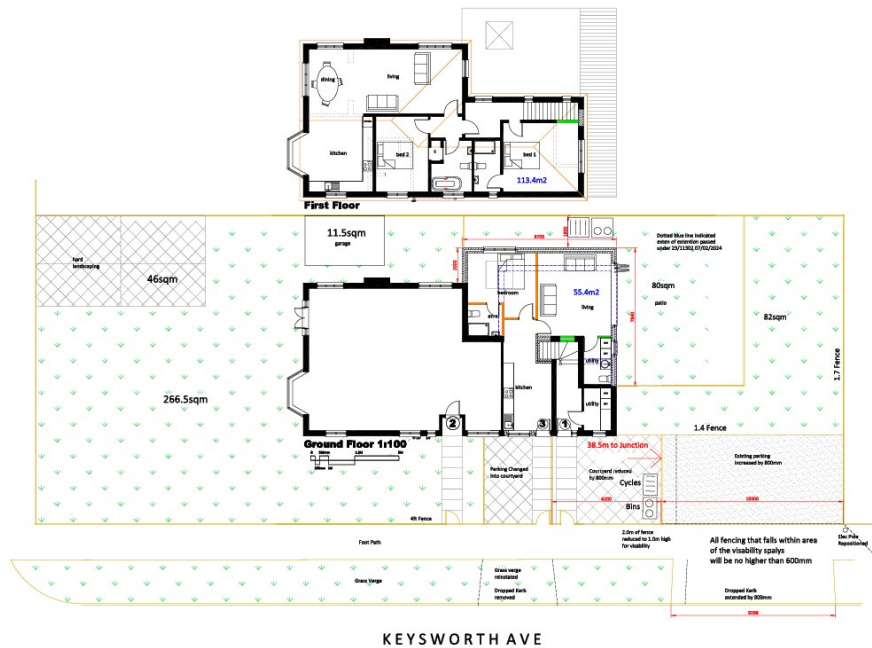
The Property

Kitchen with modern, contemporary wall and base units, integrated premium brand appliances, solid quartz worktop and splashback, natural stone or porcelain flooring with zoned underfloor heating.

Sitting room with ample space for furniture and bi-fold doors onto the private rear garden.

Large double bedroom with outlook to the side.

Bathroom fitted with floor to ceiling contemporary porcelain tiling and underfloor heating. Shower enclosure to include a Crittall style black shower screen, stone resin shower tray, concealed thermostatic shower valves and waterfall shower head. Also features a black contemporary towel rail, modern concealed cistern WC, and two drawer wall hung vanity unit with basin.



Gardens & Grounds

28 Seaward Avenue is a unique development comprising three apartments, all benefitting from allocated parking, private entrances, and private gardens.

Apartment 3 will have a parking space directly in front of the property, along with a private rear garden.

Services

Mains gas, electricity, water and drainage

Council Tax Band:

Energy Performance Certificate (EPC) Rating:

Situation

Barton on Sea, a charming suburb of New Milton, enjoys a prime location along a picturesque stretch of the Solent coastline. With sweeping views across Christchurch Bay to the Isle of Wight and access to stunning coastal walks in both directions, it's a haven for nature lovers and outdoor enthusiasts. Its popularity is further enhanced by proximity to the open landscapes of the New Forest National Park, direct mainline rail links to London Waterloo, and a range of high-quality amenities. These include excellent schools, fine dining at the renowned Chewton Glen Hotel and Pebble Beach restaurant, and a 27-hole links-style golf course. Offering a perfect blend of natural beauty, convenience, and luxury, Barton on Sea continues to attract those seeking an exceptional coastal lifestyle.

