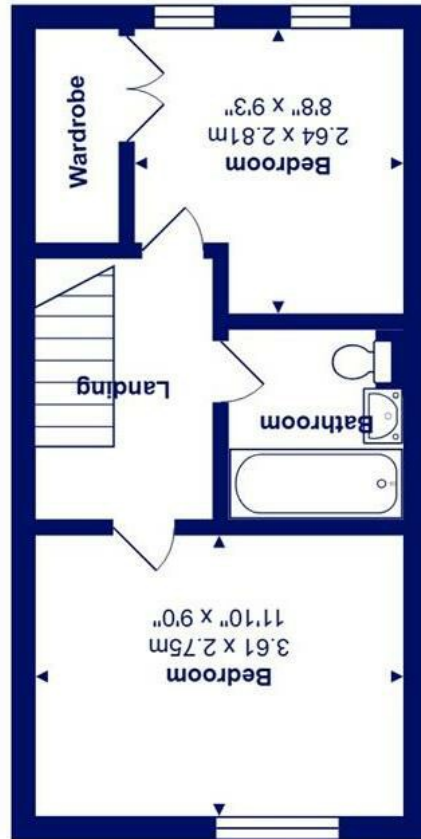




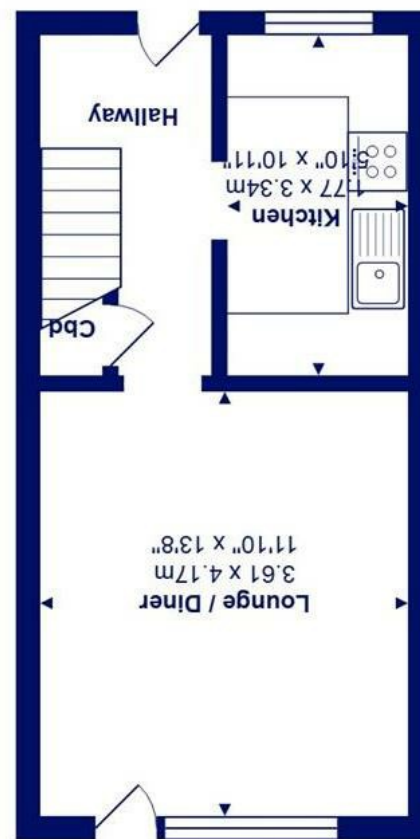
All measurements are approximate and for display purposes only
Total Area: 55.6 m² ... 598 ft²



First Floor



Ground Floor



77 Rodney Drive, Mudeford, BH23 3LL

£299,950

Mitchells
1963 — TODAY

A delightful mid-terrace, two double bedroom property situated in the heart of Mundeford with driveway parking and a sunny west facing garden.

- Mid-terrace Freehold house with 600 sq.ft. of accommodation
- Two double bedrooms
- Sitting/dining room with outlook to the garden
- Good sized kitchen
- uPVC double glazing and gas fired central heating
- Family bathroom on the first floor
- West facing rear garden with storage shed
- Driveway parking at the front
- Close to local shops, bus routes and within catchment area of local schools

EPC Rating Band: C
Council Tax Band: C
Freehold

