



23 Chantry Close, Christchurch BH23 5NQ

£500,000

Mitchells

1963 — TODAY

Chantry Close, Christchurch

A stylish and immaculate, semi detached town house being the largest design on the exclusive Latimers Development. The house exudes quality with about 1600sqft of luxuriously appointed living space and has been extensively refurbished in excellent taste in recent years. A very smart example of these Georgian style townhouses.



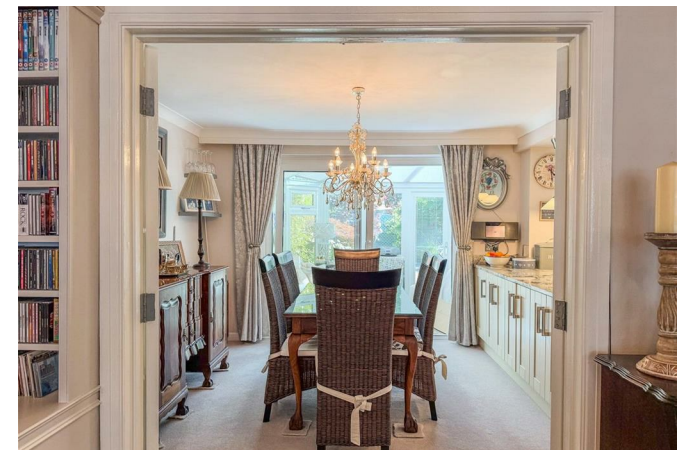
The Property

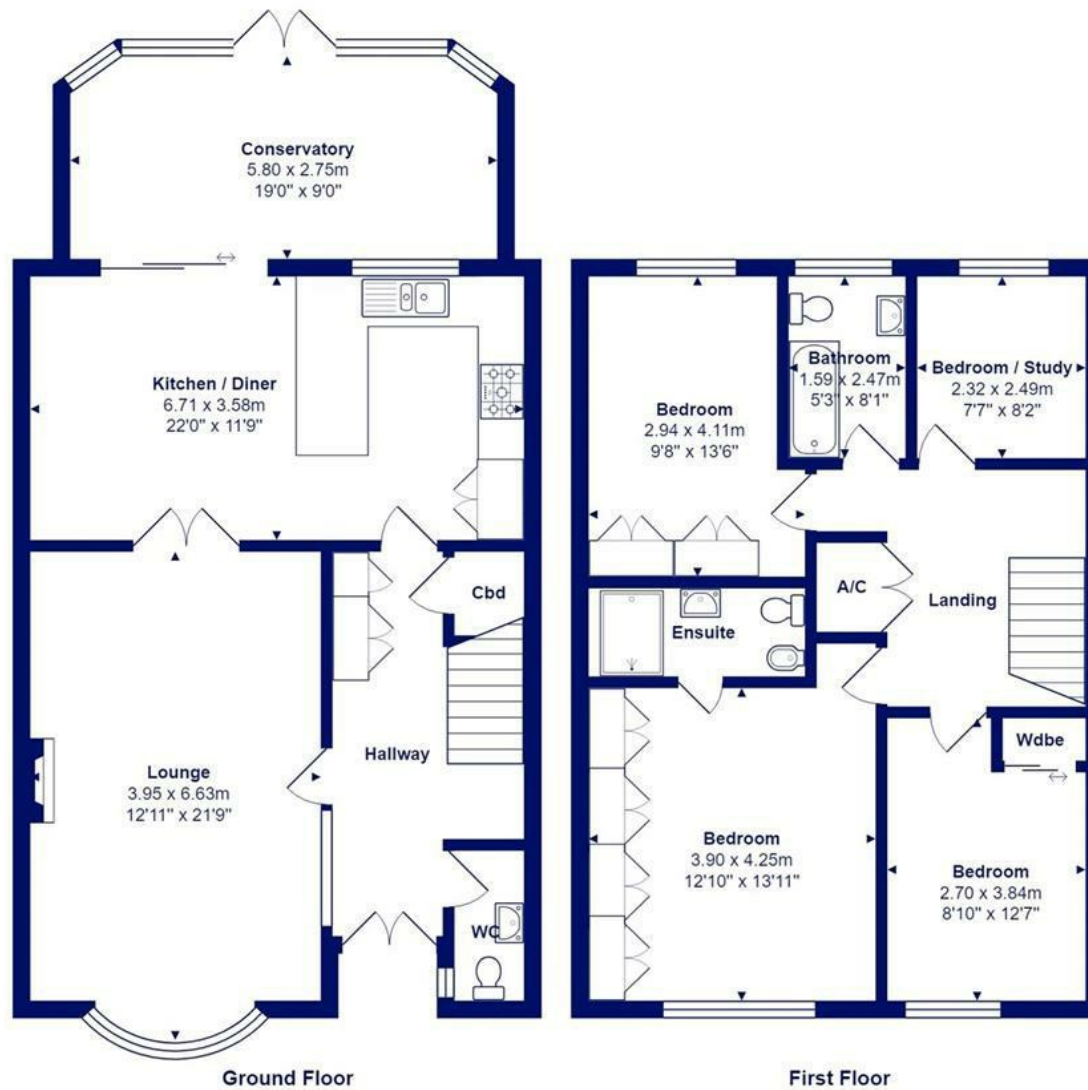
- Fabulous home with the 'wow' factor set in parklike gardens
- Impressive entrance with porcelain tiled floor and an oak/glass staircase
- Superb master bedroom with fitted wardrobes and luxury en-suite
- Spacious sitting room with bay window and bespoke bookshelves/TV cabinetry
- Quality open plan kitchen/dining room with a high end kitchen cabinetry, granite worktops, Bosch appliances and porcelain tiled floor
- Gas fired central heating with underfloor heating to the hall, wc, kitchen, both bath/shower rooms and conservatory, UPVC double glazed windows
- Plantation style shutters and venetian blinds to the windows
- Colourful garden with all day sunshine, gorgeous sun terrace, casual parking and a garage nearby
- Council Tax





Location

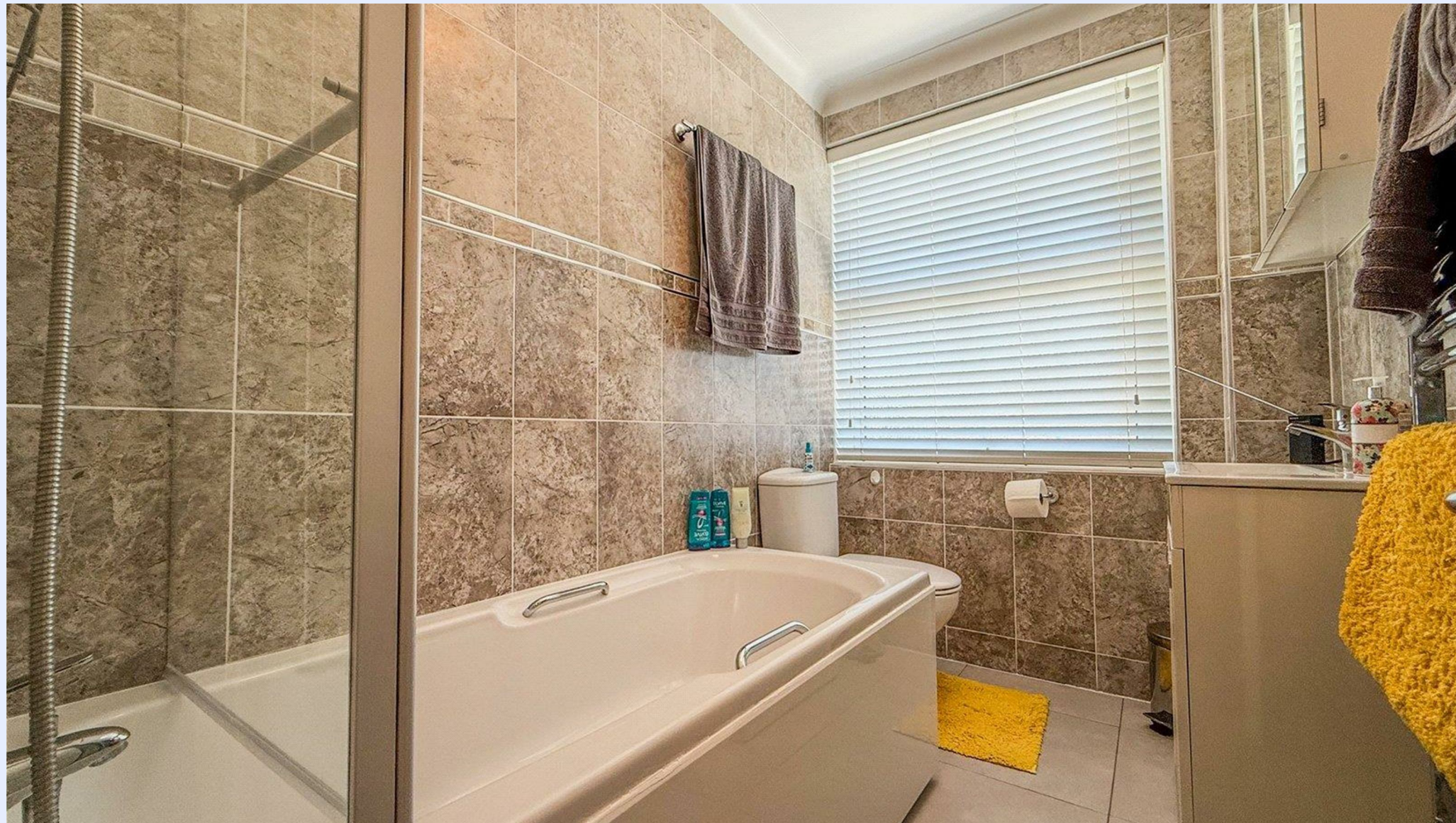




Total Area: 148.7 m² ... 1601 ft²
 All measurements are approximate and for display purposes only







www.mitchells.uk.com
Highcliffe@mitchells.uk.com
01425 272206

Highcliffe
284 Lymington Road
Highcliffe
Christchurch
BH23 5ET

