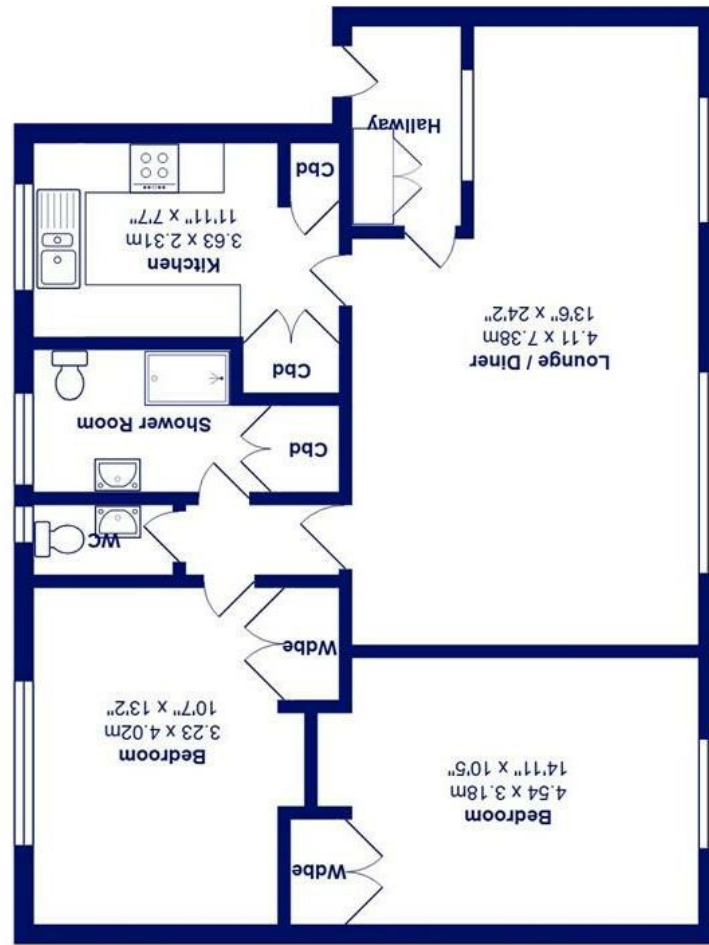


All measurements are approximate and for display purposes only



Total Area: 79.4 m² ... 855 ft²



24 High Pines, St Georges Close, BH23 4LN

£239,000

Mitchells
1963 — TODAY

A well presented ground floor flat with a lovely west facing, raised balcony, offered for sale with no forward chain and an extended lease. The accommodation extends to about 860 sq ft with a spacious living room and two double bedrooms. Quick possession available.

- Purpose built, ground floor flat of about 860 sq ft
- Two spacious double bedrooms both with fitted wardrobes
- West facing living room with access to the raised balcony
- Shower room with w/c and separate w/c
- Modern kitchen and electric heating
- Access to the communal gardens
- Lease- about 135 years remaining, expires 24th Dec 2160, service charge £1980.44 p.a, ground rent £150 p.a.
- No forward chain

EPC Rating Band: D
Council Tax Band: C
Leasehold

