



42 Rothesay Drive, Christchurch BH23 4LD

£895,000

Mitchells

1963 — TODAY



Rothesay Drive, Christchurch

Situated in Rothesay Drive with views of Highcliffe Castle and backing onto the golf course is this lovely, 'cottage style' chalet of about 1900sqft. Immaculate inside and with fabulous ground floor living space, this super home is enviably situated and offered for sale with no forward chain. The access to the beach is via Highcliffe Castle grounds which also gives access to Steamer Point Nature Reserve and Friars Cliff Beach.



The Property

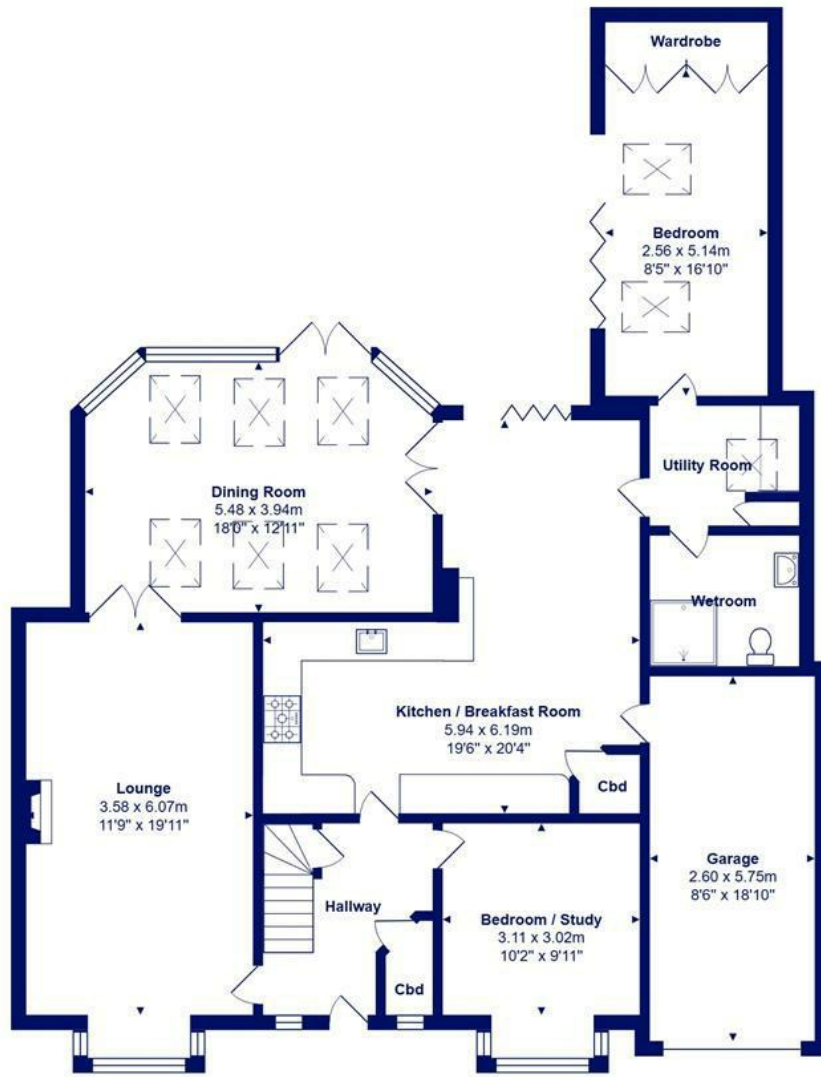
- Attractive external elevations with an eye-brow dormer window to the front
- Three double first floor bedrooms with two bath/shower rooms (one-ensuite)
- Spacious sitting room with open fireplace
- Smart fitted kitchen with integrated appliances, quartz worktops and an open plan living area
- Gorgeous dining/garden room with vaulted ceiling, exposed beams and large windows looking down towards the golf course
- Ground floor bedroom with vaulted ceiling that could easily be an additional reception room
- Integral garage and utility room
- Wonderful mature garden with extensive terracing and all day sunshine
- Great location just moments from the beach and village centre





Location





Total Area: 176.9 m² ... 1904 ft² (excluding garage)
 All measurements are approximate and for display purposes only







www.mitchells.uk.com
Highcliffe@mitchells.uk.com
01425 272206

Highcliffe
284 Lymington Road
Highcliffe
Christchurch
BH23 5ET

