

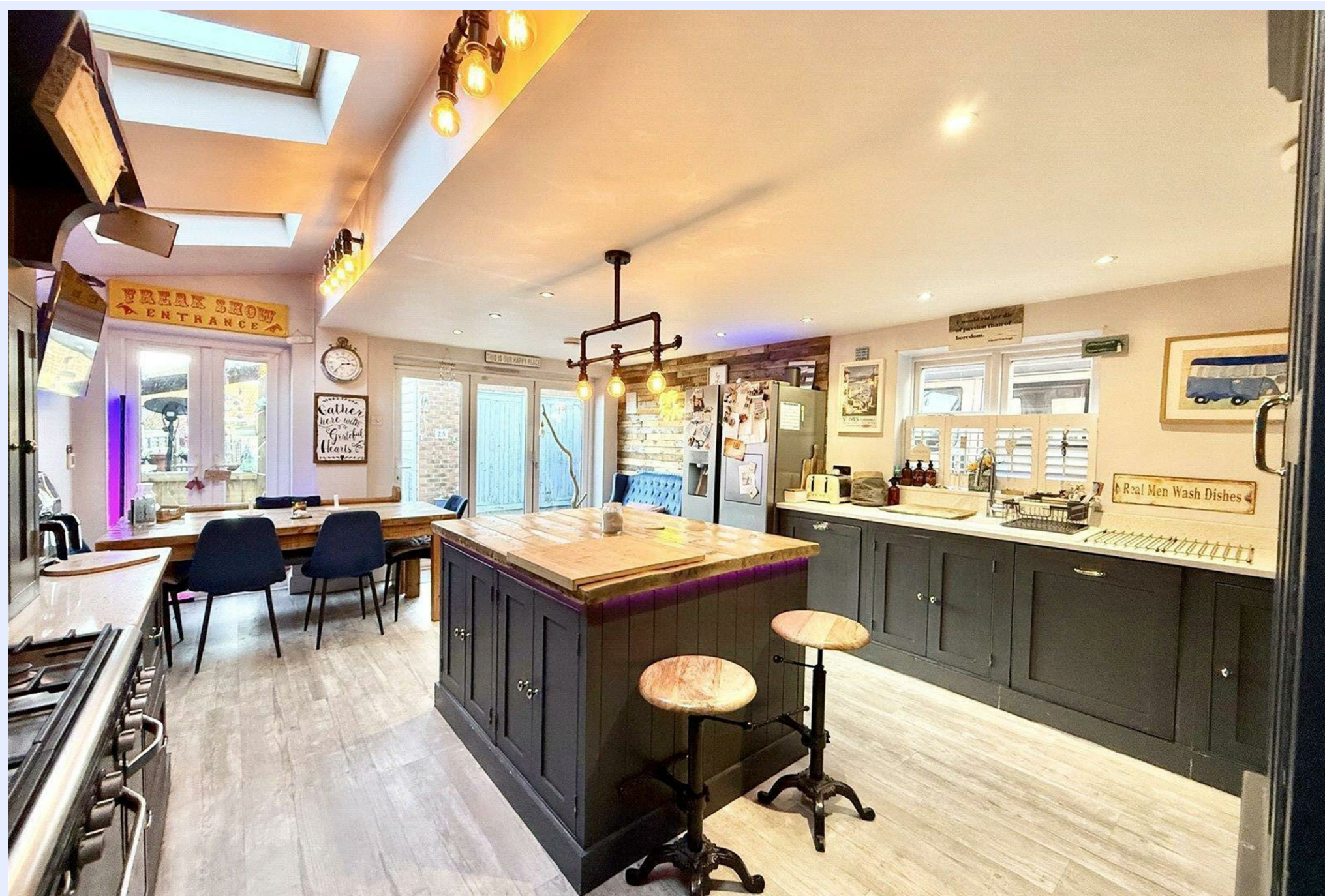


25 Gordon Road, Christchurch BH23 5HN

£569,950

Mitchells

1963 — TODAY



Gordon Road, Christchurch

An attractive and extended Victorian semi-detached family residence enviably positioned in the very heart of Highcliffe-on-Sea, moments from the town centre, clifftop and beach.

This impressive four bedroom, four bathroom (three en-suite & a GF shower/utility room) home combines period charm with high-quality contemporary living, centred around a striking partially vaulted kitchen and living space. Designed for modern family life and entertaining, the space features a bespoke handmade kitchen and an abundance of natural light, creating a superb focal point to the home. Outside the property benefits from off-road parking and a selection of useful powered outbuildings, ideal for storage, a home office or studio.



The Property

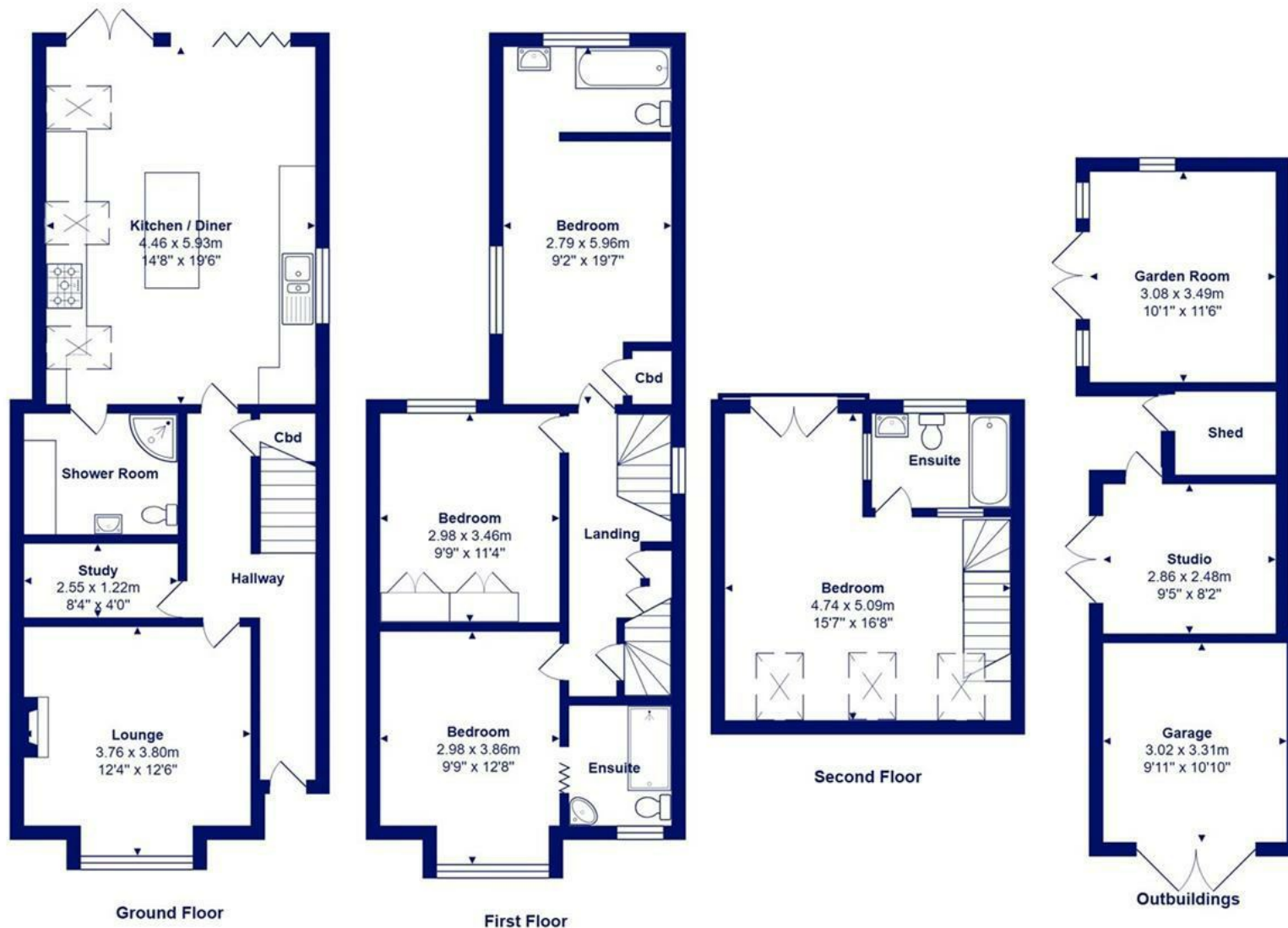
- Extended character family home
- Four bedrooms
- Four bath/shower rooms (three en-suite & one GF shower/utility room)
- Large master suite with Juliette balcony
- Stunning partially vaulted bespoke kitchen/living space
- Formal sitting room
- Separate study
- Prime town centre and coastal position
- Large garden approx. 80ft in length
- Off-road parking





Location

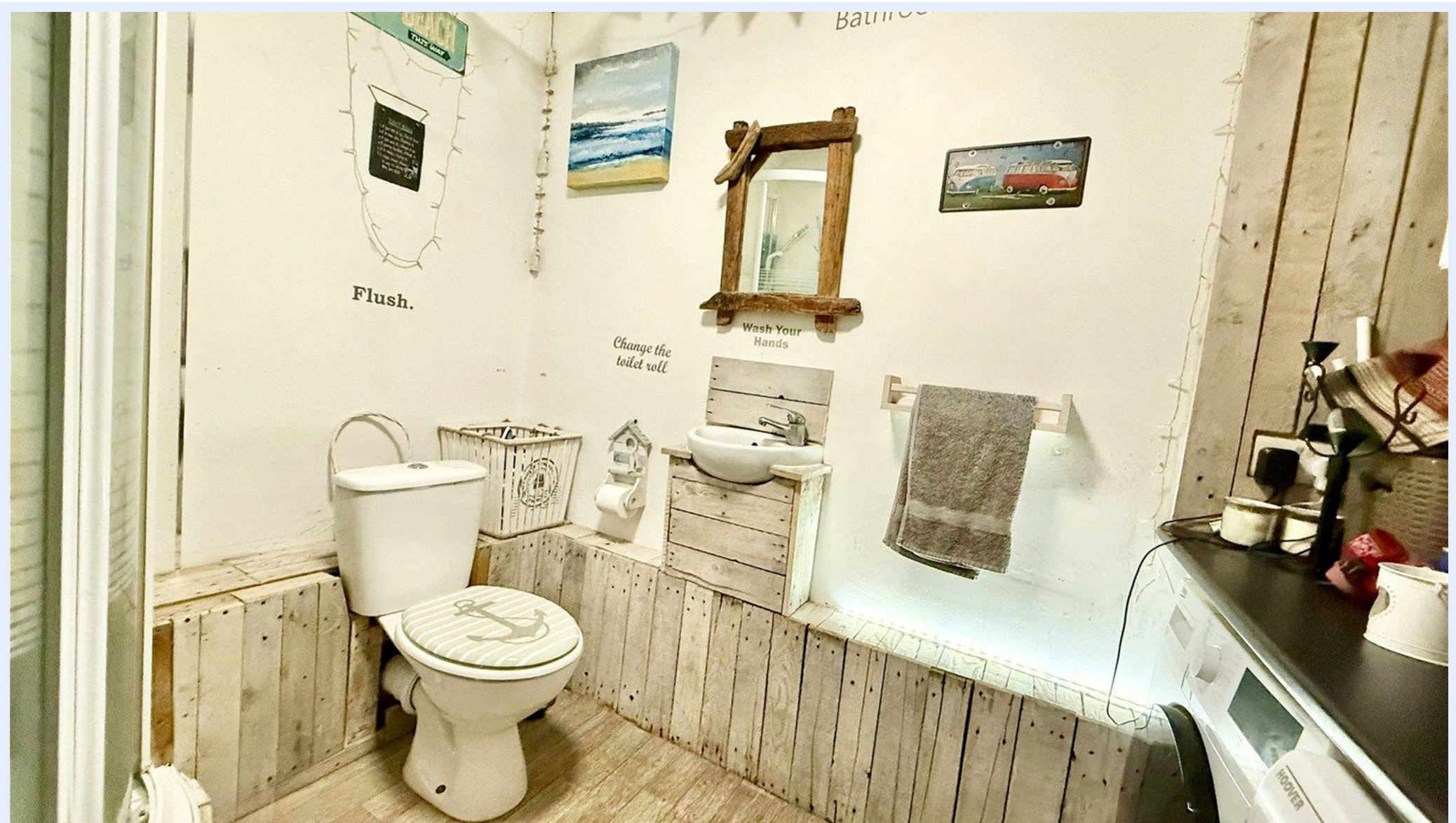




Total Area: 135.7 m² ... 1461 ft² (excluding outbuildings)
 All measurements are approximate and for display purposes only







www.mitchells.uk.com
Highcliffe@mitchells.uk.com
01425 272206

Highcliffe
284 Lymington Road
Highcliffe
Christchurch
BH23 5ET

