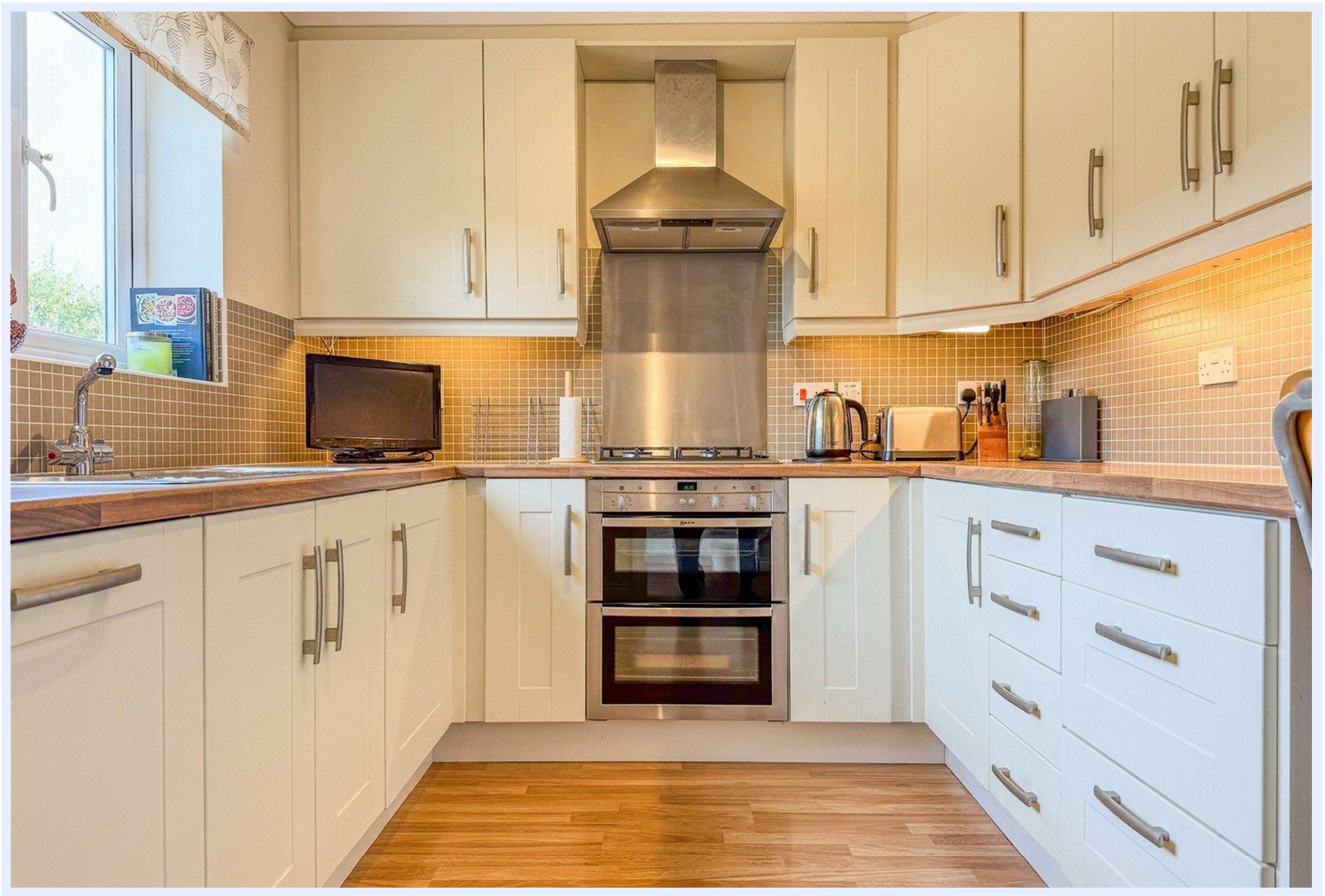




2 Cornflower Drive, Christchurch BH23 4UH

£459,950

Mitchells
1963 — TODAY



Cornflower Drive, Christchurch

A very smart semi-detached house of about 975sqft on the highly acclaimed Hoburne Farm Development with modern fittings spacious rooms and a larger than average garden. The house has been very well looked after and is offered for sale with no forward chain.



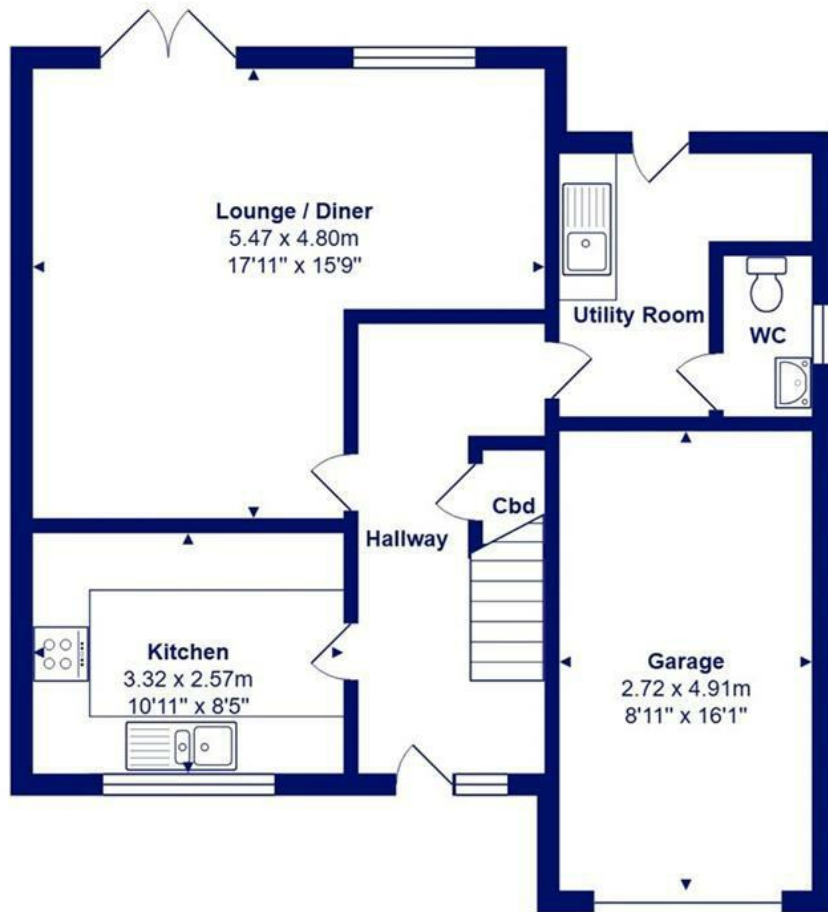
The Property

- Traditionally built semi-detached house in the Highcliffe Schools catchment area
- Three good sized bedrooms, two with fitted wardrobes
- Spacious lounge dining room with access onto the garden
- Modern fitted kitchen with separate utility room
- Fully tiled family bathroom and downstairs wc
- Gas fired central heating, UPVC double glazed windows, integral garage and off-road parking
- Walking distance of Saulfland shops, bus stop and Friars Cliff beach
- Offered for sale with no forward chain
- Council Tax

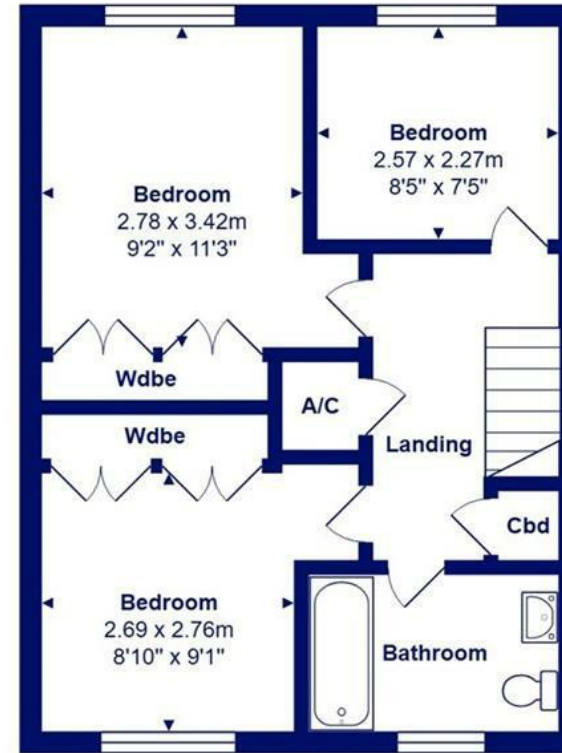




Location



Ground Floor



First Floor



Total Area: 90.7 m² ... 976 ft² (excluding garage)

All measurements are approximate and for display purposes only







www.mitchells.uk.com
Highcliffe@mitchells.uk.com
01425 272206

Highcliffe
284 Lymington Road
Highcliffe
Christchurch
BH23 5ET

