

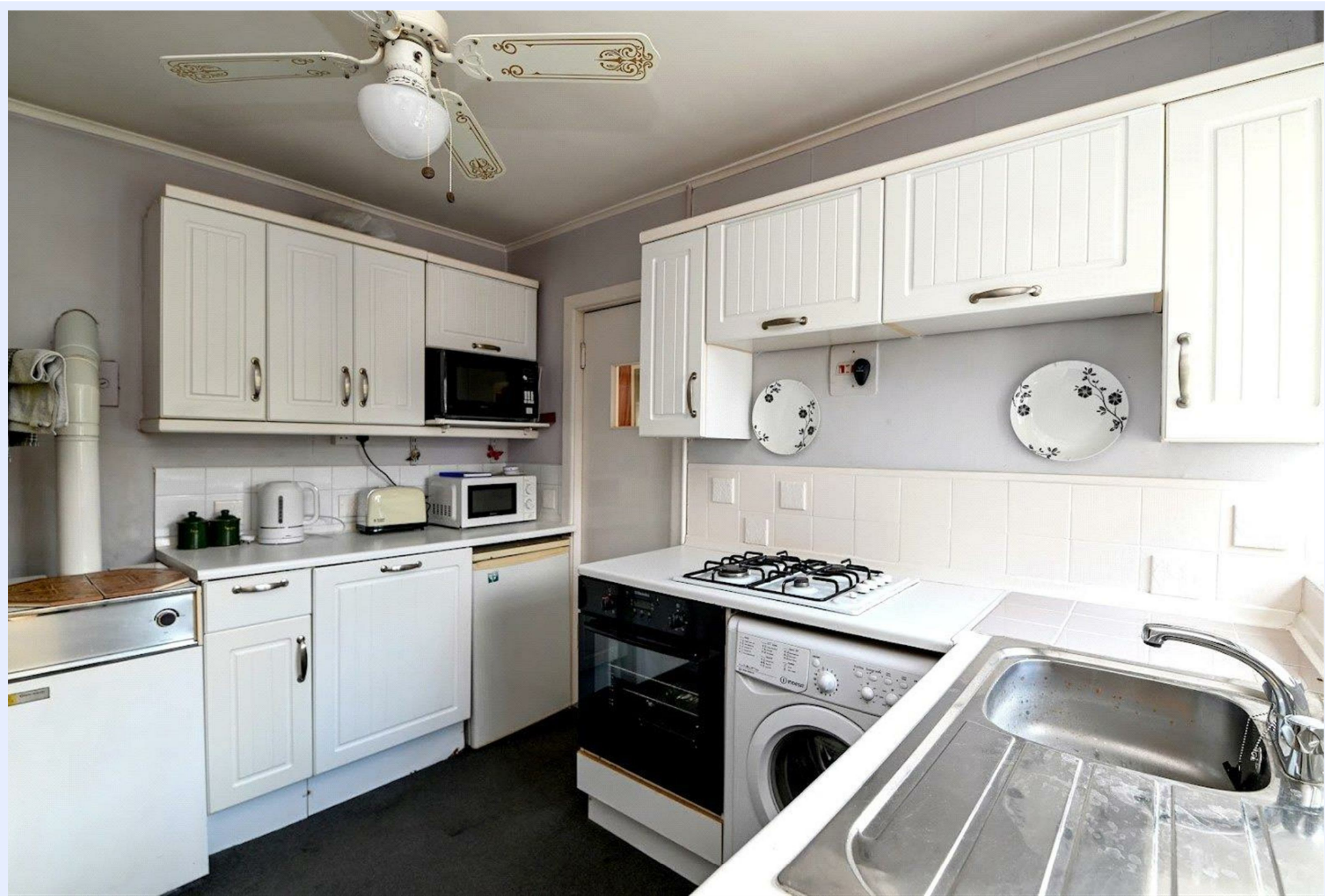


17 Holmhurst Avenue, Christchurch BH23 5PG

£479,950

Mitchells

1963 — TODAY



Holmhurst Avenue, Christchurch

A well-positioned, two double bedroom, two reception room detached bungalow situated on a prominent corner plot on the sought after Holmhurst development.



The Property

- Entrance porch with tiled flooring and a door through to the garage.
- Entrance hall with access to the roof space, an airing cupboard, and a separate storage cupboard.
- Lovely double aspect sitting room with an outlook over the rear garden.
- Separate dining room with double glazed sliding doors to the outside and a south-facing outlook over the rear garden.
- Conservatory of UPVC double glazed construction with a polycarbonate roof, twin casement doors to the outside, and an outlook over the rear garden.
- Kitchen fitted with a range of white wall and base units, an inset sink unit with mixer tap, integrated electric oven and gas hob, Glow Worm gas fired boiler, part tiled walls, and space for a slimline dishwasher.
- Rear lobby with tiled flooring and a UPVC double glazed door to the rear garden.
- Two double bedrooms, with the master bedroom benefitting from built-in wardrobes.
- Bathroom comprising a panelled bath, WC, wash basin, and tiled walls. Separate cloakroom with a WC and hand basin.
- Council Tax Band



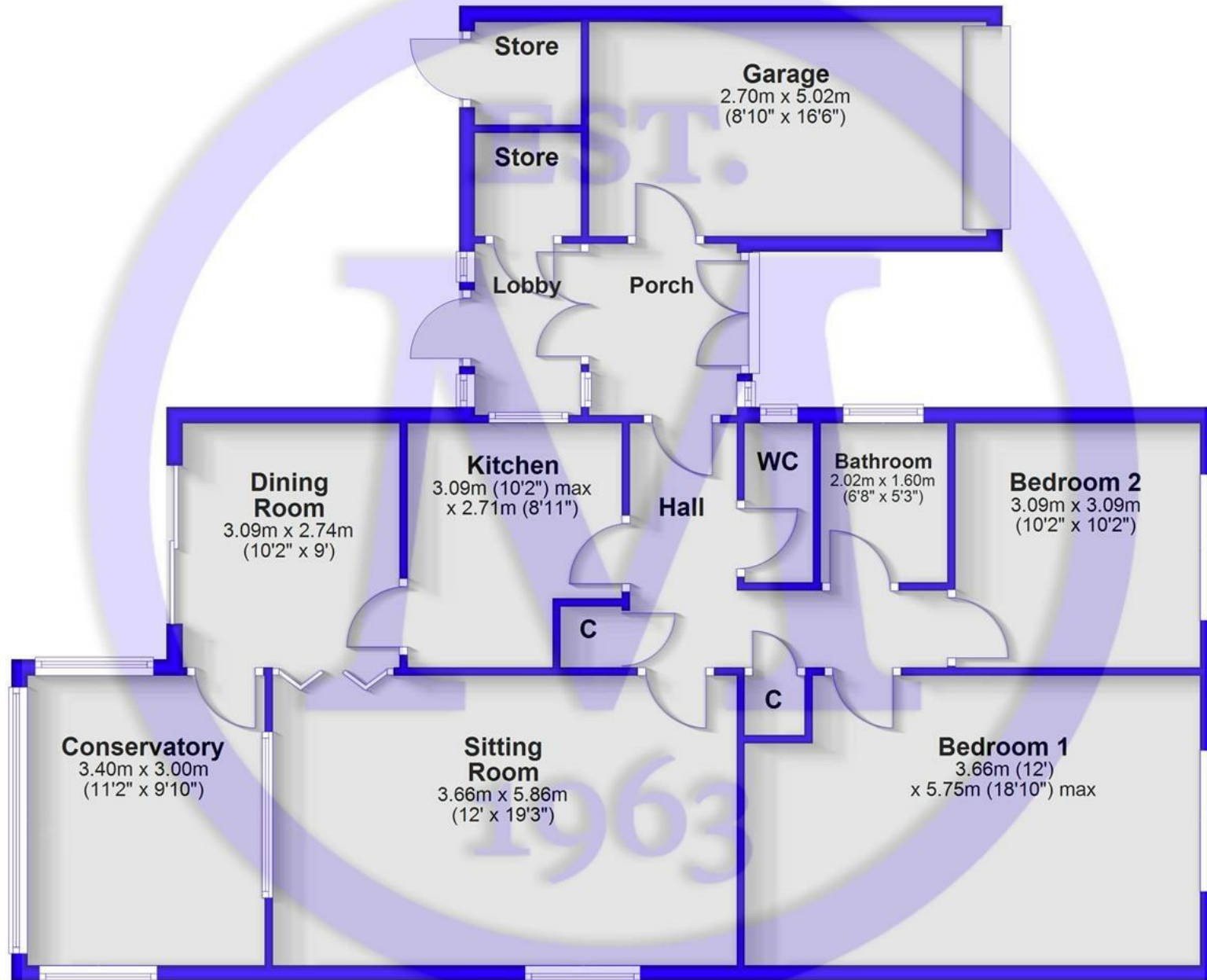


Location



Floor Plan

Approx. 120.4 sq. metres (1296.2 sq. feet)



Total area: approx. 120.4 sq. metres (1296.2 sq. feet)



www.mitchells.uk.com
Highcliffe@mitchells.uk.com
01425 272206

Highcliffe
284 Lymington Road
Highcliffe
Christchurch
BH23 5ET

