



13 Terrington Avenue, Christchurch BH23 4RL

£785,000

Mitchells

1963 — TODAY



Terrington Avenue, Christchurch

A superb four bedroom, two bathroom detached chalet bungalow situated in the highly sought after Terrington Avenue, offering approximately 1,750 sqft of well-planned and versatile accommodation.



The Property

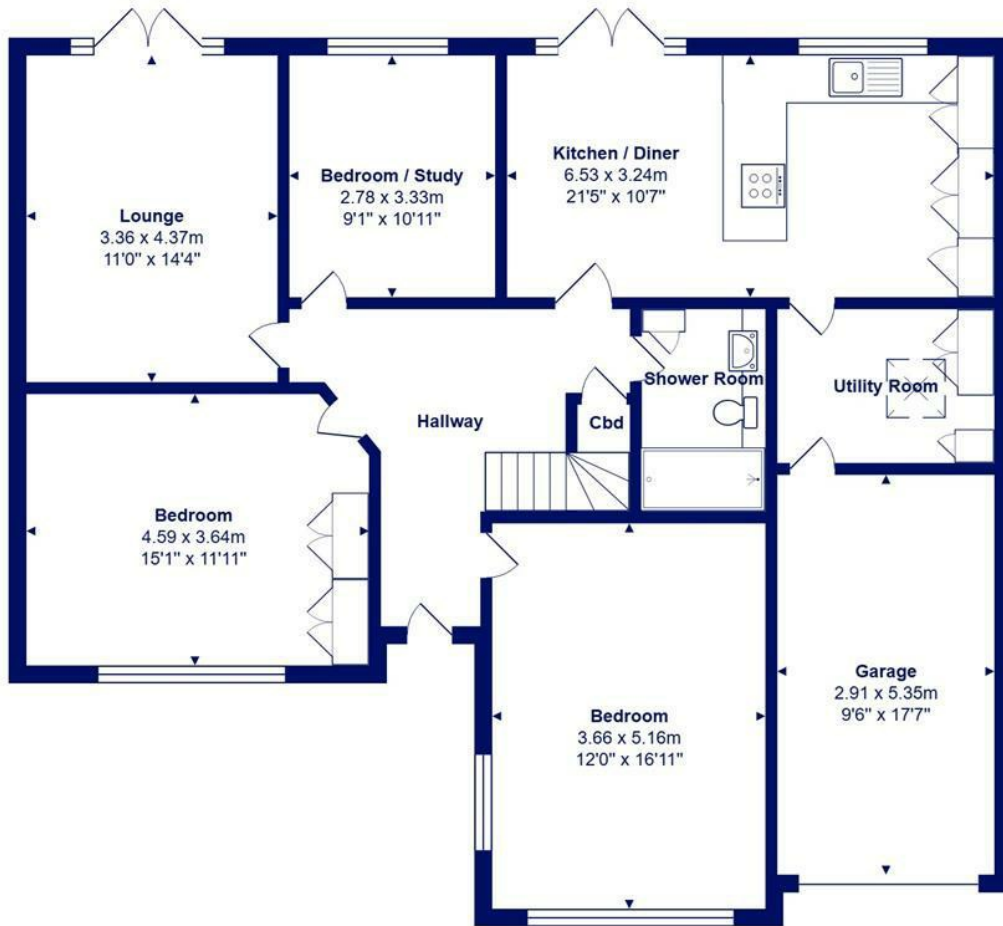
- Four bedroom detached chalet bungalow
- Two bath/shower rooms (one ensuite)
- Top quality modern kitchen/dining room with integrated appliances
- Separate utility room
- Lounge with electric underfloor heating and access onto rear garden
- Good size West-facing rear garden
- 16 Solar panels with 6.3Kwh battery storage with electric car charger (all are included in the sale)
- Integral garage and plenty of off-road parking
- Gas fired heating, UPVC windows, flat plastered ceilings and quality internal doors
- Brilliant location with Wingfields open space nearby, walking distance of Comprehensive schools and train station





Location





Ground Floor



First Floor

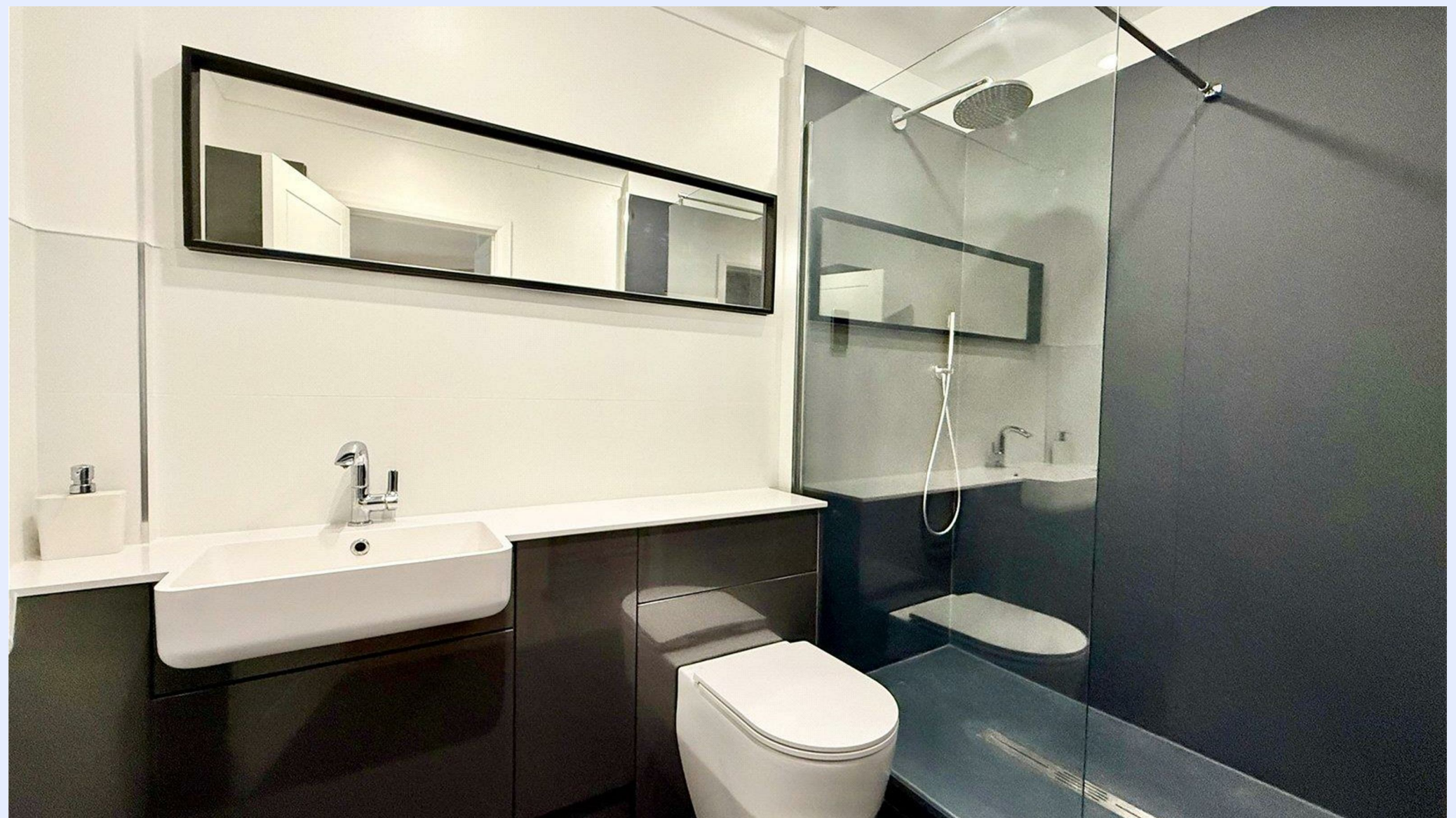


Total Area: 162.2 m² ... 1746 ft² (excluding garage)

All measurements are approximate and for display purposes only







www.mitchells.uk.com
Highcliffe@mitchells.uk.com
01425 272206

Highcliffe
284 Lymington Road
Highcliffe
Christchurch
BH23 5ET

