



7 Curzon Way, Christchurch BH23 4LG

£799,950

Mitchells

1963 — TODAY



Curzon Way, Christchurch

A superb, fully refurbished and extended detached bungalow of quite some style and quality. Located in a lovely quiet location in a no-through road just opposite Highcliffe Golf Course.



The Property

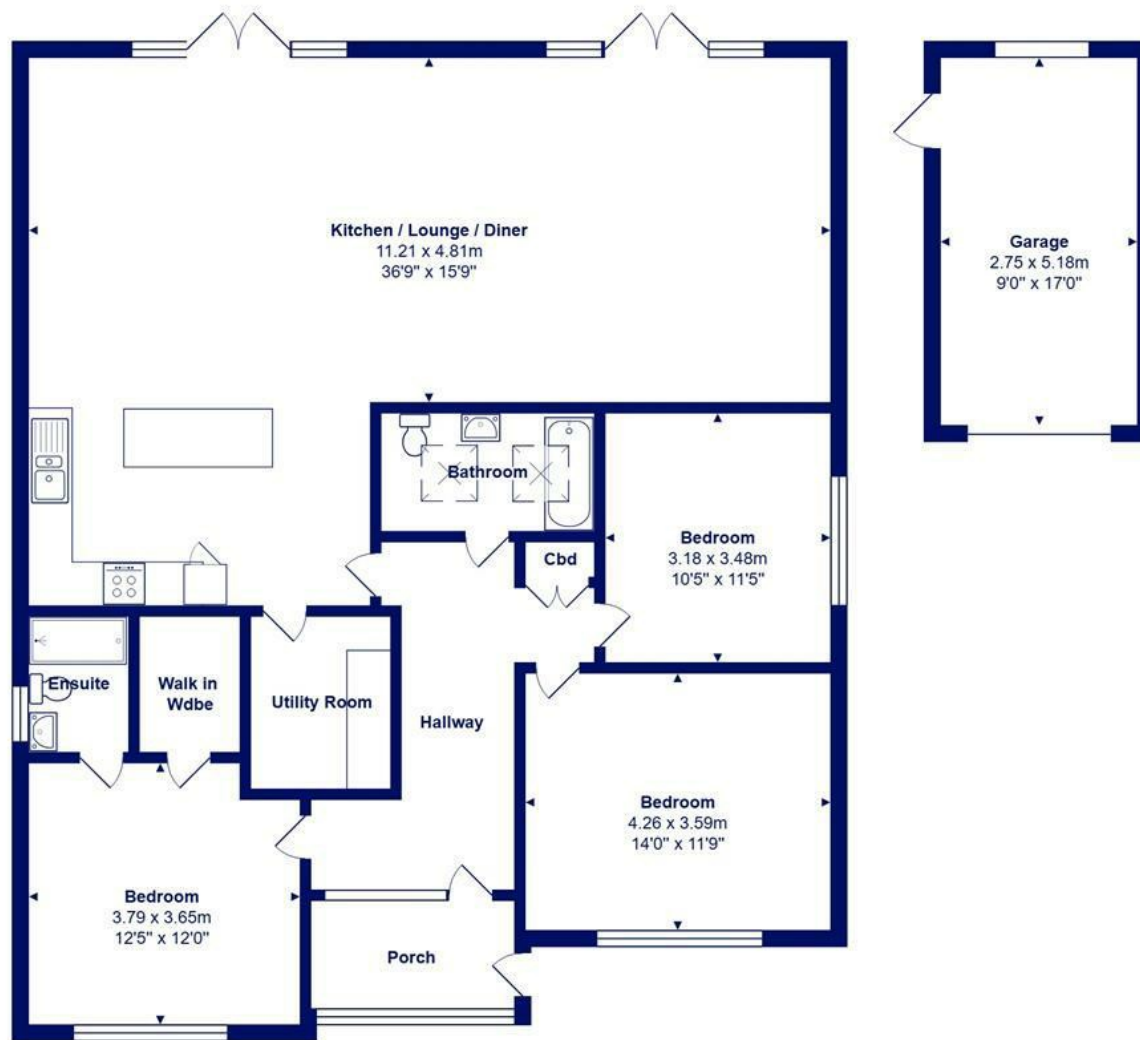
- Excellent location close to Friars Cliff Beach and about one mile to the village centre
- Contemporary kitchen dining living room with some integrated appliances, two sets of patio doors leading to the garden and good size breakfast bar
- Separate Utility room
- Impressive master suite with dressing room and shower room
- Two impressive fully tiled bath/shower rooms
- Front Upvc porch and large entrance hallway
- Sitting on a large wide plot with a private mature garden and ample off road parking to the front of the property
- Detached single garage
- Gas fired Combi boiler
- Council Tax Band





Location



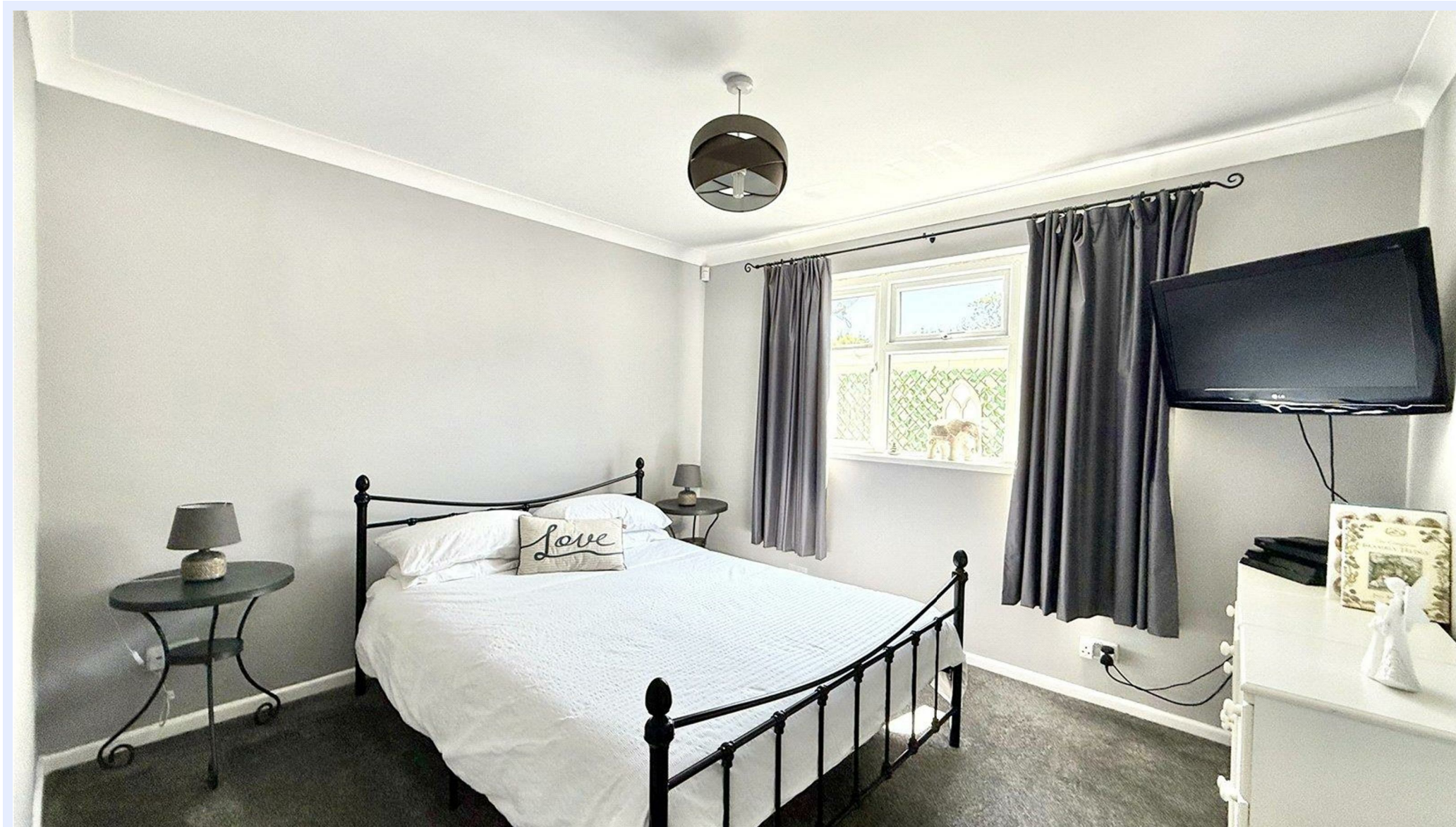


Total Area: 145.0 m² ... 1561 ft² (excluding garage)

All measurements are approximate and for display purposes only







www.mitchells.uk.com
Highcliffe@mitchells.uk.com
01425 272206

Highcliffe
284 Lymington Road
Highcliffe
Christchurch
BH23 5ET

