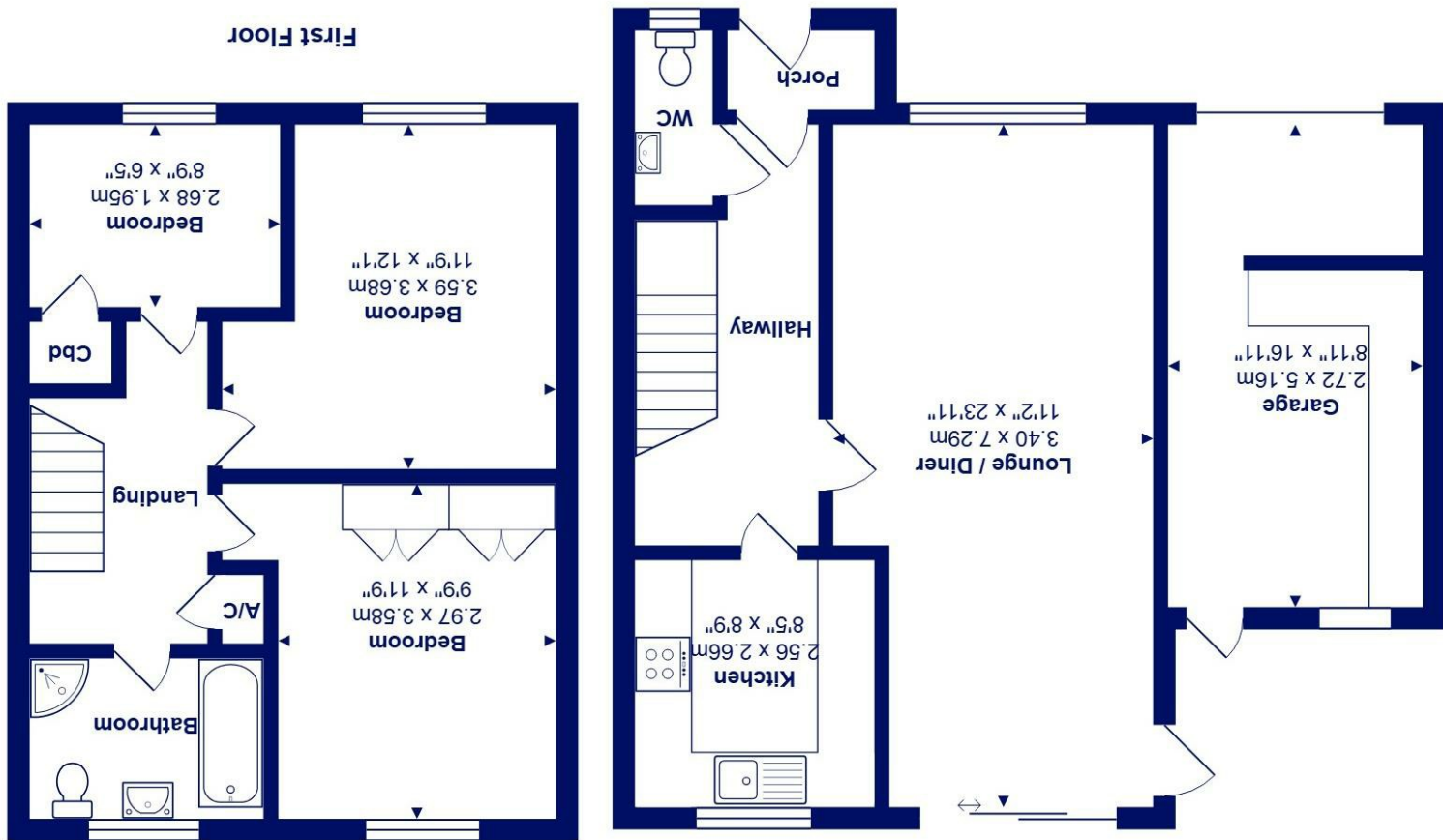




Total Area: 84.8 m² ... 913 ft² (excluding garage)
All measurements are approximate and for display purposes only



Ground Floor



21 Bluebell Close, Highcliffe on Sea, BH23 4LW

£415,000

Mitchells
1963 — TODAY

A well presented, semi-detached house of about 913 sq ft built to traditional standards by Hoburne and quietly situated in a peaceful part of the development and backing onto open space. Offered for sale with no forward chain, the property is ready to move into straight away.

The Hoburne Farm Development is extremely popular being close to the beaches at Friars Cliff and within the catchment areas for both Highcliffe Primary and Comprehensive schools. This house is nicely presented and offers some scope for cosmetic improvement.

- Fitted wardrobes to two of the first floor bedrooms
- Fully tiled family bathroom with separate shower cubicle
- Bright reception room with access to the garden
- Well fitted kitchen with a view of the back garden
- Quiet, popular development, close to the beach and Sainsburys
- Backs onto open space with garage and private driveway
- Recently redecorated, gas central heating and UPVC double glazing
- Quick possession available with no forward chain
- Potential to extend to the rear and over the garage (stpp)
- Viewing recommended

EPC Rating Band: D

Council Tax Band: D

Freehold

Successful buyers will be required to complete online identity checks provided by Lifetime Legal. The cost of these checks is £45 inc. VAT per purchase which is paid in advance, directly to Lifetime Legal. This check verifies your identity in line with our obligations as stipulated by our regulatory body, HMRC

