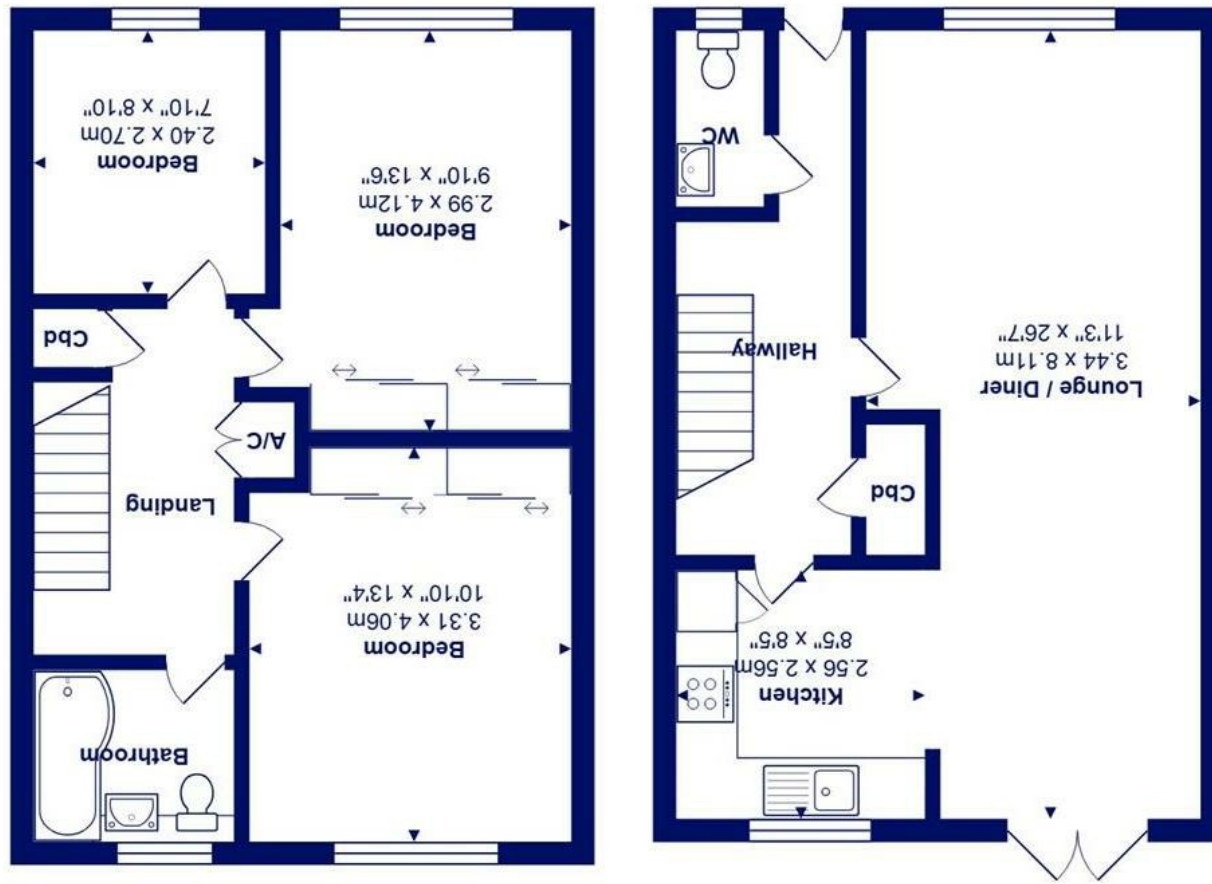




All measurements are approximate and for display purposes only
Total Area: 89.9 m² ... 968 ft²



91 Plantation Drive, Walkford, BH23 5SG

£329,950

Mitchells
1963 — TODAY

A well proportioned three bedroom end terrace home offering approximately 970 sqft of accommodation, located in this popular residential area. The property features a welcoming entrance hallway with a ground floor cloakroom and access to a generous full depth lounge/diner, extending to approximately 26ft and providing an excellent space for modern family living.

- Three bedroom end terrace house
- Approx. 970 sqft of well presented accommodation
- Impressive 26ft lounge/diner with front and rear aspects
- French doors opening onto the rear garden
- Gloss finish fitted kitchen overlooking the private garden
- Ground floor cloakroom WC
- First floor recently re-fitted and modern family bathroom
- An established east facing enclosed rear garden with shed and greenhouse
- Sought after residential location within walking distance of the shops at Walkford, Highcliffe Schools catchment area and a short drive to Highcliffe beach
- EPC 'C'

EPC Rating Band: C
 Council Tax Band: C
 Freehold

