



26 Disraeli Road, Christchurch BH23 3NB

£499,950

Mitchells

1963 — TODAY



Disraeli Road, Christchurch

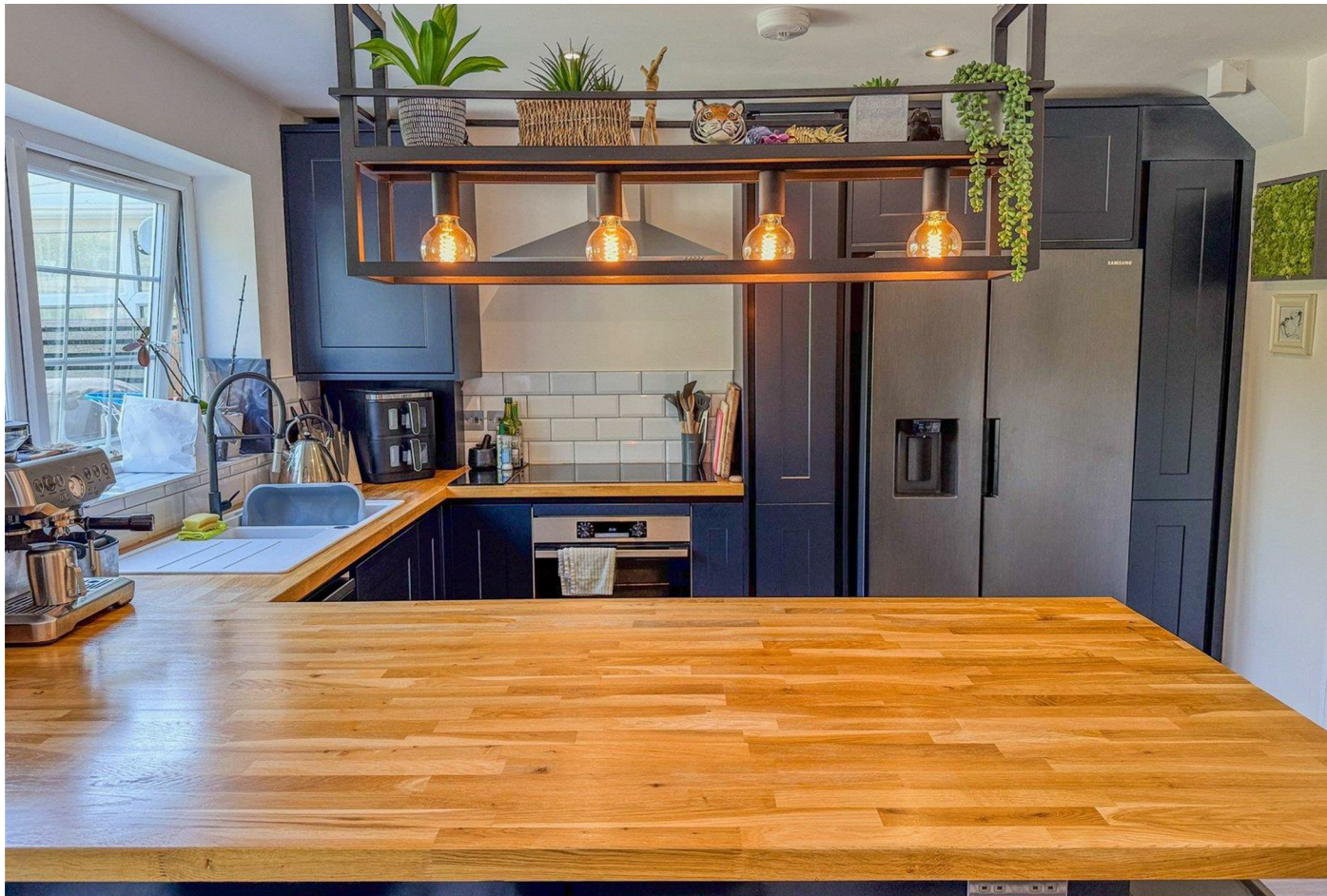
An outstanding Georgian style townhouse on this highly acclaimed development that has been completely modernised throughout providing light, bright accommodation with spacious room sizes that total nearly 1200 sq. ft. This lovely property benefits from features including a fantastic open plan kitchen/diner, private rear garden overlooking the nature reserve and a garage in a nearby block.



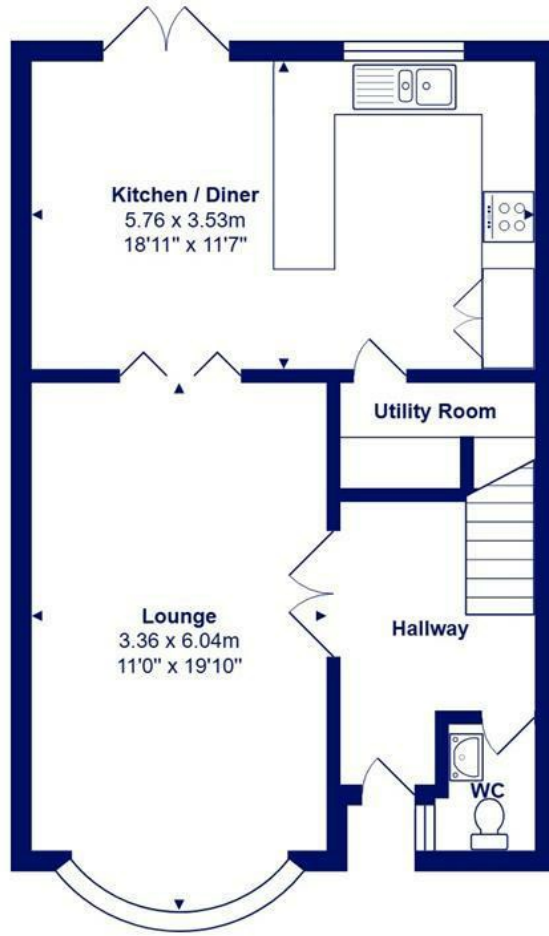
The Property

- Georgian style townhouse of approximately 1141 sq. ft
- Four first floor bedrooms all featuring build in wardrobes
- Family bathroom, ensuite shower room and separate downstairs w/c
- Spacious lounge with feature bay window
- Fantastic kitchen-dining room with access onto the garden
- Separate utility room and large entrance hallway
- Private rear garden overlooking the nature reserve
- Garage in a nearby block
- Enviably located in a popular development a stones throw from Stanpit Marsh
- Council Tax Band





Location



Ground Floor



First Floor



Total Area: 106.0 m² ... 1141 ft²
 All measurements are approximate and for display purposes only







www.mitchells.uk.com
Mudford@mitchells.uk.com
01202 499295

Mudford
112-114 Cambridge House Stanpit
Christchurch
BH23 3ND

