



7 Studley Court, Barton On Sea, BH25 7TE

£659,950

Mitchells
1963 — TODAY



*7 Studley Court
Barton On Sea
New Milton
Hampshire
BH25 7TE*

A well positioned, four bedroom, extended, detached family house occupying arguably the finest position in this popular modern development, within easy walking distance of the beautiful Barton on Sea clifftop and beach. The property has recently been extended to the rear, creating a stunning, large kitchen/dining/family space in addition to the existing sitting/dining room. Other features include a master bedroom with a dressing area and en-suite shower room, a south facing rear garden, and a double garage that has been subdivided to create a home office. An internal viewing is strongly recommended.

- Entrance Hall
- Kitchen/Dining/Living Space
- Sitting/Dining Room
- Cloakroom
- Utility Room
- Four Bedrooms
- Family Bathroom
- En-Suite Shower Room
- Double Garage Housing A Home Office
- Off Road Parking & Private Gardens



The Property

Entrance hall with a UPVC double glazed front door, tiled flooring, stairs to the first floor, and an understairs storage cupboard with automatic lighting.

Lovely double aspect sitting/dining room with attractive herringbone flooring, a bay window to the front aspect, and double glazed casement doors opening onto the patio and rear garden.

Stunning large kitchen/dining/family space with high level glazing and bi-fold doors onto the garden. The kitchen area offers an excellent range of high quality units with soft closing drawers and doors, and a stone effect worktop. Integrated appliances include a Bosch electric oven, a combination oven, a four burner gas hob, an extractor, a fridge, and a separate freezer. There is an island unit with an inset one and a half bowl sink and mixer tap, a breakfast bar area, ample room for a kitchen table and sofas, attractive herringbone effect flooring, recessed ceiling spotlights, and a southerly outlook over the rear garden.

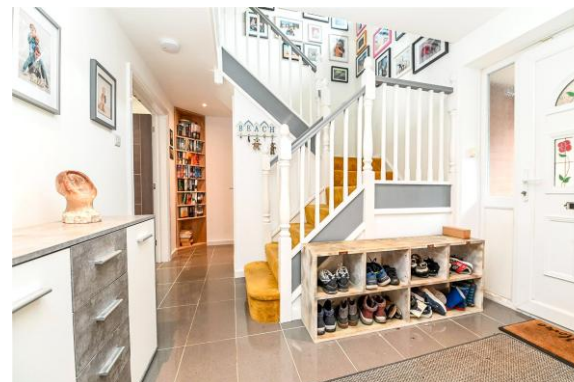
Useful separate utility room with a further range of storage units, a sink with mixer tap, space for a tall fridge/freezer and washing machine, recessed ceiling spotlights, and a UPVC double glazed door to outside.

Ground floor cloakroom fitted with a modern white suite.

First floor landing with a trap to the roof space, recessed ceiling spotlights, and an airing cupboard.

Four first floor bedrooms, three with built-in wardrobes, with the master bedroom benefiting from a dressing area and an en-suite shower room fitted with a white suite comprising a corner shower cubicle, a wash basin with storage beneath, a WC, a contemporary radiator, an extractor fan, and recessed ceiling spotlights.

Family bathroom fitted with a white suite comprising a panel bath, a wash basin with storage beneath, a WC, fully tiled walls, and a chrome ladder style heated towel rail.





Gardens & Grounds

The property benefits from a lovely private outlook to the front, with a tarmac driveway providing off road parking for two vehicles and leading to the garage.

Double garage with an electrically operated roller door, power, and light. The garage is currently subdivided to create a useful home office space with an outlook to the front.

The rear garden enjoys a sunny southerly aspect, with an area of textured paved patio and the remainder laid mainly to lawn.

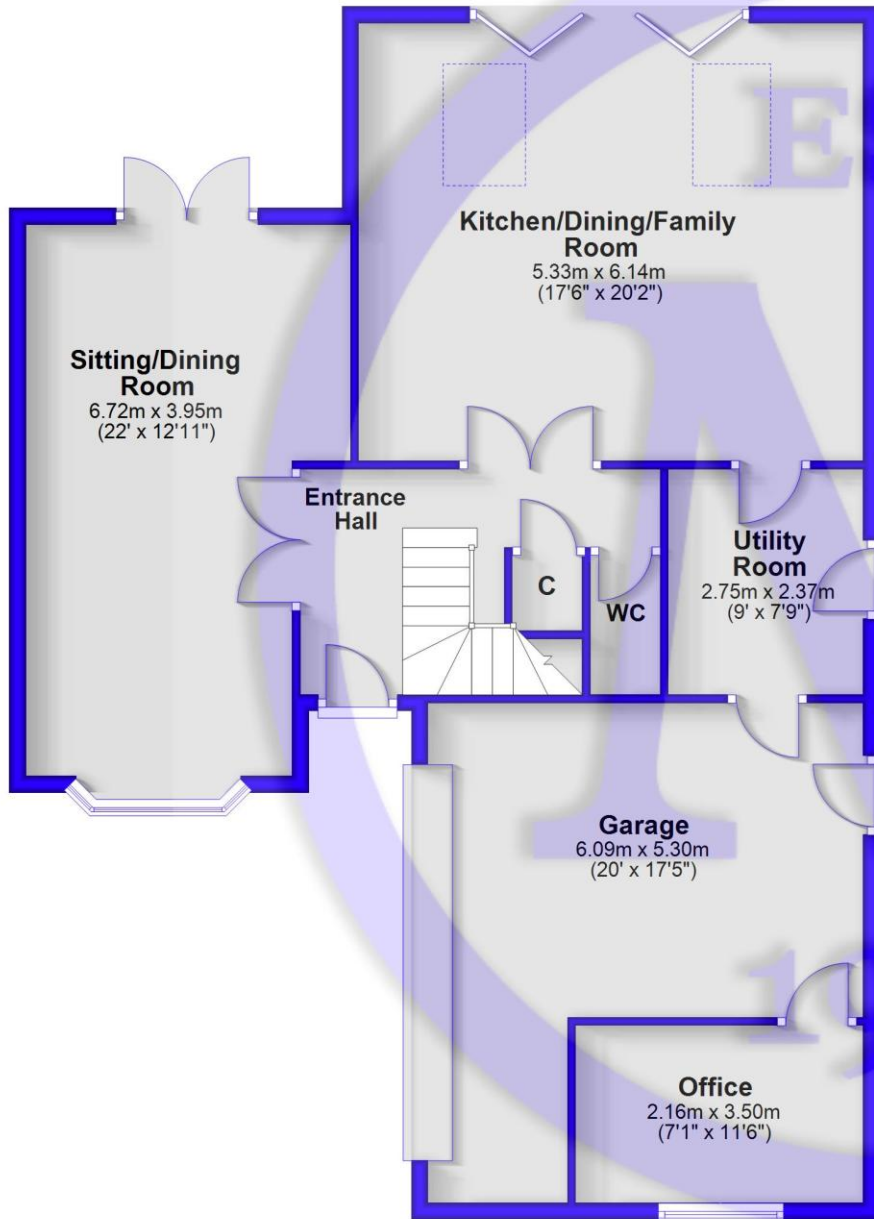
Services

- Mains gas, electricity, drainage and water
- Council Tax Band: F
- Energy Performance Rating: E



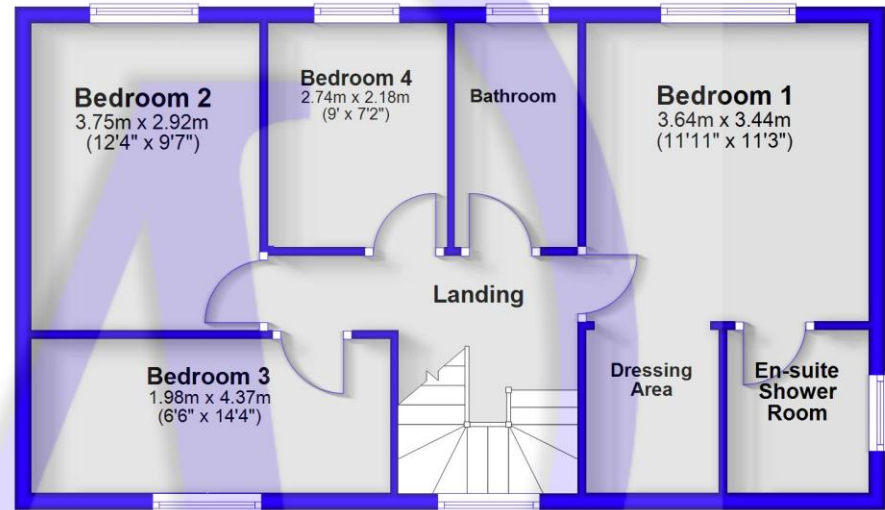
Ground Floor

Approx. 109.6 sq. metres (1180.0 sq. feet)



First Floor

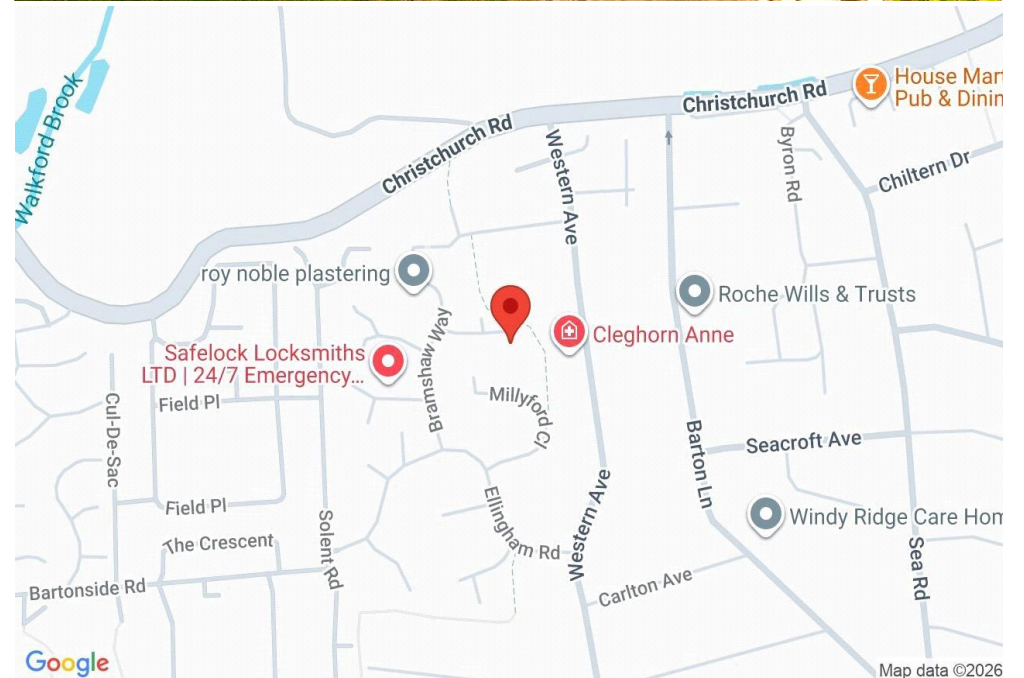
Approx. 59.3 sq. metres (638.7 sq. feet)



Total area: approx. 169.0 sq. metres (1818.8 sq. feet)

Situation

Barton on Sea, a charming part of New Milton, sits along the same stunning Solent coast. It offers wide views over Christchurch Bay to the Isle of Wight and access to beautiful coastal walks both ways—ideal if you love the outdoors. It's close to New Forest National Park's open landscapes and has direct rail links to London Waterloo. Barton on Sea also features great schools, fine dining at Chewton Glen Hotel and Pebble Beach restaurant, and that 27-hole golf course. It's a perfect mix of nature, convenience, and luxury for coastal living.





Mitchells.uk.com
info@mitchells.uk.com
01425 616411

Centenary Buildings
8-10 Old Milton Road
New Milton
Hampshire
BH25 6DT

Mitchells
1963 — TODAY

