



6 Friars Road, Christchurch BH23 4EA

£1,600,000

Mitchells

1963 — TODAY



Friars Road, Christchurch

A commanding 'New England style 'beach house' approaching 3000 sqft, situated on one of Friars Cliff's best roads with the stunning blue flag beach just moments away. No expense has been spared on the comprehensive refurbishment of this outstanding home with the house boasting incredibly bright living space with the finest fittings and a glorious large garden to the rear. First impressions here are spot on.



The Property

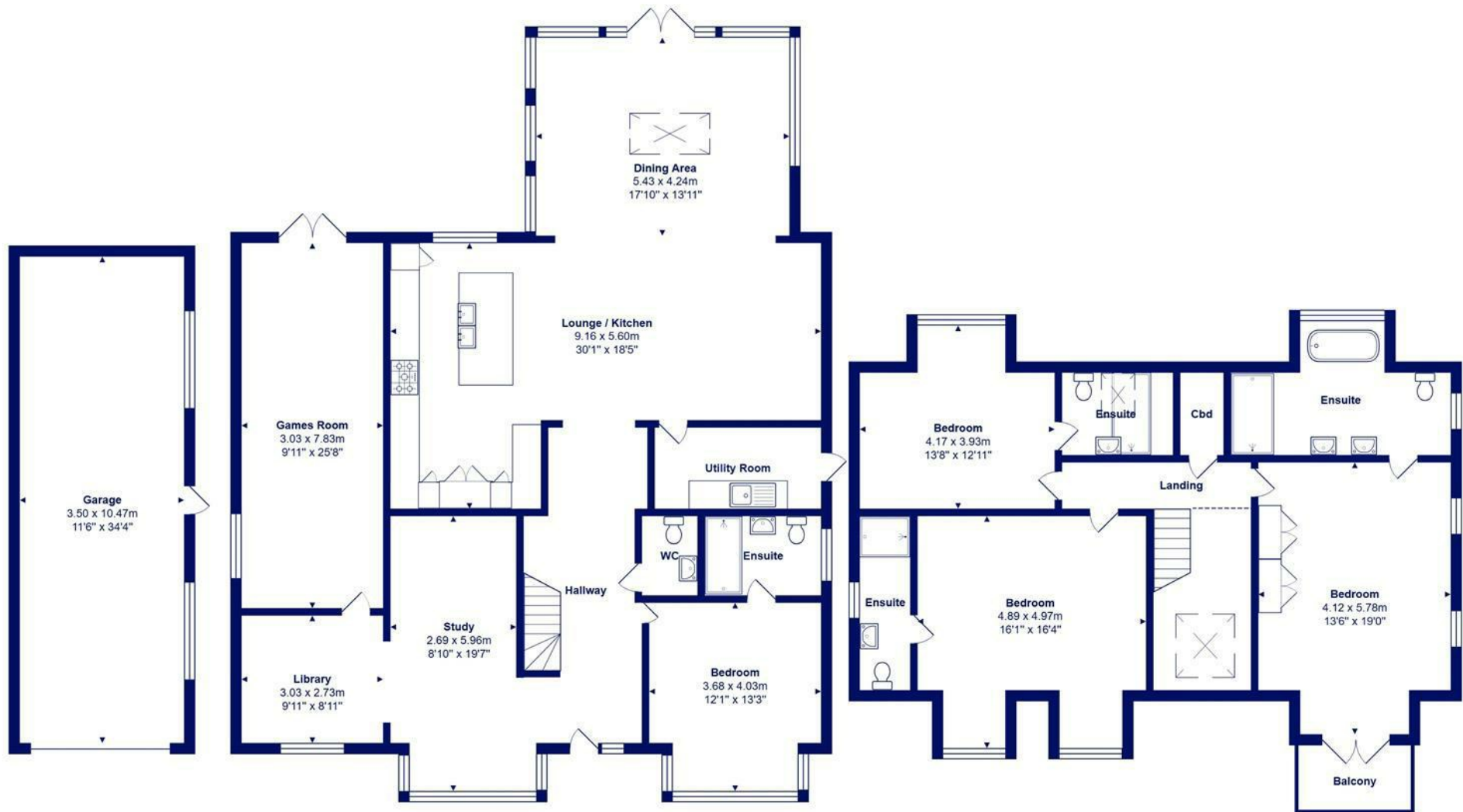
- Exceptional coastal home in true show home order, immaculate in every respect
- Beautifully proportioned rooms with high ceilings and large New England style sash windows
- Master bedroom suite with bespoke wardrobes, luxury en-suite and balcony, three further en-suite bedrooms (one ground floor)
- Wonderful open plan kitchen/dining/living space, split level and with a large roof lantern and access onto the gardens
- Study and adjacent library, superb internal pub/bar/games room- the perfect entertainment space!
- Plenty of parking, detached double length garage (suitable for conversion if required) and a fabulous large rear garden
- Porcelain terracing and pathways, covered pergola and hand crafted Purbeck stone outdoor BBQ
- A fantastic house with one of the largest plots on the market in Friars Cliff currently
- Council Tax 'F' £3304.60
- EPC 'C'





Location





Ground Floor

First Floor



Total Area: 258.1 m² ... 2778 ft² (excluding balcony, garage)
 All measurements are approximate and for display purposes only







www.mitchells.uk.com
Highcliffe@mitchells.uk.com
01425 272206

Highcliffe
284 Lymington Road
Highcliffe
Christchurch
BH23 5ET

