



4 Brook Way, Christchurch BH23 4HA

£1,100,000

Mitchells
1963 — TODAY



Brook Way, Christchurch

A simply stunning, single storey home of about 1600 sq ft in this exclusive enclave in Friars Cliff and just a short stroll to the blue flag beaches. Renovated to the highest possible standards to the owners specification by highly regarded builders Smith and Rowsell. Immaculate inside and out with designer fittings, fantastic open plan living space and a truly spectacular garden- no forward chain.



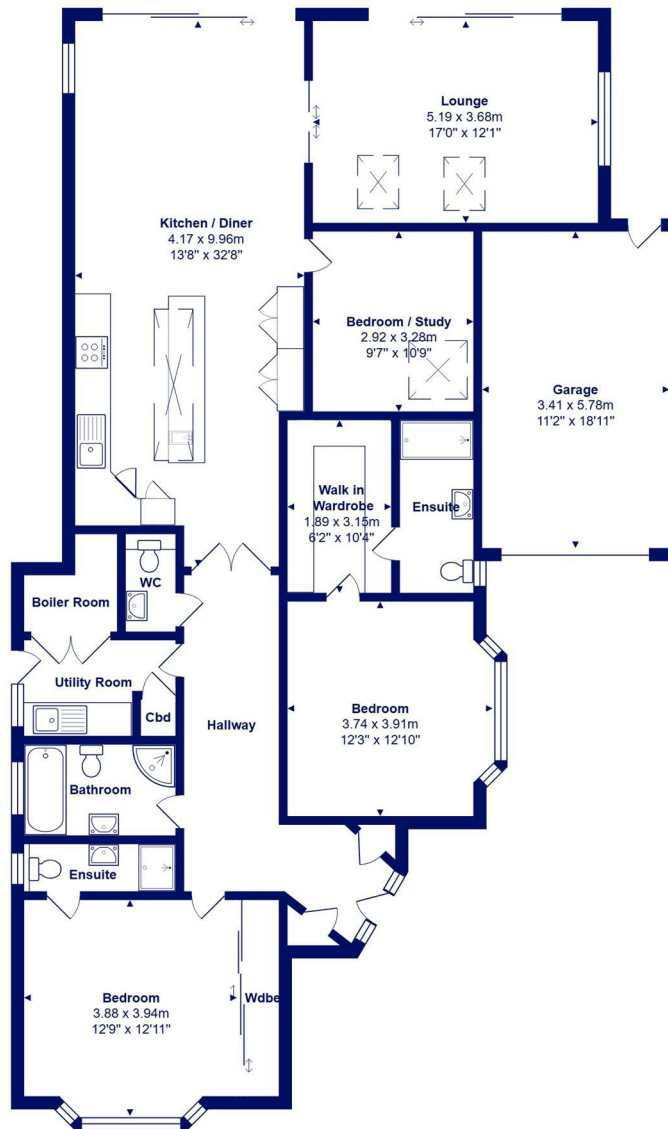
The Property

- Master bedroom suite with fully fitted dressing room and luxury en suite with designer sanitary ware and tiling by Porcelenosa
- Spacious guest bedroom with fitted wardrobes and en-suite
- Study/bedroom three
- Fabulous open plan kitchen with large roof lantern over the island, integrated appliances, quartz worktops and underfloor heating with Amtico flooring
- Large aluminium patio doors from the kitchen/family room to the garden with vaulted ceiling over the sitting area
- Separate vaulted lounge, interconnecting with the kitchen and aluminium patio doors to the garden
- Utility room with cupboard housing pressurized cylinder and twin batteries with circa 14kwh storage
- Beautifully stocked rear garden with colourful beds and borders, garage and off road parking with block paved driveway
- Tasteful decor, plantation shutters to some windows, flat plastered ceilings, new internal doors and flooring, electric car charging point
- Outstanding in every respect- extremely rare to find a bungalow of this calibre in Friars Cliff





Location



Total Area: 147.5 m² ... 1588 ft² (excluding garage)
 All measurements are approximate and for display purposes only







www.mitchells.uk.com
Highcliffe@mitchells.uk.com
01425 272206

Highcliffe
284 Lymington Road
Highcliffe
Christchurch
BH23 5ET

