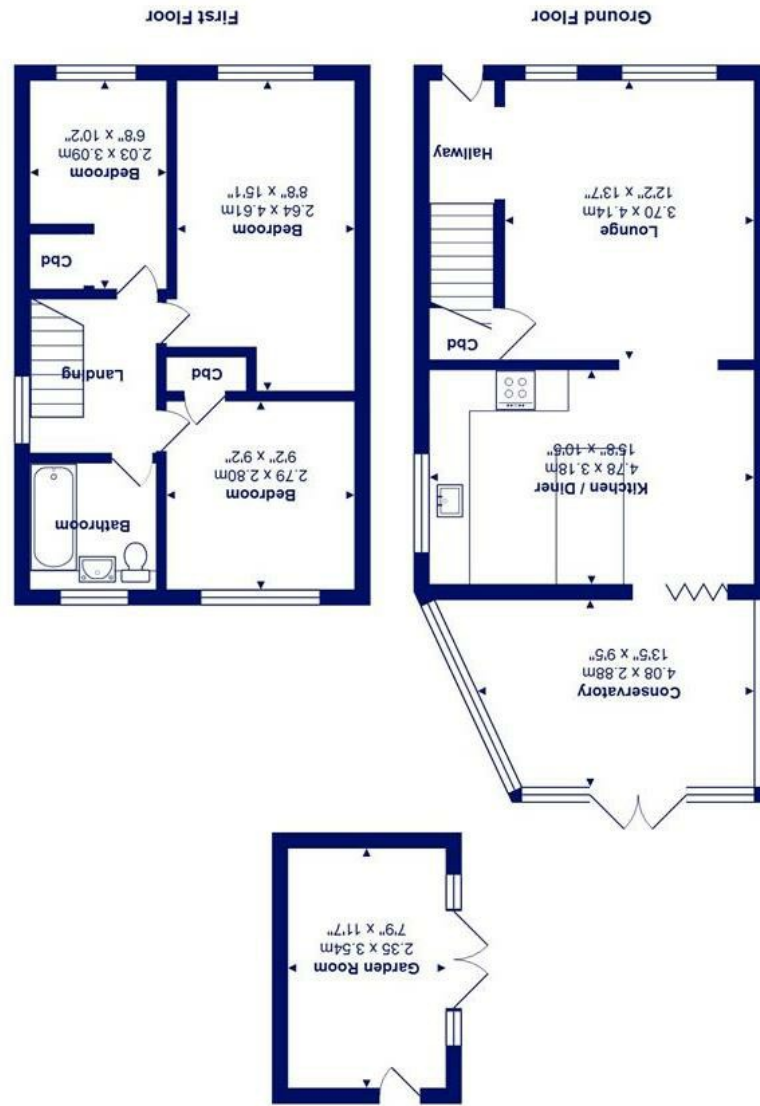




All measurements are approximate and for display purposes only  
Total Area: 93.4 m<sup>2</sup> ... 1006 ft<sup>2</sup>



19 Nelson Drive, Mudeford, BH23 3SB

£430,000

**Mitchells**  
1963 — TODAY

A delightful semi-detached freehold property of over 1000 sqft situated in the heart of Mudeford with driveway parking, conservatory extension, sunny rear garden and recently installed garden room. Presented in excellent order throughout this lovely home offers light and airy rooms and spacious accommodation.

Located within the catchment area of the local sought after schools, local shops, bus routes and within walking distance of Mudeford Quay and Avon Beach.

- Semi-detached house with 1006 sqft. of accommodation
- Three first floor bedrooms
- Large lounge with outlook to the front
- Open plan kitchen/dining room leading to a conservatory extension
- Modern family bathroom
- Private rear garden with plenty of storage and several seating areas
- Insulated garden building with power
- Driveway parking for several vehicles
- Close to local shops, bus routes and within catchment area of local schools

EPC Rating Band: D

Council Tax Band: D

Freehold

Successful buyers will be required to complete online identity checks provided by Lifetime Legal. The cost of these checks is £45 inc. VAT per purchase which is paid in advance, directly to Lifetime Legal. This check verifies your identity in line with our obligations as stipulated by our regulatory body, HMRC

