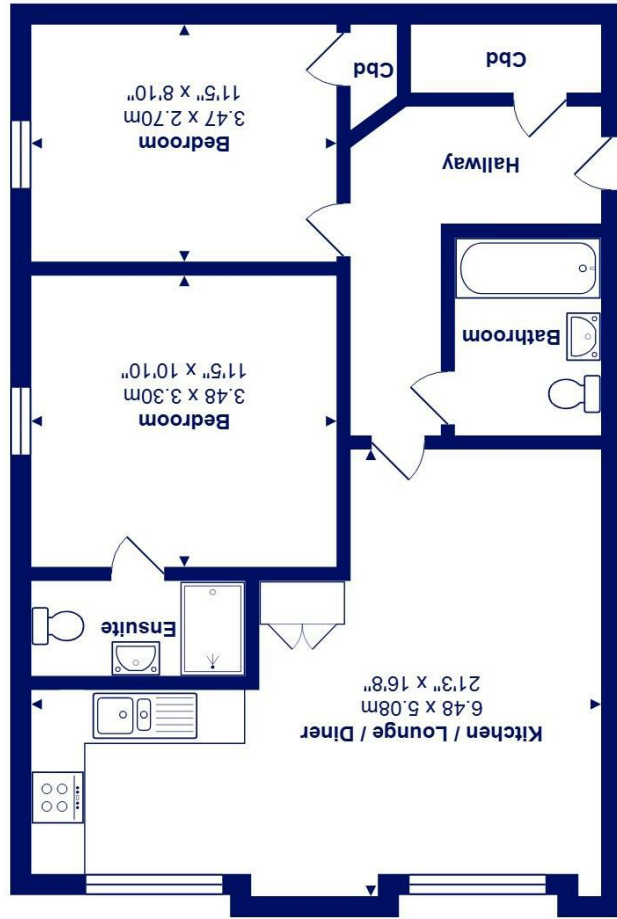




All measurements are approximate and for display purposes only  
Total Area: 63.0 m<sup>2</sup> ... 678 ft<sup>2</sup>



411-413 Lymington Road, Highcliffe On Sea, BH23 5EN £210,000

**Mitchells**  
1963 — TODAY

A stylish and economic to run (EPC: B) 2 double bedroom, two bathroom, second floor (with lift) apartment of approaching 700 sqft, conveniently situated right in the centre of Highcliffe.

- Ensuite to main bedroom
- Excellent decorative condition throughout
- Gas central heating; new boiler Feb 2024, serviced 9/2/26
- Upvc double glazing
- City Fibre being installed to the block this year.
- Passenger lift to all floors
- Security entry phone system
- Allocated parking space and visitors space
- Management Company Asset Property Management 01202 532898
- Short stroll the main high street, cliff top and beach

EPC Rating Band: B  
Council Tax Band: B  
Leasehold

Successful buyers will be required to complete online identity checks provided by Lifetime Legal. The cost of these checks is £45 inc. VAT per purchase which is paid in advance, directly to Lifetime Legal. This check verifies your identity in line with our obligations as stipulated by our regulatory body, HMRC

