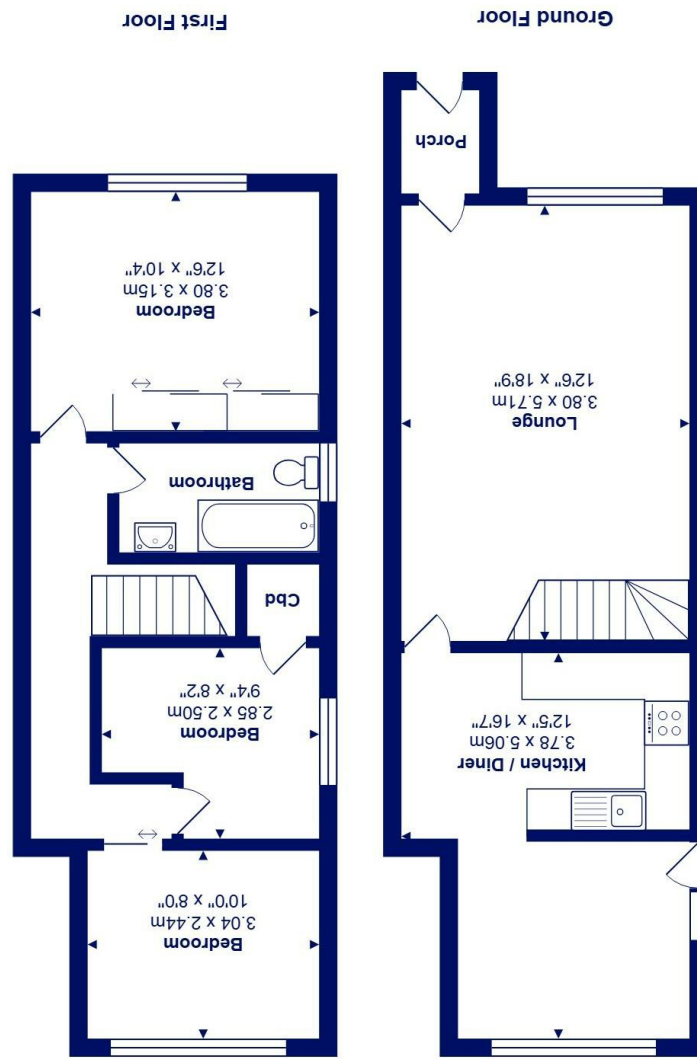




All measurements are approximate and for display purposes only  
Total Area: 81.0 m<sup>2</sup> ... 871 ft<sup>2</sup>



22 Howard Close, Mudeford, BH23 3HY £350,000

**Mitchells**  
1963 — TODAY

**\*NO CHAIN\*** A well maintained and deceptively spacious three bedroom end of terrace property of approaching 900 sq ft. Featuring an extended kitchen/dining room, generous living room, private rear garden and allocated parking.

Situated in this pleasant residential area, close to Mudeford Wood and within walking distance of Avon Beach, Mudeford Quay and local schools. There is also a useful convenience store just around the corner.

- Three bedroom freehold house of nearly 900 sqft
- Spacious lounge
- Extended kitchen/dining room overlooking the garden
- Three well proportioned bedrooms
- First floor family bathroom
- Private rear garden with plenty of room to the side
- Allocated parking space
- Convenient location, within the catchment of local schools
- uPVC double glazing and Gas fired central heating

EPC Rating Band: C  
Council Tax Band: C  
Freehold

Successful buyers will be required to complete online identity checks provided by Lifetime Legal. The cost of these checks is £49 inc. VAT per purchase which is paid in advance, directly to Lifetime Legal. This check verifies your identity in line with our obligations as stipulated by our regulatory body, HMRC

