



7 Beacon Drive, Christchurch BH23 5DH

£795,000

Mitchells

1963 — TODAY



Beacon Drive, Christchurch

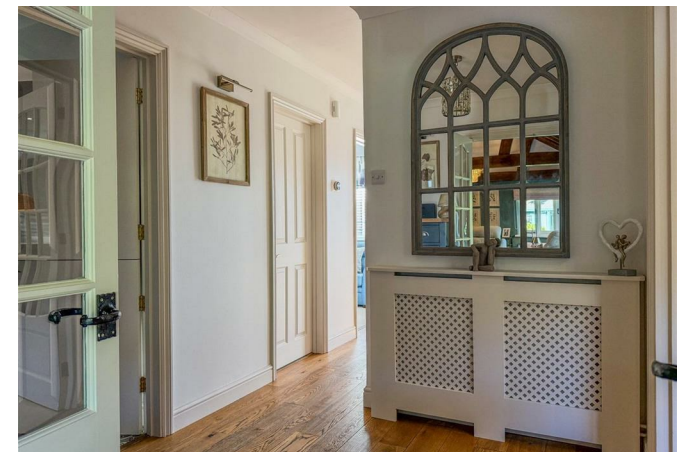
A stunning and stylish three/four bedroom detached family house of about 1900sqft, enviably located on the south side of Lymington Road, just a short stroll from both the High Street and Cliff Top. Benefitting from a lovely established and private rear garden, garage, electric car charging point and ORP for five vehicles.



The Property

- Master bedroom with lovely ensuite
- Three further bedrooms all with built-in wardrobes
- Very smart family bathroom
- Impressive hall with feature staircase
- Spacious landing with fitted Study area and storage
- Ground floor bedroom four/study
- Stunning, approx 12 x 24ft, kitchen/diner with stylish units and quartz tops
- Separate utility room
- Magnificent large sitting room with wood beams
- Summerhouse, garden workshop and garden store, all with light and power





Location

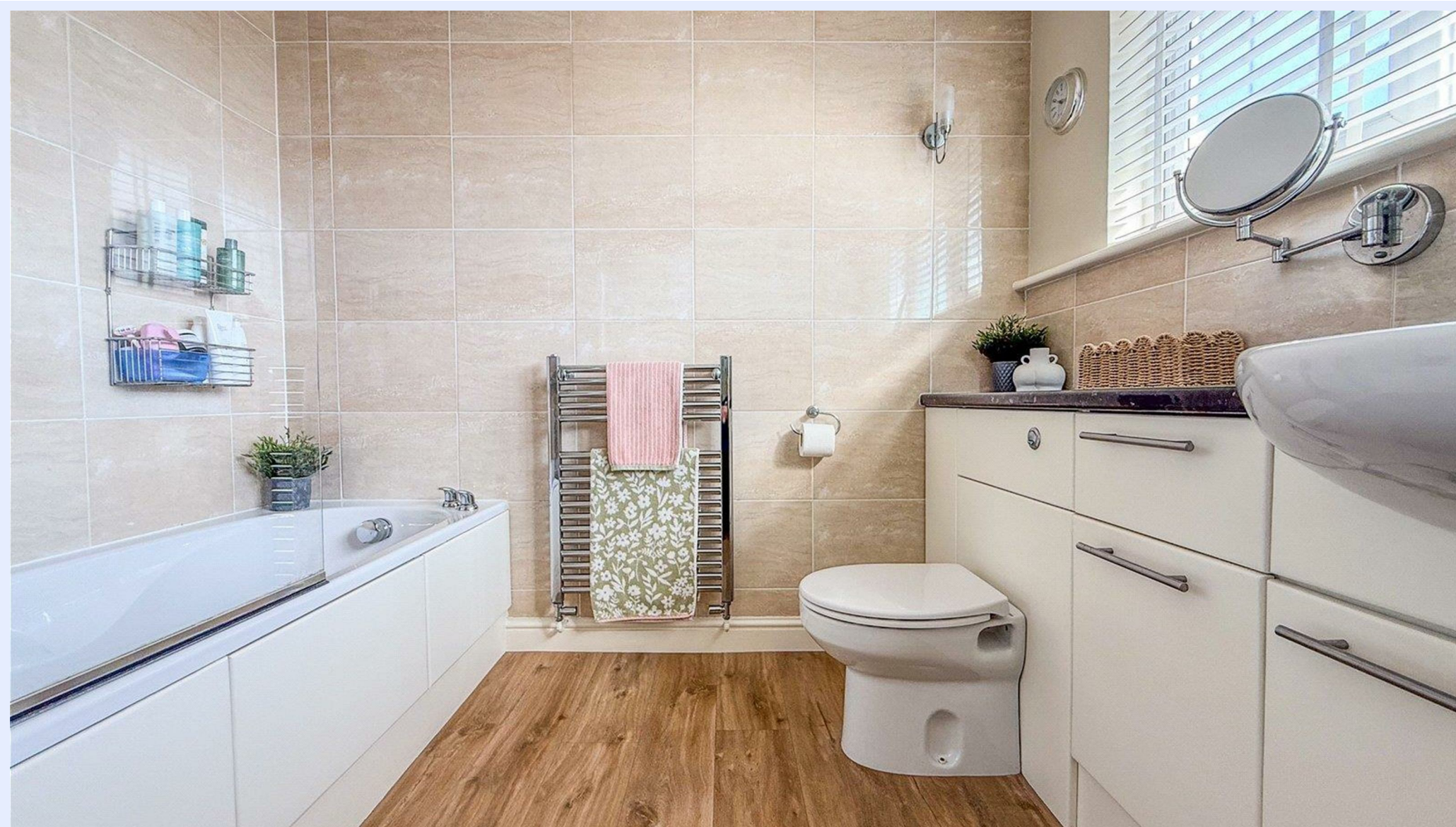




Total Area: 173.4 m² ... 1867 ft² (excluding garden room, store)
 All measurements are approximate and for display purposes only







www.mitchells.uk.com
Highcliffe@mitchells.uk.com
01425 272206

Highcliffe
284 Lymington Road
Highcliffe
Christchurch
BH23 5ET

