



23 Shelley Close, Christchurch BH23 4HW

£495,000

Mitchells

1963 — TODAY



Shelley Close, Christchurch

A very spacious detached chalet of about 1300sqft just a short walk away from the award winning Friars Cliff beach. The property stands on a generous plot with a sunny rear garden and has plenty of space to the left hand side giving potential for extension (stpp). The first floor has already been converted to give two double bedrooms both with en suites with flexible living/bedroom space on the ground floor. No forward chain.



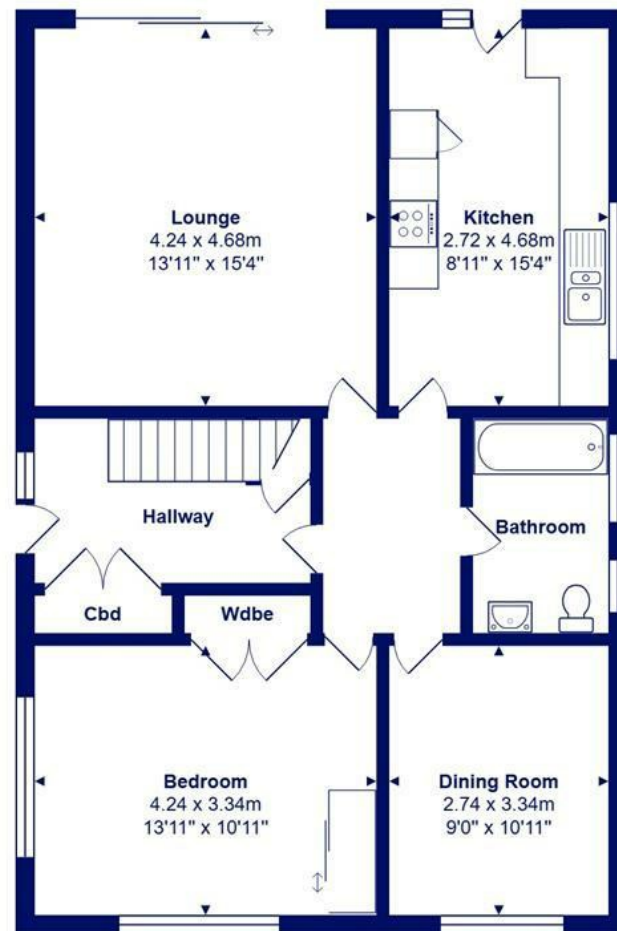
The Property

- Chalet bungalow in great condition with generous rooms sizes
- Large sitting room with feature facing brick fireplace and access onto the garden
- Two double bedrooms on the ground floor (one currently used as a dining room)
- Well converted loft with two similarly sized double bedrooms and en-suite facilities
- Modern fitted kitchen with access onto the sun deck
- Large garden with an abundance of parking, enclosed rear garden and detached garage/storage
- Gas fired heating, UPVC double glazed windows
- About 1 mile to Highcliffe village and walking distance of the sea
- Council Tax

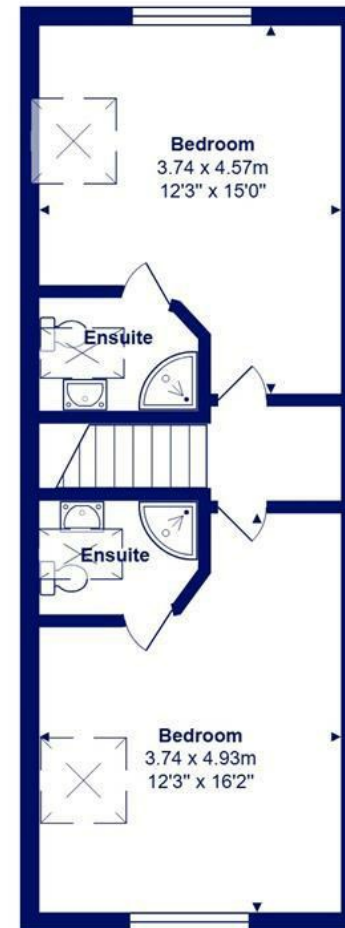




Location



Ground Floor



First Floor



Total Area: 119.5 m² ... 1286 ft²

All measurements are approximate and for display purposes only





www.mitchells.uk.com
Highcliffe@mitchells.uk.com
01425 272206

Highcliffe
284 Lymington Road
Highcliffe
Christchurch
BH23 5ET

