



*27a Pinewood Close, Christchurch BH23 5RR*

*£725,000*

**Mitchells**

1963 — TODAY



## *Pinewood Close, Christchurch*

An impressive, one-off, brand new home that has been finished to a first-class standard and is tucked away on a lovely quiet plot on the edge of Highcliffe. This stylish home features striking external elevations, designer fittings, solar panels and under floor heating to the ground floor and is also sold with the benefit of a new home warranty. Immediate possession available.



## The Property

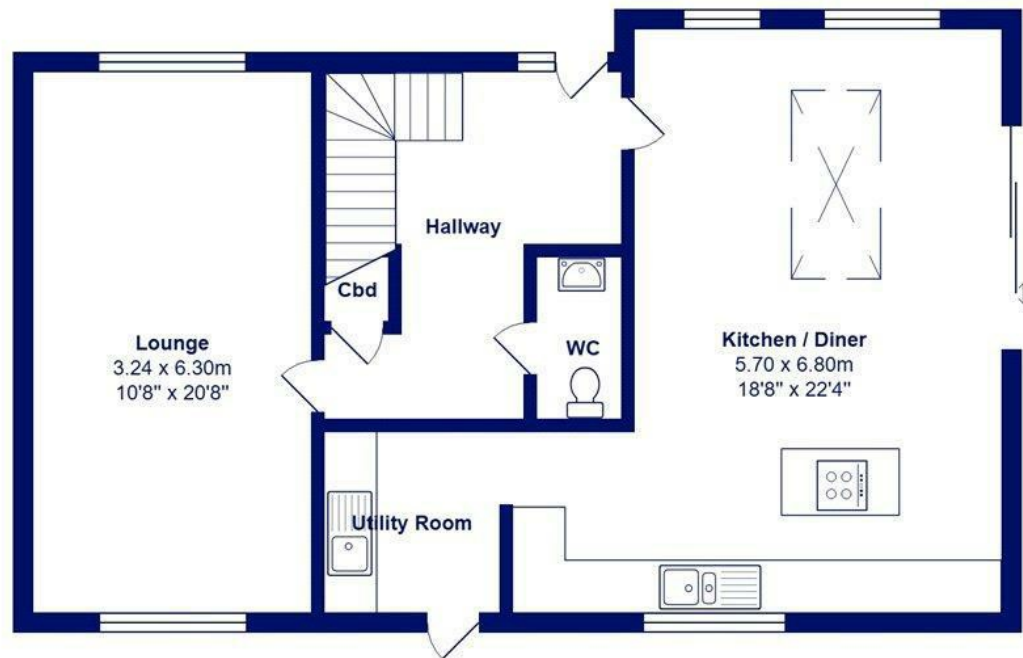
- Outstanding brand new home
- Stunning open plan kitchen/family room with large roof lantern flooding it with light and
- Aluminium bi-fold doors leading to the garden
- High end, contemporary kitchen with excellent appliance package, quartz work tops
- Separate sitting room
- Master bedroom with dressing area and luxury en-suite, two further bedrooms and stunning
- Family bathroom
- Gas fired central heating, solar panels, underfloor heating to the ground floor
- Flat plastered ceilings, quality internal doors, carpets to be fitted
- Excellent location with Highcliffe schools catchment area, local shops, pubs and the open fields of Hinton





Location





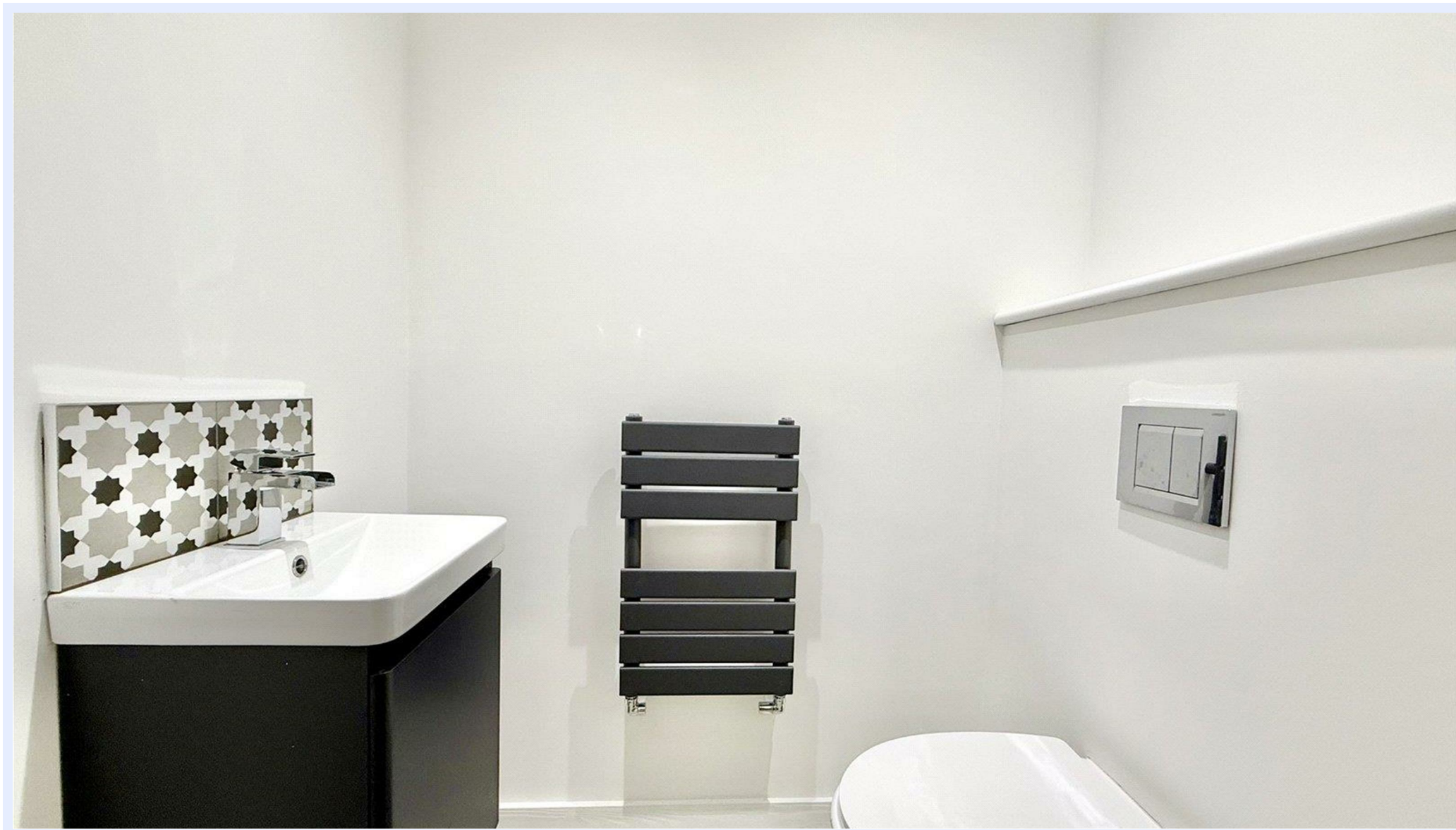
**Ground Floor**



**First Floor**

All measurements are approximate and for display purposes only





[www.mitchells.uk.com](http://www.mitchells.uk.com)  
[Highcliffe@mitchells.uk.com](mailto:Highcliffe@mitchells.uk.com)  
01425 272206

Highcliffe  
284 Lymington Road  
Highcliffe  
Christchurch  
BH23 5ET

