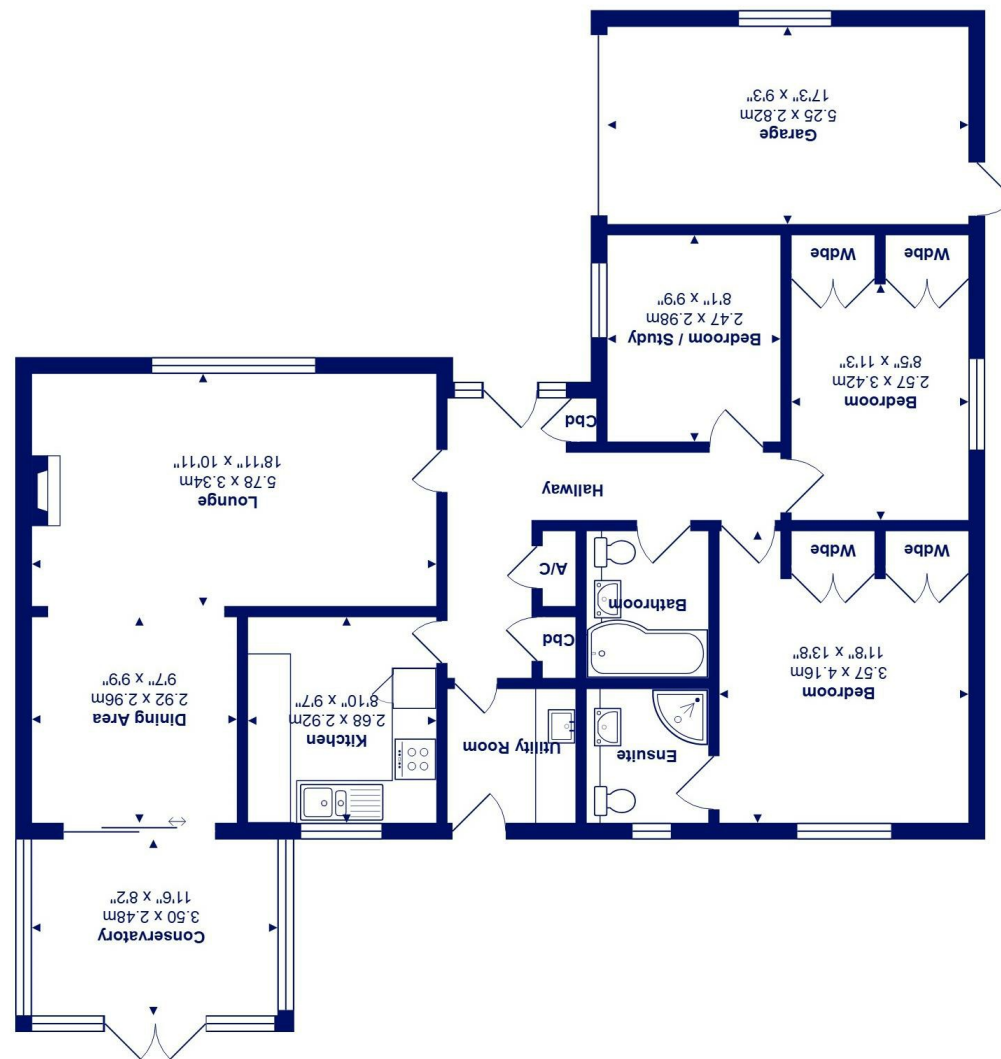




Total Area: 104.9 m² ... 1129 ft² (excluding garage)
All measurements are approximate and for display purposes only



4 Columbine Close, Highcliffe On Sea, BH23 4UB

£485,000

Mitchells
1963 — TODAY

A superbly presented and modernised three bedroom, two bathroom bungalow, positioned in a sought-after cul-de-sac on the forever popular Hoburne Farm Development. Offering spacious single-level living with excellent storage, ideally suited for buyers seeking a low-maintenance home or downsizing.

- Lovely accommodation of approx 1130sqft
- Three bedrooms (two with fitted wardrobes)
- Two bath/shower rooms (one en-suite)
- Spacious lounge/dining room with outlook to the front
- A good size conservatory extension
- Lovely large rear garden with areas for entertaining
- Off-road parking & single garage
- Short walk to Sainsbury's superstore and Friars Cliff beach is a little further on

EPC Rating Band: D
Council Tax Band: E
Freehold

