



26 Oakleigh Way, Christchurch BH23 5DQ

£525,000

Mitchells

1963 — TODAY



Oakleigh Way, Christchurch

A stylish detached bungalow in a brilliant location, south side of the main Lymington Road and just moments from the cliff top, foot path to the beach and the main village centre. The property enjoys lovely bright living space of about 1250sqft with modern fittings throughout and also has a delightful, south facing garden. No forward chain.



The Property

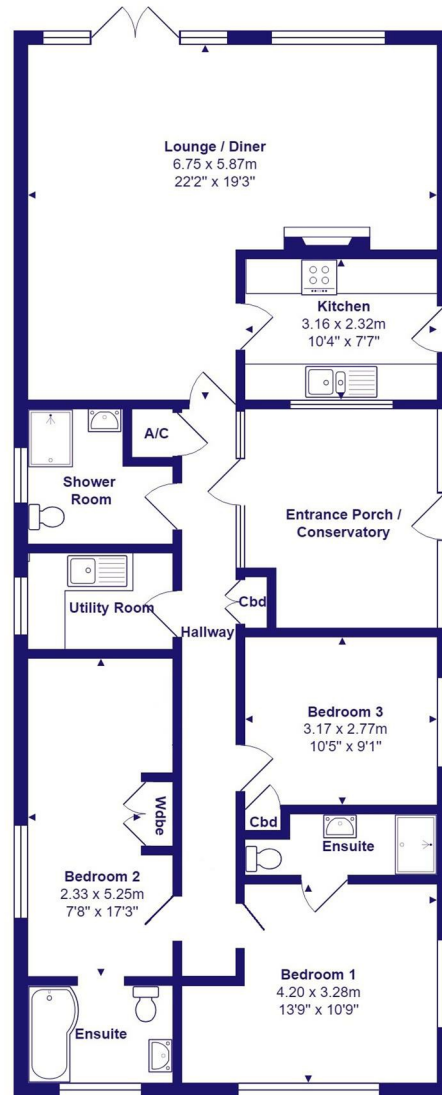
- Quality detached bungalow in a fantastic location right by the beach
- Comprehensively refurbished inside and out with quality fittings in the kitchen and all three bathrooms
- Lovely entrance porch/conservatory that really sets the property off when you walk in
- Bright, airy room sizes with generous bedroom space
- Smart bath/shower rooms (one en suite)
- Gas fired heating, UPVC double glazed windows and low maintenance gardens
- Off road parking and extremely private/sunny rear garden
- The main footpath on Beacon Drive is literally just around the corner giving access to cliff top walks, breathtaking views and easy access to the beach
- Immaculate inside and out
- Council Tax 'E' £2796.19





Location





Total Area: 115.8 m² ... 1246 ft²

All measurements are approximate and for display purposes only





www.mitchells.uk.com
Highcliffe@mitchells.uk.com
01425 272206

Highcliffe
284 Lymington Road
Highcliffe
Christchurch
BH23 5ET

