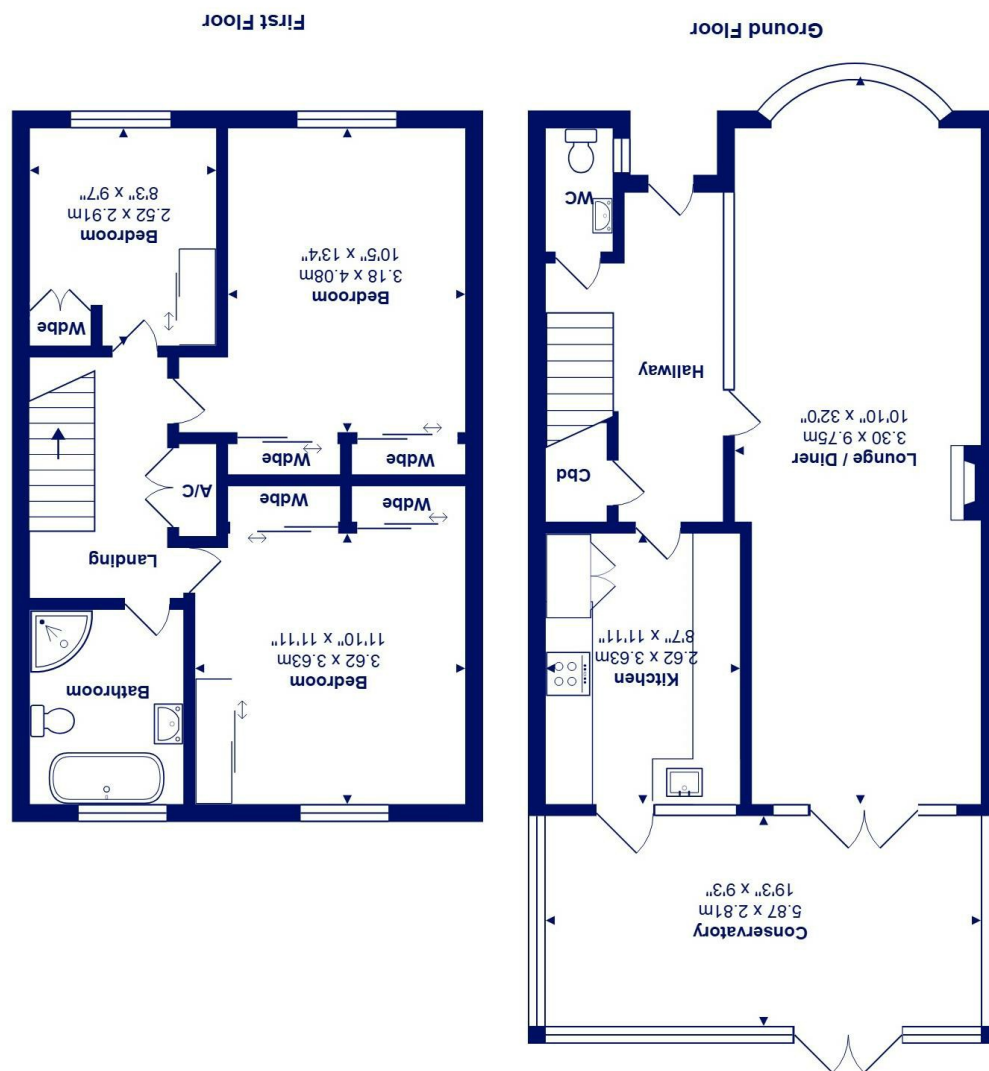




All measurements are approximate and for display purposes only  
Total Area: 122.7 m<sup>2</sup> ... 1320 ft<sup>2</sup>



17 Oakwood Road, Highcliffe on Sea, BH23 5NY £485,000

**Mitchells**  
1963 — TODAY

A gorgeous mid terrace townhouse with attractive Georgian style elevations offering a beautifully appointed interior and situated on one of the most sought after parts of the Latimers development. The property has been modernised throughout by the current vendors and enjoys lovely bright living accommodation on the ground floor leading onto a modern a UPVC conservatory extension. Both the kitchen and first floor shower room are luxuriously appointed and there are also three comfortable bedrooms on the first floor.

The courtyard style garden to the rear faces due south and the house benefits from a delightful aspect over the well-tended communal gardens and grounds to the front. Located approximately one mile from the main High Street shopping centre with the cliff top and beach being a little further on.

- Three generous bedrooms with built in wardrobes
- Re-fitted kitchen with granite worktops and some built in appliances
- Large entrance hallway
- Large dual aspect lounge/ dining room
- Large bathroom with separate shower & GF WC
- Superb full width conservatory
- South facing courtyard garden, Garage in a nearby block
- Extremely quiet position with no passing traffic and lovely outlook over the well-tended communal grounds and gardens
- Service charge for the upkeep of the communal grounds £645 p/a

EPC Rating Band: D

Council Tax Band: D

Freehold

Successful buyers will be required to complete online identity checks provided by Lifetime Legal. The cost of these checks is £49 inc. VAT per purchase which is paid in advance, directly to Lifetime Legal. This check verifies your identity in line with our obligations as stipulated by our regulatory body, HMRC

