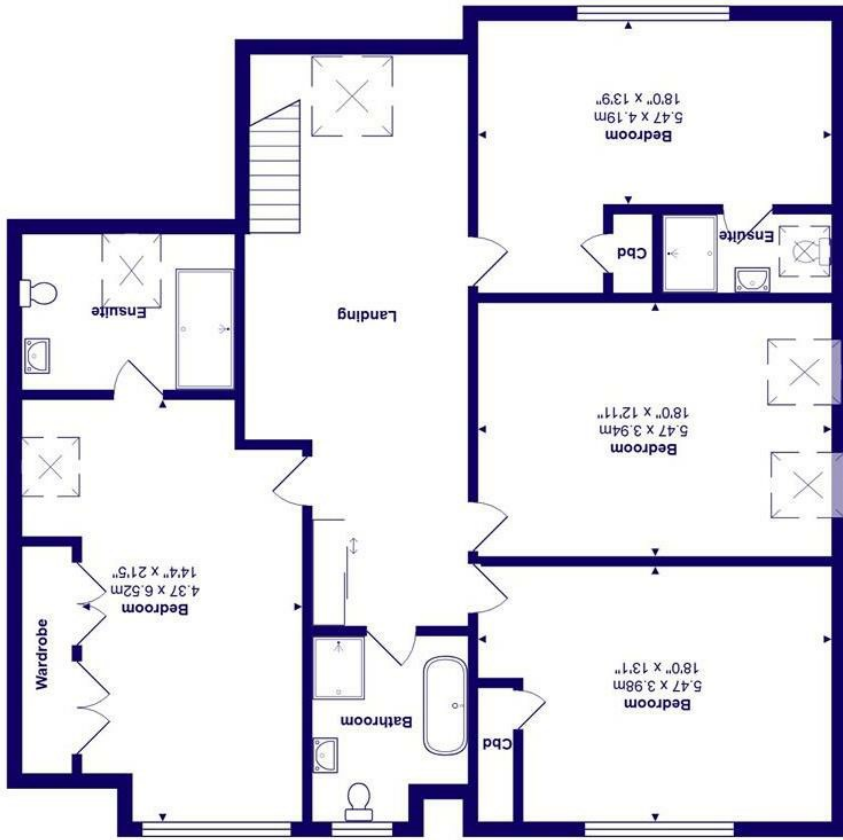




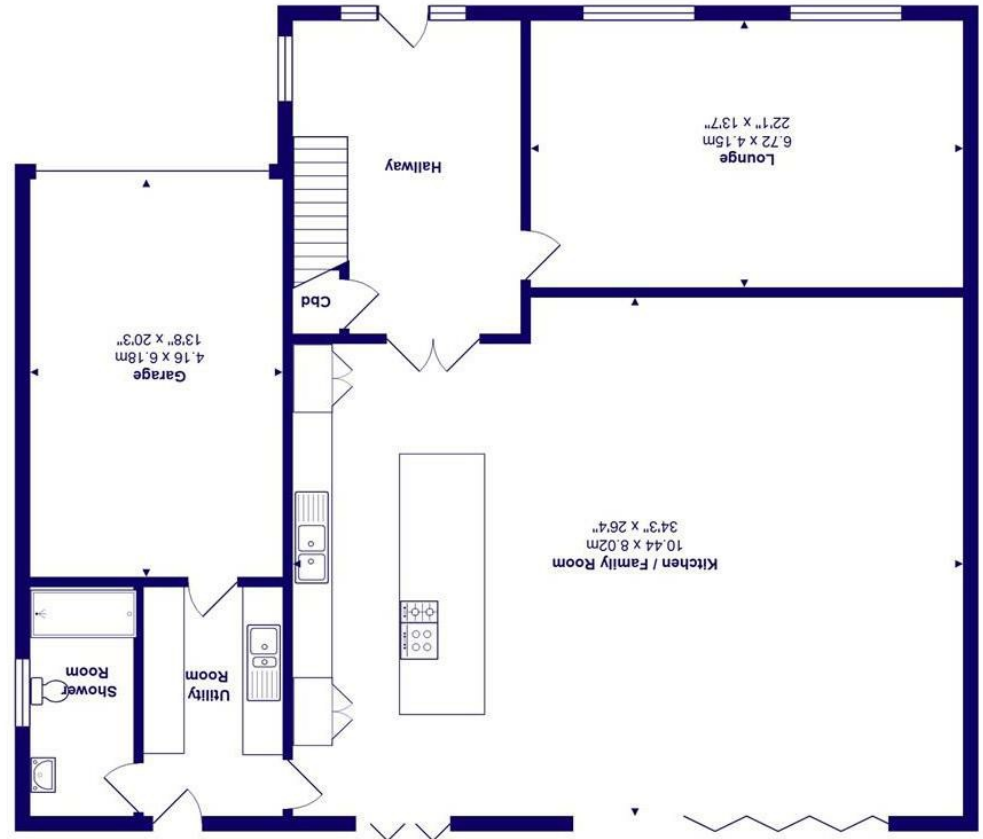
All measurements are approximate and for display purposes only
Total Area: 284.5 m² ... 3062 ft² (excluding garage)



First Floor



Ground Floor



10 Nea Road, Highcliffe On Sea, BH23 4NA

£1,250,000

Mitchells
1963 — TODAY

A simply stunning home of about 3000 sq ft, extensively renovated in 2021 and presented for sale in show home condition. Situated in a brilliant location close to Highcliffe Castle and the beach, this outstanding property offers luxurious living space with a first-class internal finish.

We sold this home to the current buyer on behalf of a very well known, local developer whom we have dealt with for many years. The standard of finish is exemplary, and the layout perfectly designed for modern day living with a spectacular open plan kitchen/family space with a central island and large first floor bedrooms with four designer bath/shower rooms (2 ensuite). The garden faces south west and enjoys all day sunshine whilst generous garaging and frontage provides ample parking. Quick possession available.

- Striking, architecturally designed home with superior accommodation over two floors
- Impressive reception hall with feature staircase and herringbone flooring that leads to the kitchen/family room
- 34'2 x 26'5 kitchen/family room, contemporary kitchen that is fully integrated, quartz worktops and two sets of bi-fold doors to the garden
- New gas heating and wiring, aluminium double glazed windows, quality floor coverings, all installed 2021
- Plantation style shutters and electric blinds to most windows
- Sanitary ware and tiling in all four bath/shower rooms by Porcelanosa
- Short walk to Highcliffe Castle with access to the beach, catchment area for both Highcliffe Schools
- Planning granted for first floor extension to master bedroom
- An incredible home, being sold due to job relocation- Vacant possession

EPC Rating Band: B
Council Tax Band: E
Freehold

Successful buyers will be required to complete online identity checks provided by Lifetime Legal. The cost of these checks is £45 inc. VAT per purchase which is paid in advance, directly to Lifetime Legal. This check verifies your identity in line with our obligations as stipulated by our regulatory body, HMRC

