



2 Trefoil Way, Christchurch BH23 4UG

£525,000

Mitchells

1963 — TODAY



Trefoil Way, Christchurch

A very nicely presented, detached bungalow of about 1250sqft being one of the largest designs on the highly acclaimed Hoburne Farm Development. Boasting spacious room sizes and a lovely sunny garden, the bungalow is situated on the edge of the development and within a short stroll of the local shops with the beaches at Friars Cliff being nearby. No forward chain.



The Property

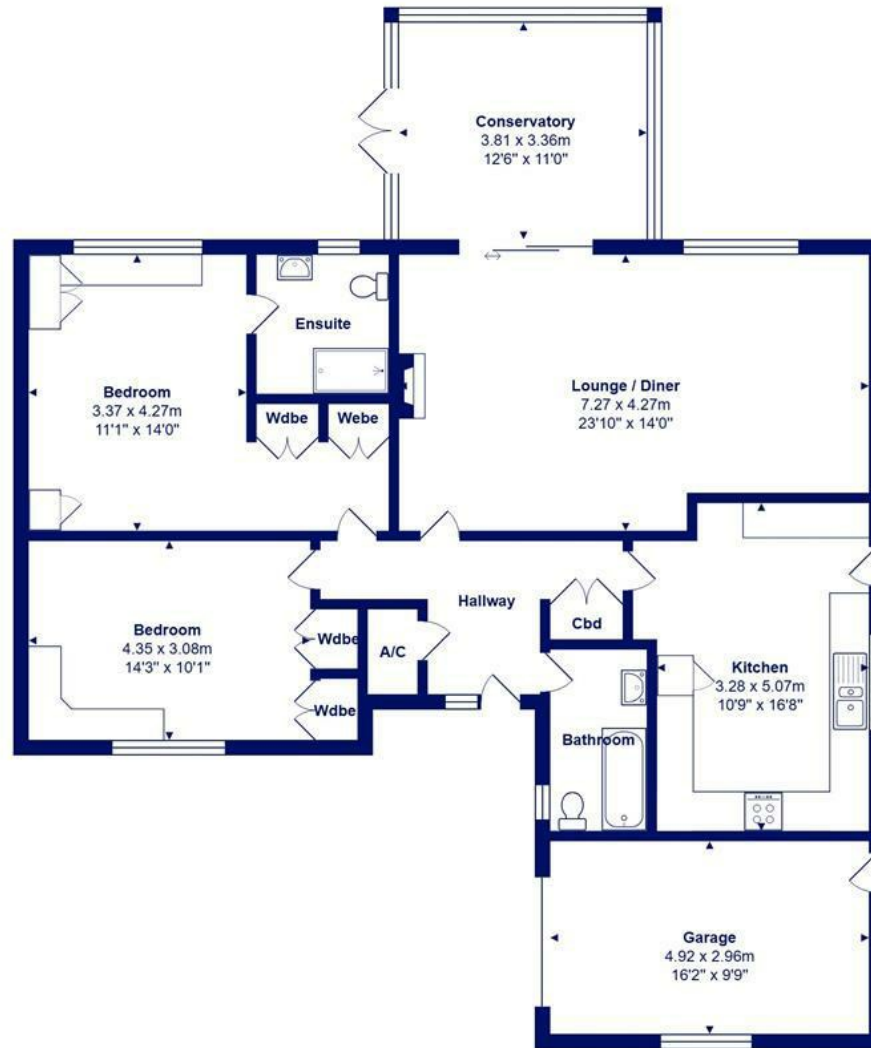
- Spacious detached bungalow with light, bright accommodation
- Two large double bedrooms with fitted wardrobes
- Two fully fitted bath/shower rooms (one en-suite)
- Large fitted kitchen with modern units
- South facing sitting/dining room with large conservatory extension
- Built-in storage cupboards in the hallway
- Attached garage and off road parking
- Lovely rear garden with excellent privacy, mainly brick built boundary walls
- Walking distance of local shops, Sainsbury's, bus connections and Friars Cliff Beach
- Council Tax 'E' £2796.19





Location



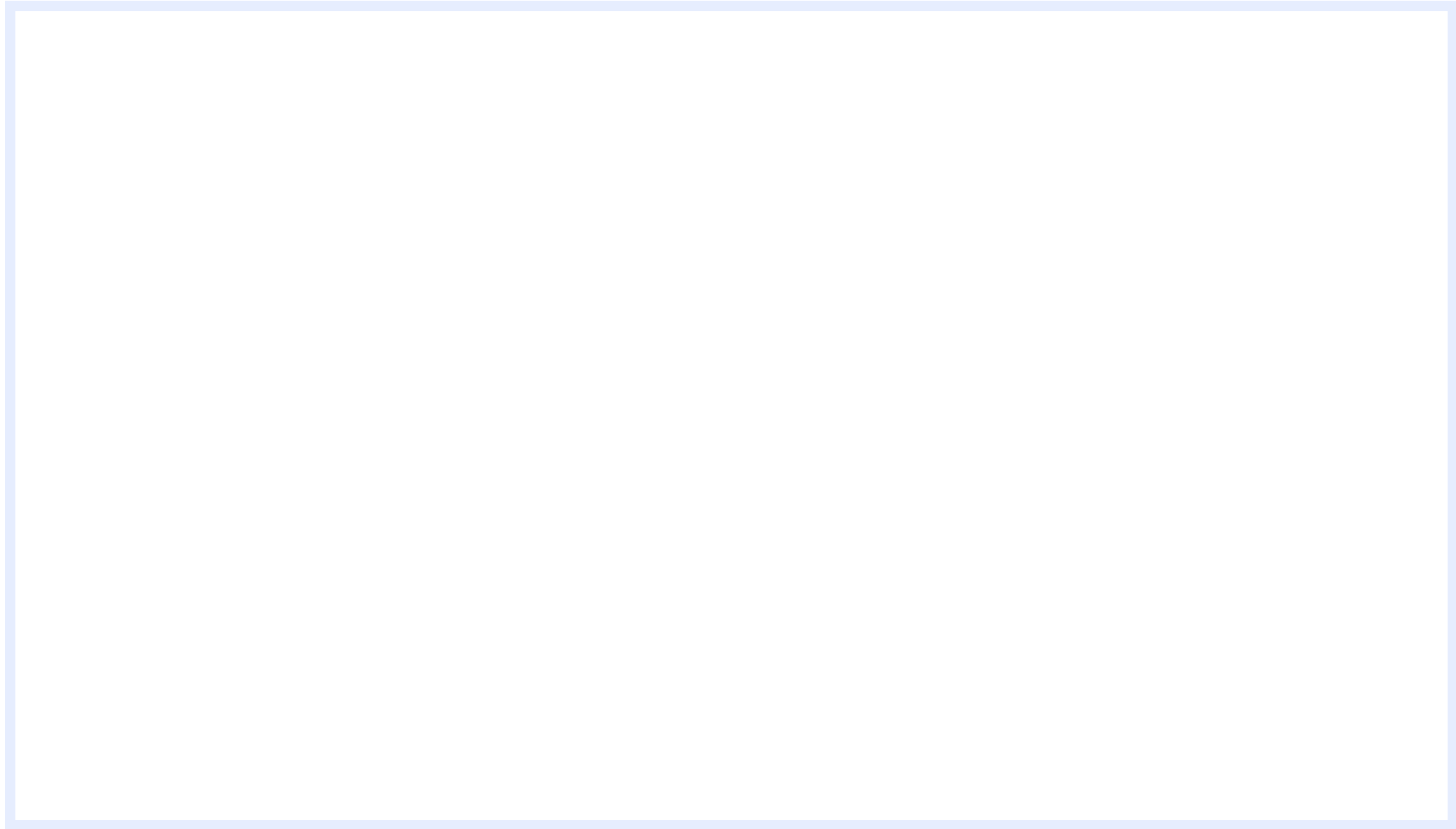


Total Area: 116.2 m² ... 1251 ft² (excluding garage)

All measurements are approximate and for display purposes only







www.mitchells.uk.com
Highcliffe@mitchells.uk.com
01425 272206

Highcliffe
284 Lymington Road
Highcliffe
Christchurch
BH23 5ET

