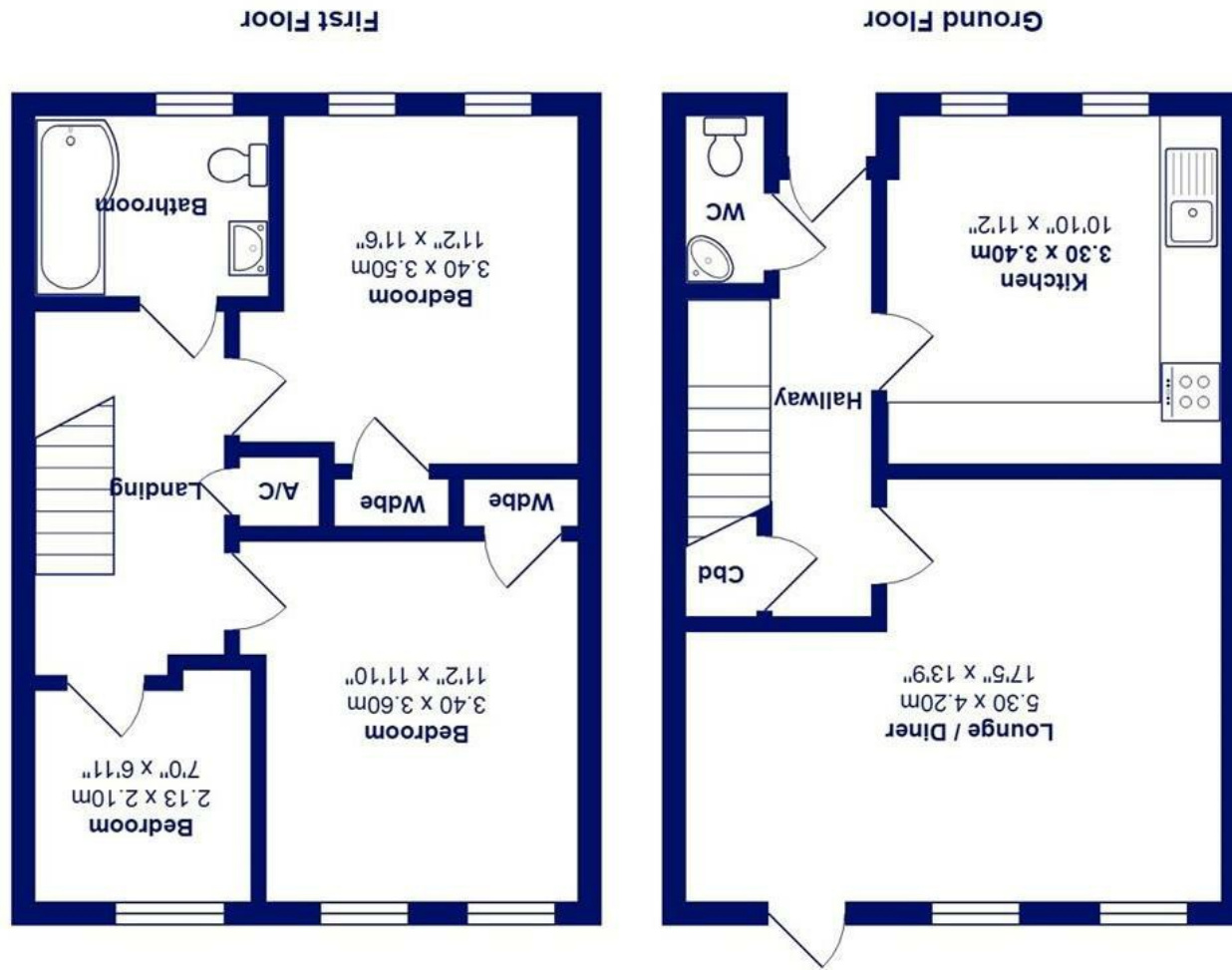




All measurements are approximate and for display purposes only

Total Area: 82.0 m² ... 882 ft²



63 Kilmington Way, Highcliffe On Sea, BH23 5BL

£360,000

Mitchells
1963 — TODAY

A extremely well presented, mid terrace mock Georgian style home of about 885sqft with allocated parking and a garage. Having been modernised by the current vendors and situated in this great location just to the north of the high street and a short stroll to the cliff top and beach.

- Mock Georgian townhouse in a lovely, quiet position close to the high street
- Three good sized first floor bedrooms
- Family bathroom
- Downstairs cloakroom
- Modern kitchen/breakfast room with some integrated appliances and a view over the gardens to the front
- Bright and airy sitting/dining room with access on to the rear garden
- Split level, courtyard garden with garage immediately behind
- Neutral décor, UPVC double glazed windows and gas fired central heating
- Allocated parking at the rear by the garage with access from the rear garden
- Very convenient location with local amenities close by, Hinton Admiral railway station about 1 mile away

EPC Rating Band: D
Council Tax Band: D
Freehold

