



*171 Lymington Road, Christchurch BH23 4JS*

*£250,000*

**Mitchells**

1963 — TODAY



## *Lymington Road, Christchurch*

A stunning two bedroom, two bath/shower room (one en-suite) ground floor apartment in this brand new development set just moments from the beach and the bustling village centre. Castle Rise enjoys distinctive architecturally styled elevations with a mix of brick, render and decorative oak and will be finished to an exacting specification inside and out.



## The Property

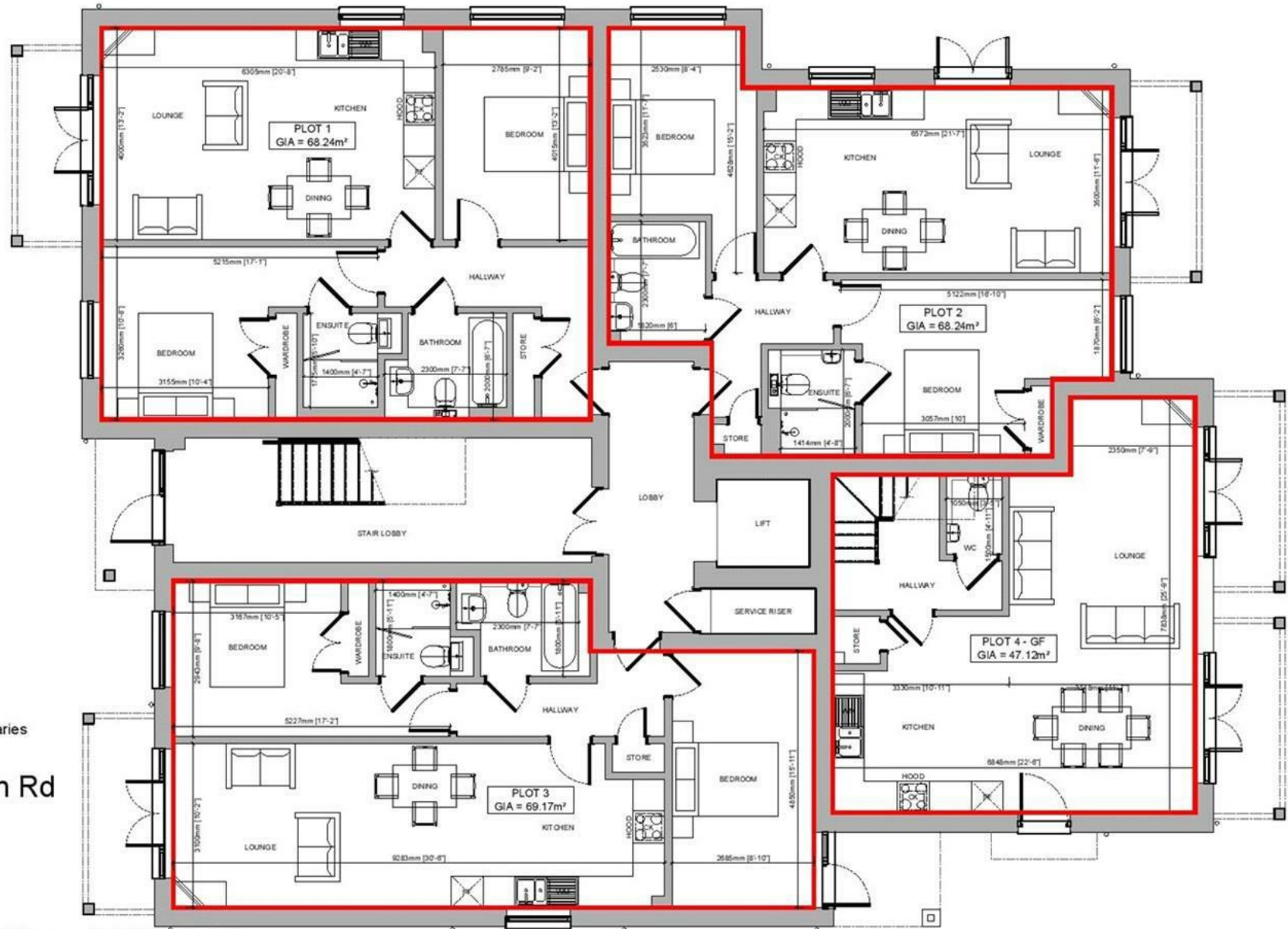
- 10 year new home warranty with all units
- Designer kitchens with quartz worktops and integrated appliances
- Lift access to all floors and impressive communal areas
- Bathrooms and ceramic tiling by Porcelanosa
- Gas fired under floor heating, UPVC double glazing
- Private parking space with 5 electric charging points
- Professionally landscaped gardens with resident's bike store
- Maintenance approx £1800 p/a
- Short stroll to bustling village, cliff top, Highcliffe Castle and the beach
- Council Tax





Location

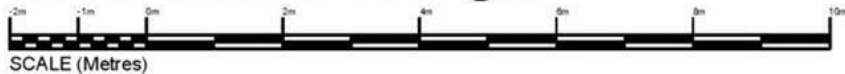


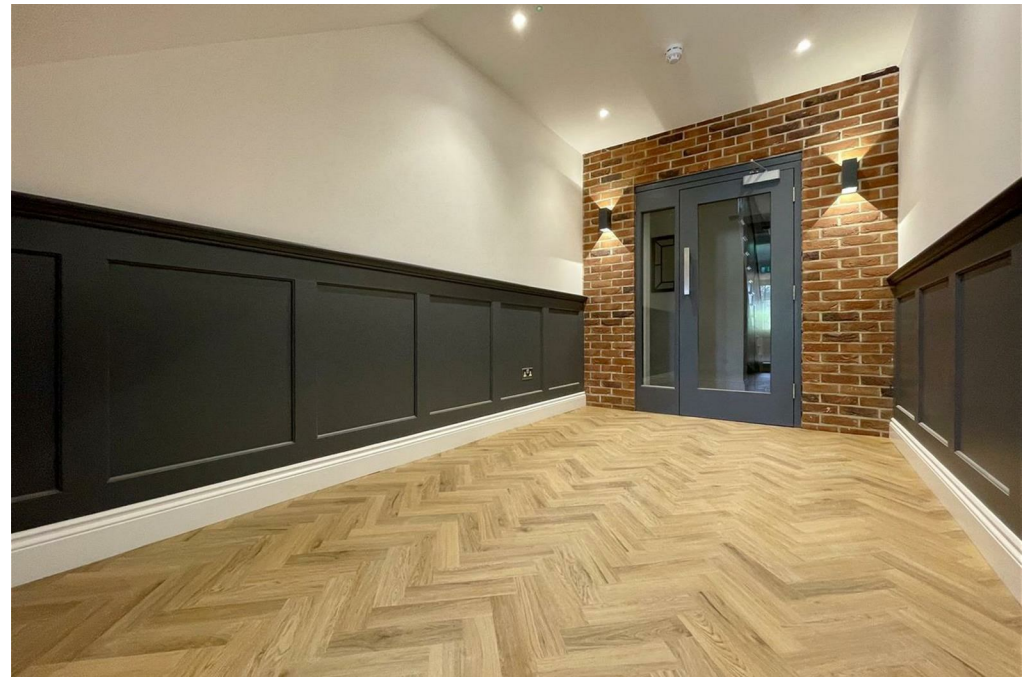


 Plot boundaries

171 Lymington Rd  
 Christchurch  
 Dorset  
 BH23 4JS

Ground Floor Plan - 1:100 @ A4







[www.mitchells.uk.com](http://www.mitchells.uk.com)  
[Highcliffe@mitchells.uk.com](mailto:Highcliffe@mitchells.uk.com)  
01425 272206

Highcliffe  
284 Lymington Road  
Highcliffe  
Christchurch  
BH23 5ET

