



*8 Greenwood Close, New Milton, BH25 6FB*

*£325,000*

**Mitchells**  
1963 — TODAY



*8 Greenwood Close  
New Milton  
Hampshire  
BH25 6FB*

A well presented two bedroom semi-detached house situated on a popular modern development, recently built by the well regarded local builders Pennyfarthing Homes. The property offers a modern kitchen, a large sitting/dining room, a ground floor WC, two double bedrooms, a family bathroom, a private rear garden, and two allocated parking spaces.

- Entrance Hall
- Ground Floor WC
- Sitting/Dining Room
- Modern Kitchen
- Family Bathroom
- Two Double Bedrooms
- Two Allocated Parking Spaces
- Private Rear Garden



## The Property

Entrance hall with a UPVC front door, tiled flooring, and stairs leading to the first floor landing.

Ground floor WC with a UPVC double glazed window, a pedestal wash hand basin, and a ladder style heated towel rail.

Modern kitchen with tiled flooring, a UPVC double glazed window, a generous range of wall and base units, a contrasting worktop, and a one and a half bowl sink unit with a mixer tap and drainer. Integrated appliances include a slimline dishwasher, a four burner gas hob with an extractor fan above, and an under counter oven, along with space and plumbing for a washing machine and a tall, freestanding fridge/freezer.

The sitting/dining room is a generous size and benefits from an understairs storage cupboard and double casement doors opening onto the rear garden.

Bedroom one is a large double room with a pleasant outlook over the rear garden and a hatch to loft space with a drop down ladder.

Bedroom two is also a double room, with a view to the front and a cupboard housing the Worcester Bosch combination boiler.

Family bathroom with tile effect flooring, part tiled walls, an extractor fan, wall hung storage, and a modern suite comprising a WC, a pedestal wash hand basin, a chrome ladder style heated towel rail, and a panel bath with a folding glass shower screen and wall mounted shower attachments.





## *Gardens & Grounds*

As you approach the property, there are two block paved parking spaces and a pathway leading to the front door and along the side of the property.

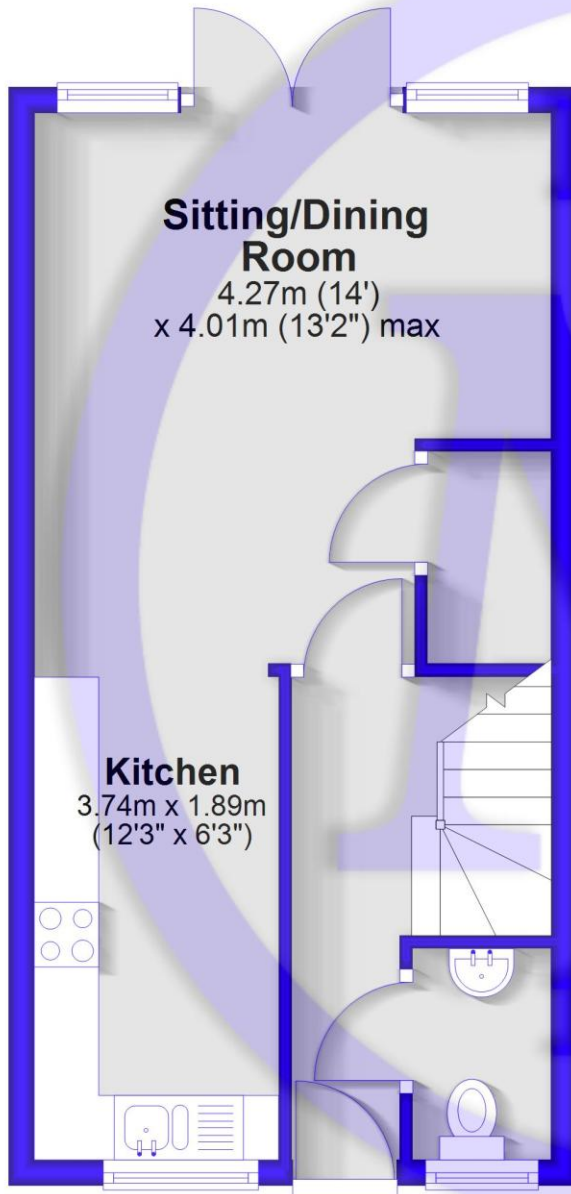
The rear garden has been well landscaped, featuring a generous area of artificial lawn and a textured paved patio adjoining the rear of the property. Closeboard fencing along the boundaries provides a good degree of privacy. There is also an area of shingle that leads to the timber garden shed, which benefits from power and lighting.

## *Services*

- Mains gas, electric, drainage and water
- Council Tax Band TBC
- Energy Performance Rating B

## Ground Floor

Approx. 32.3 sq. metres (347.3 sq. feet)

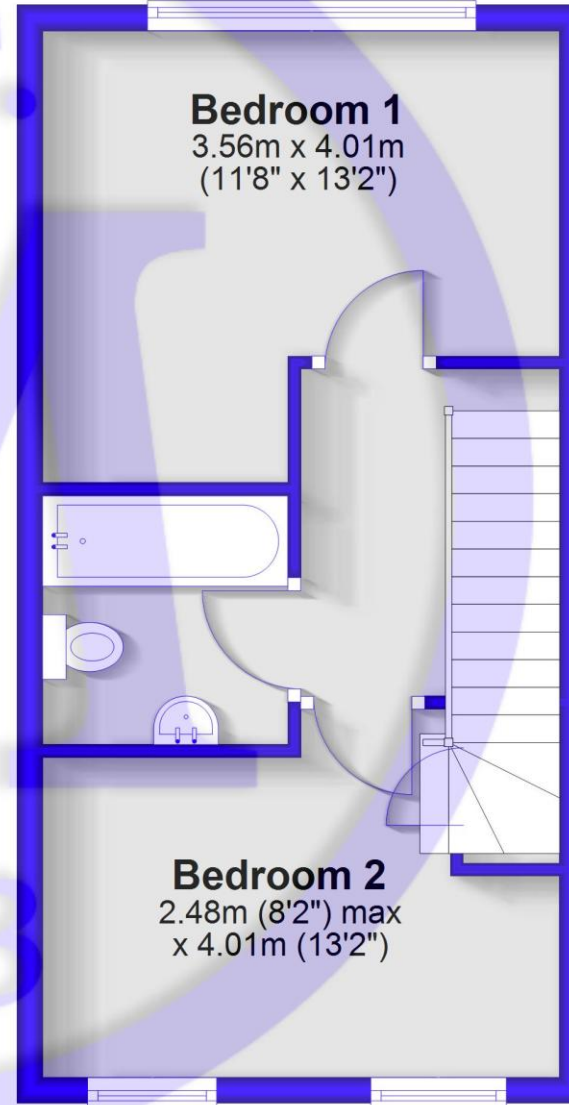


**Sitting/Dining Room**  
4.27m (14')  
x 4.01m (13'2") max

**Kitchen**  
3.74m x 1.89m  
(12'3" x 6'3")

## First Floor

Approx. 31.9 sq. metres (343.7 sq. feet)



**Bedroom 1**  
3.56m x 4.01m  
(11'8" x 13'2")

**Bedroom 2**  
2.48m (8'2") max  
x 4.01m (13'2")

Total area: approx. 64.2 sq. metres (691.1 sq. feet)

## Situation

New Milton is a thriving market town situated on the western edge of Hampshire, enjoying a prime location along a picturesque stretch of the Solent coastline. The area offers stunning views across Christchurch Bay to the Isle of Wight and is renowned for its beautiful coastal walks. With a mainline railway station providing direct access to London Waterloo in under two hours, the town is perfectly positioned for commuters and those seeking a coastal lifestyle. New Milton also boasts excellent state and private schools, a 27-hole links-style golf course, and the renowned Chewton Glen Hotel, making it an exceptionally popular destination for those looking to relocate to the coast.





[Mitchells.uk.com](http://Mitchells.uk.com)  
[info@mitchells.uk.com](mailto:info@mitchells.uk.com)  
01425 616411

Centenary Buildings  
8-10 Old Milton Road  
New Milton  
Hampshire  
BH25 6DT

**Mitchells**  
1963 — TODAY

