



*7 Beaulieu Close, New Milton, BH25 5UX*

*£209,950*

**Mitchells**  
1963 — TODAY



*7 Beaulieu Close  
New Milton  
Hampshire  
BH25 5UX*

This lovely one bedroom freehold house is situated on a popular development within walking distance of the local shop and town centre. The property offers bright, modern accommodation with features including an open plan living area, a large master bedroom, a private garden, and gas central heating.

- Kitchen
- Sitting Room
- First Floor Landing
- Master Bedroom
- Family Bathroom
- Two Allocated Parking Spaces



## The Property

The kitchen is fitted with a range of modern white wall and base units, with a contrasting timber worktop, a sink with a mixer tap and drainer, a breakfast bar, and two large UPVC windows. Built-in appliances include a four burner electric induction hob and an under counter oven. There is also space and plumbing for a tall stand up fridge/freezer and a washing machine.

This opens through to the sitting room, which has an understairs storage cupboard and a TV aerial point.

The first floor landing has a hatch to the loft space and a walk-in storage cupboard, which could double as a home office if required.

The master bedroom is a generous double room with a UPVC window, two useful storage cupboards, and enjoys an outlook to the front.

Family bathroom with tiled flooring, part tiled walls, and a white suite comprising a WC, a pedestal wash hand basin with a mixer tap, a panel bath with a mixer tap and independent thermostatic shower attachments, a glass shower screen, a UPVC window, and a chrome heated towel rail.





## *Gardens & Grounds*

To the front of the property are two allocated parking spaces and a gate providing access to the private garden.

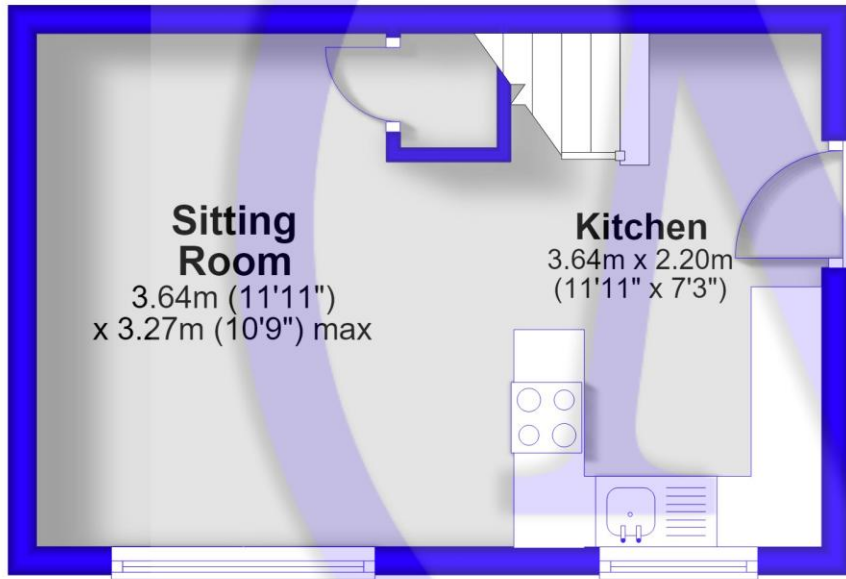
## *Services*

- Mains gas, electricity, drainage and water
- Council Tax Band: B
- Energy Performance Rating: E

EST.

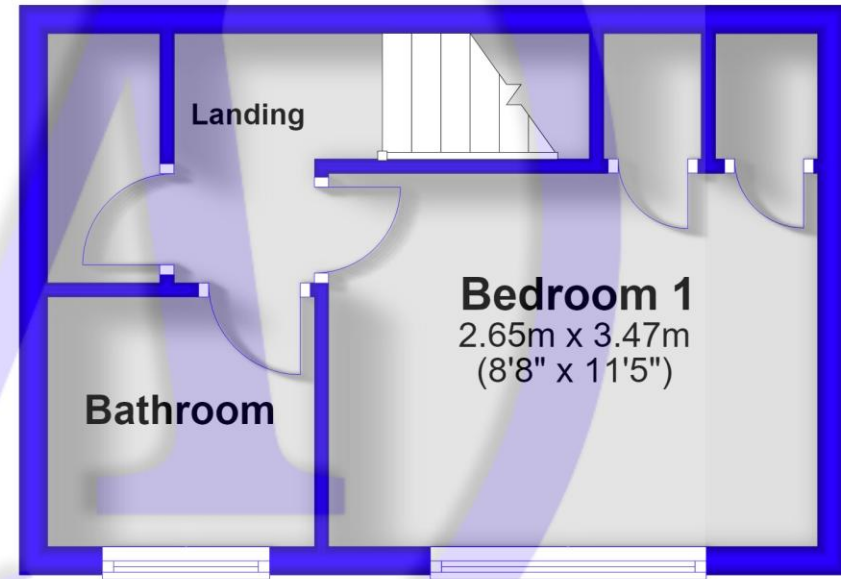
### Ground Floor

Approx. 20.4 sq. metres (219.5 sq. feet)



### First Floor

Approx. 19.9 sq. metres (213.9 sq. feet)



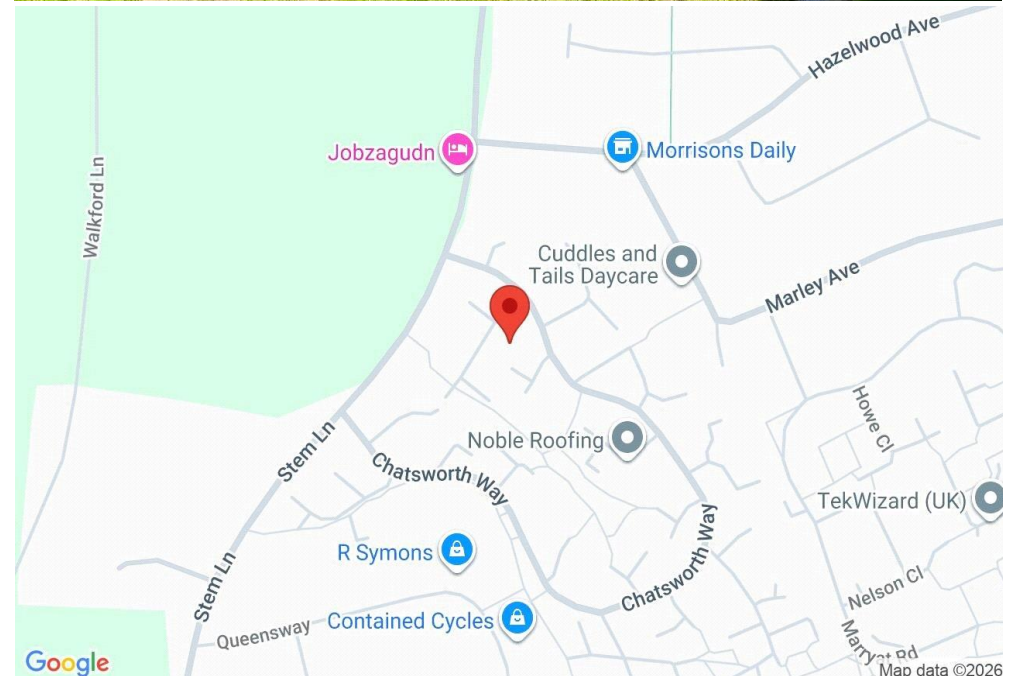
1963

Total area: approx. 40.3 sq. metres (433.4 sq. feet)



## Situation

New Milton is a lively market town on Hampshire's west edge, right by the beautiful Solent coastline. You get amazing views across Christchurch Bay all the way to the Isle of Wight, plus fantastic coastal walks. The town's mainline railway station makes London Waterloo easy to reach in under two hours, perfect for commuters or anyone wanting seaside living. New Milton has great state and private schools, a 27-hole links-style golf course, and the famous Chewton Glen Hotel, making it a top spot for those moving to the coast.





[Mitchells.uk.com](http://Mitchells.uk.com)  
[info@mitchells.uk.com](mailto:info@mitchells.uk.com)  
01425 616411

Centenary Buildings  
8-10 Old Milton Road  
New Milton  
Hampshire  
BH25 6DT

**Mitchells**  
1963 — TODAY

