



*17 Curzon Way, Highcliffe on Sea, BH23 4LG*

*£650,000*

**Mitchells**  
1963 — TODAY





# *Curzon Way, Highcliffe on Sea*

A very smart, detached bungalow of about 1140sqft that has been comprehensively refurbished and now offers stylish accommodation with a crisp, contemporary finish. It is situated in a very peaceful location with no passing traffic and is within a short walk of the footpath over Highcliffe Castle Golf Course that leads down to the beach at Friars Cliff. Quick possession is offered and the bungalow is ready to move into straight away. This lovely home features a spacious, open plan kitchen/living room leading onto the garden with a neutral décor, newly fitted carpets and refitted bathrooms. No chain

- THREE BEDROOMS • TWO BATH/SHOWER ROOMS (ONE EN-SUITE) • KITCHEN/DINER • LOUNGE • GARDENS • OFF-ROAD PARKING • GARAGE •





## The Property

- Quality detached bungalow in a very quiet, tucked away location
- Generous frontage with plenty of parking on the block paved driveway and a detached garage
- Bright and airy rooms, recently redecorated throughout
- Contemporary styled kitchen with integrated appliances, quartz worktops and wood effect flooring
- New carpets, solid internal doors and flat ceilings
- Gas central heating, UPVC double glazing, fascia's, soffits and guttering
- Attractive open outlook to the rear with a private rear garden
- About one mile to Highcliffe centre and walking distance to the beach at Friars Cliff
- Council Tax 'E' £2796.19
- EPC 'D'

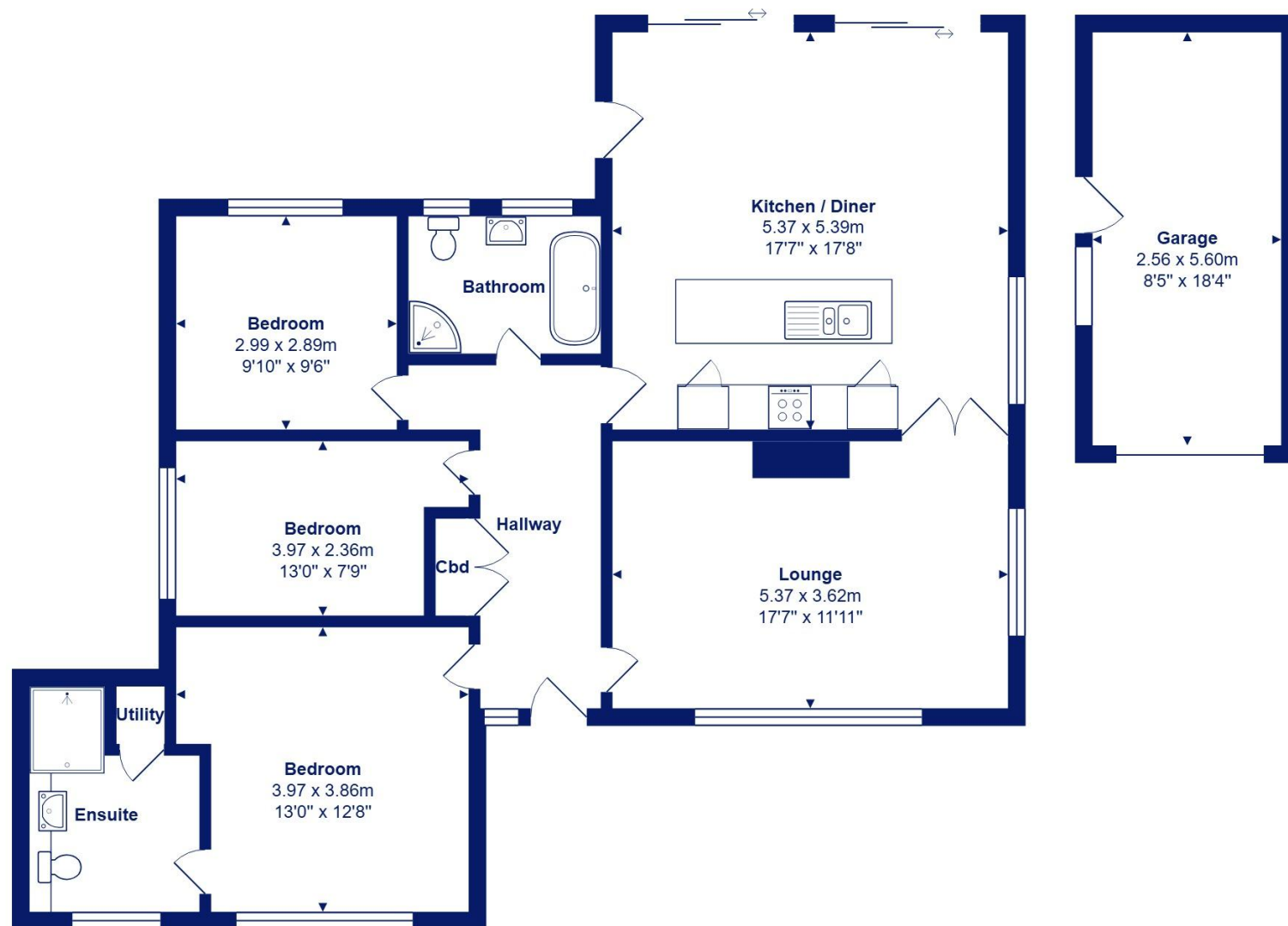




## Location

Highcliffe is a small village in the borough of Christchurch, Dorset. The village lies on a picturesque stretch of Solent coastline with views over Christchurch Bay to the Isle of Wight. Fuelled by its enviable location, coastal walks, main line railway links to London (in under two hours) excellent schools and the popularity of the Chewton Glen Hotel, the Highcliffe Golf Course and the Nature Reserve at Steamer Point, Highcliffe is a popular area for those relocating to the coast.













[mitchells.uk.com](http://mitchells.uk.com)  
[highcliffe@mitchells.uk.com](mailto:highcliffe@mitchells.uk.com)  
01425 272206

Highcliffe  
284 Lymington Road  
Highcliffe on Sea  
BH23 5ET

