



65 Woodland View, Shorefield Country Park, SO41 0LH

£79,500

Mitchells
1963 — TODAY



*65 Woodland View
Shorefield Country Park
Downton
Hampshire
SO41 0LH*

An immaculately presented two bedroom holiday home situated in a peaceful location on the popular Woodland View development at Shorefield Country Park. The holiday home benefits from two good sized bedrooms, two shower rooms, a spacious living area, a large deck, and allocated parking.

- 2026 Site Fees: £7,694.68pa
- License Until: 31/10/2042
- Carnaby Chantry Lodge 41ft x 13ft
- Open Plan Kitchen/Living Area
- Two Bedrooms
- En-Suite Shower Room
- Family Shower Room
- Large Area Of Decking



The Property

Entrance hall with a useful storage cupboard.

Kitchen/dining room with a four seater dining table and chairs, and a modern kitchen with integrated appliances, including a tall stand-up fridge/freezer, a Cookmaster range style cooker with a five burner gas hob, a dishwasher, an eye level microwave, and a washing machine.

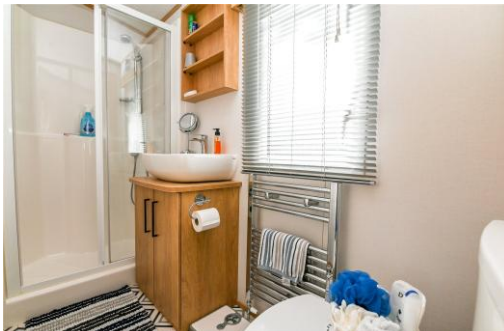
The sitting room enjoys a pleasant double aspect with fitted furniture, a corner sofa with a pull-out bed, and casement doors opening onto the wraparound decking.

Bedroom one is a generous king size room with fitted wardrobes and a door leading to the en-suite shower room with a suite comprising a WC, a wash hand basin with a mixer tap and storage beneath, a shower cubicle, an extractor fan, and a cupboard housing the Valiant central heating boiler.

Bedroom two is a twin bedroom with a built-in wardrobe.

Shower room with tile effect flooring and a suite comprising a large walk-in shower cubicle with a waterfall shower, a wash hand basin with storage beneath, a WC, and a chrome ladder style heated towel rail.





Gardens & Grounds

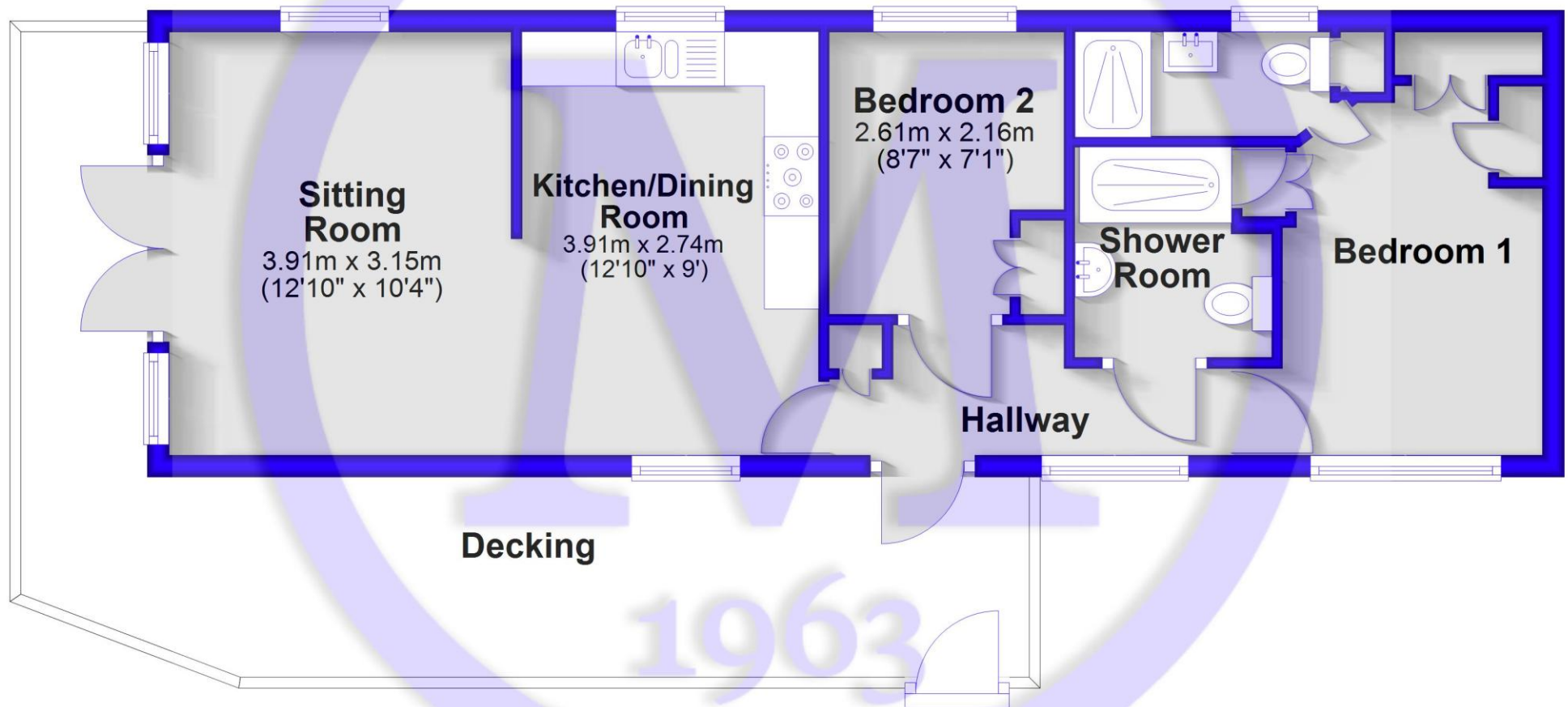
The holiday home benefits from a large wraparound deck, a storage shed, an area of fenced private lawn, and an allocated parking space.

Services

- Mains gas, electric, drainage and water
- Council Tax Band N/A
- Energy Performance Rating N/A

Floor Plan

Approx. 49.5 sq. metres (532.4 sq. feet)



Total area: approx. 49.5 sq. metres (532.4 sq. feet)

Situation

Located on the southern edge of the New Forest National Park and just a short stroll from the shingle beaches of Milford on Sea, the award-winning Shorefield Country Park offers an idyllic spot for the ultimate getaway. The park boasts a wide range of excellent facilities, including heated indoor and outdoor pools, a gym and day spa, bars, a restaurant, a fishing lake, pet-friendly areas, play areas, tennis courts, and live family entertainment.

Directions

From Mitchells, turn right at the traffic lights and proceed along Station Road. At the roundabout, turn left onto Lymington Road. Continue across the next roundabout and take the second right into Downton Lane. Take the first left into Shorefield Road, where Shorefield Country Park will be found ahead of you.





Mitchells.uk.com
info@mitchells.uk.com
01425 616411

Centenary Buildings
8-10 Old Milton Road
New Milton
Hampshire
BH25 6DT

Mitchells
1963 — TODAY

