



60a Manning Avenue, Highcliffe on Sea, BH23 4PW

£550,000

Mitchells
1963 — TODAY



Manning Avenue, Highcliffe on Sea

A stunning detached house of about 1250sqft offered for sale with the remainder of 10 year new home warranty and a superior specification. Situated in a quiet, non-estate location in Highcliffe with high end fittings, double length garage and private gardens and just a short stroll to the Comprehensive school and shops at Saulflands. This superb home has been finished to a brilliant standard with designer fittings, quality floor coverings, high end internal doors and under floor heating. Perfect for either family or retirement living. Ready for immediate occupation.

- FOUR BEDROOMS • TWO BATH/SHOWER ROOMS (ONE EN-SUITE) • KITCHEN/DINER • LOUNGE • GF WC • CLOAKROOM • DOUBLE LENGTH GARAGE • GARDENS • OFF-ROAD PARKING



The Property

- Stylish, brand new detached house ready immediately
- Four first floor bedrooms
- Two designer bath/shower rooms with quality sanitary ware and ceramic tiling
- Lovely entrance hall with tiled floor and LED spots on the staircase
- Spacious, kitchen/family room that leads onto the garden, extremely smart kitchen with large island, full appliance package and quartz worktops
- Separate lounge
- Gas fired underfloor heating to ground floor
- Double length garage with vaulted roof, off road parking and private garden
- Council Tax 'E' £2796.19
- EPC 'B'

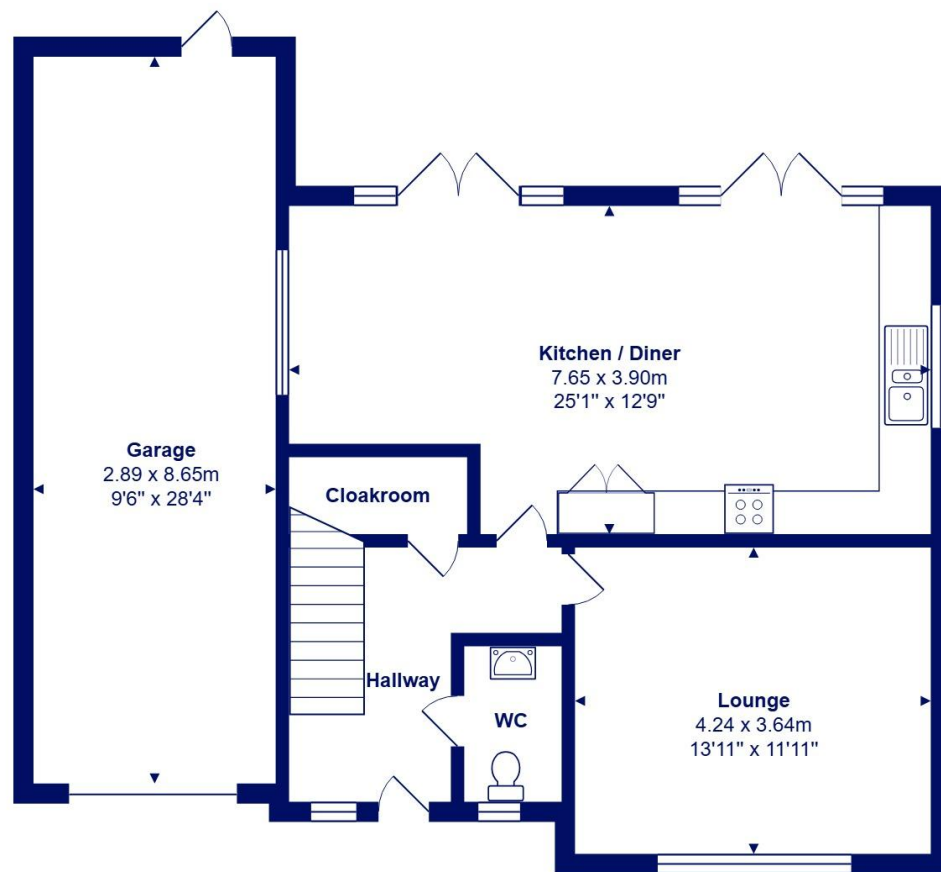




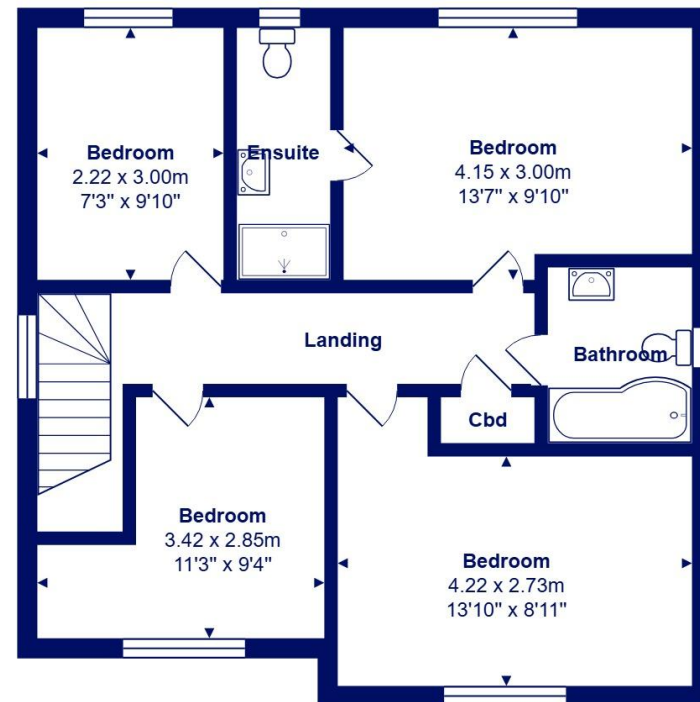
Location

Highcliffe is a small village in the borough of Christchurch, Dorset. The village lies on a picturesque stretch of Solent coastline with views over Christchurch Bay to the Isle of Wight. Fuelled by its enviable location, coastal walks, main line railway links to London (in under two hours) excellent schools and the popularity of the Chewton Glen Hotel, the Highcliffe Golf Course and the Nature Reserve at Steamer Point, Highcliffe is a popular area for those relocating to the coast.





Ground Floor



First Floor



Total Area: 115.9 m² ... 1248 ft² (excluding garage)

All measurements are approximate and for display purposes only







mitchells.uk.com
highcliffe@mitchells.uk.com
01425 272206

Highcliffe
284 Lymington Road
Highcliffe on Sea
BH23 5ET

